

SDSS_J0112+3530_MJD56574

Rest Wavelength (Å)

1500

2000

2500

3000

z = 2.325

Flux (10^{-17} ergs s^{-1} cm^{-2} Å $^{-1}$)

60

40

20

0

4000

5000

6000

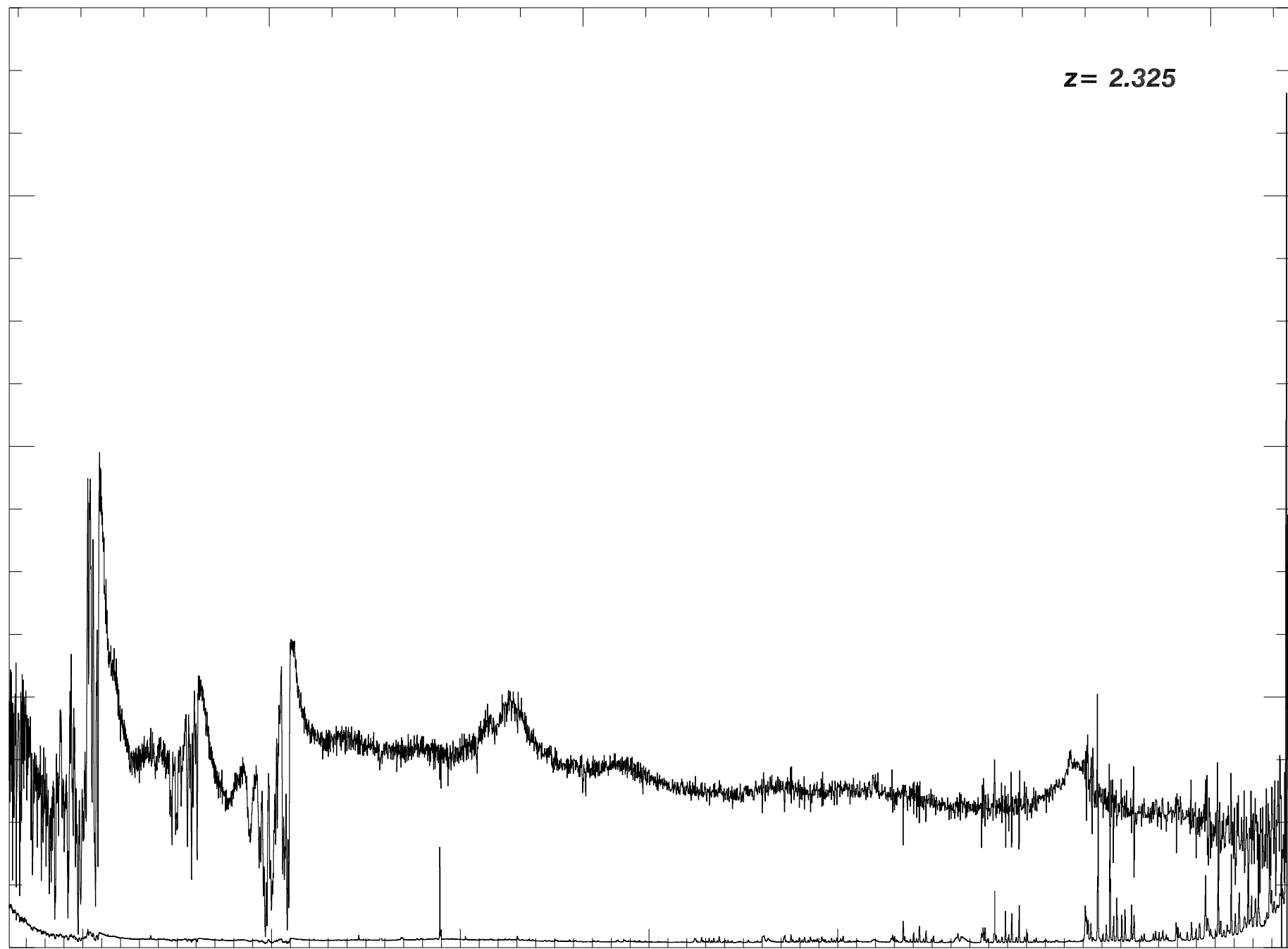
7000

8000

9000

10000

Observed Wavelength (Å)



SDSS_J0112+3530_MJD56574

Rest Wavelength (Å)

1100

1150

1200

1250

1300

Flux (10^{-17} ergs s^{-1} cm^{-2} \AA^{-1})

40

30

20

10

0

z=2.2083

z = 2.325

-2

-1

0

1

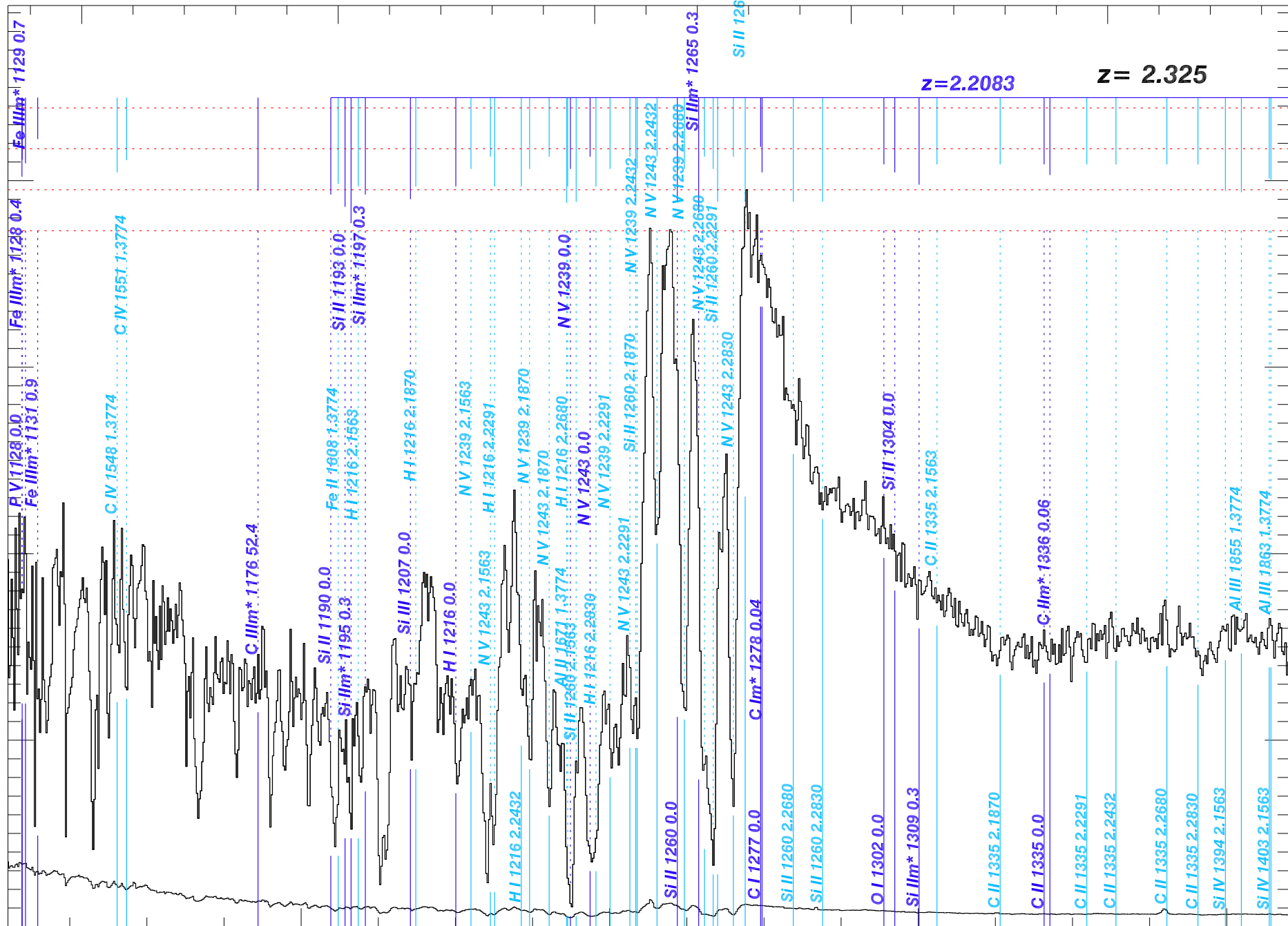
3800

4000

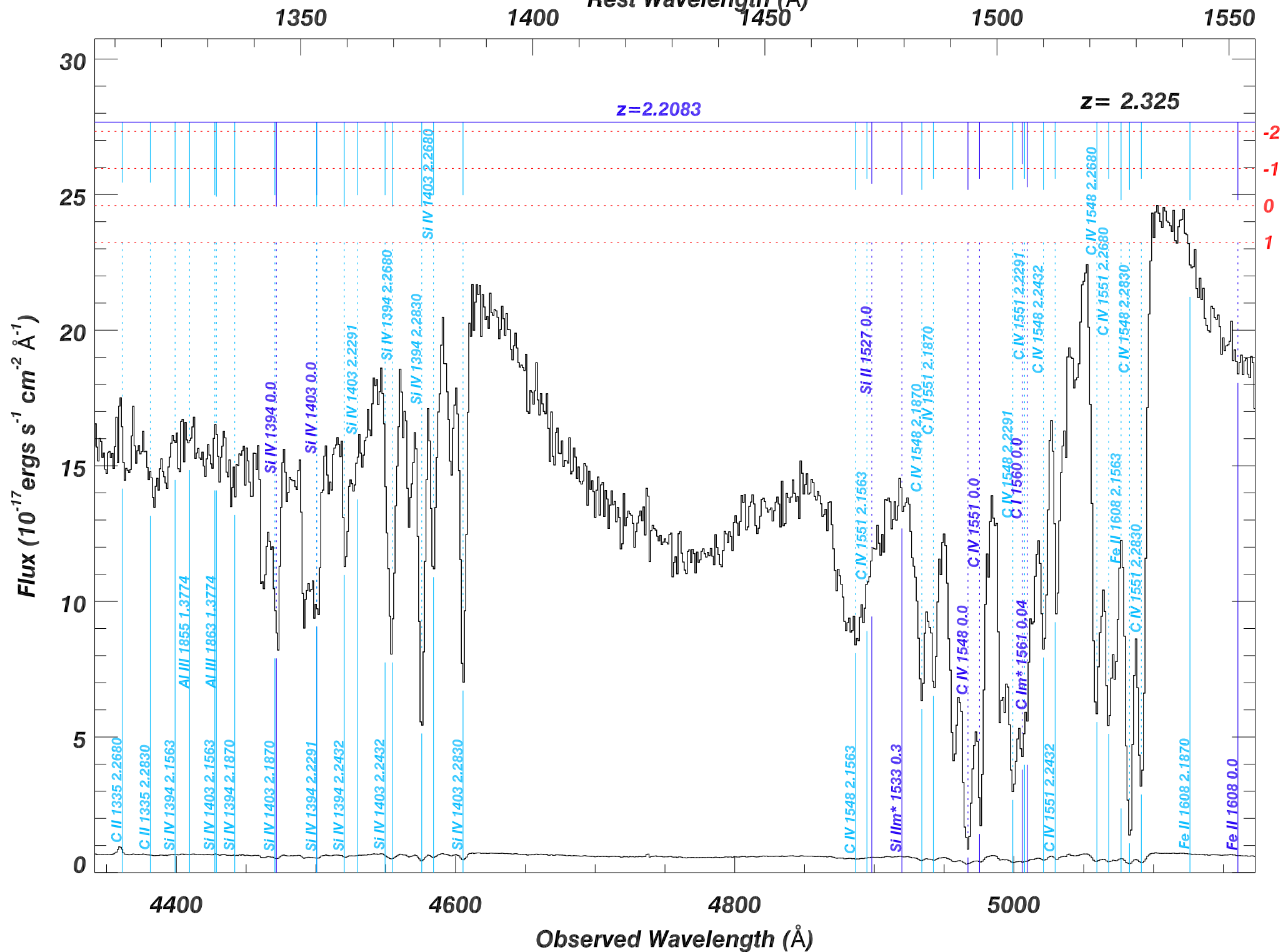
4200

4400

Observed Wavelength (Å)



SDSS_J0112+3530_MJD56574

Rest Wavelength (\AA)

SDSS_J0112+3530_MJD56574

Rest Wavelength (\AA)

1550

1600

1650

1700

1750

Flux ($10^{-17} \text{ ergs s}^{-1} \text{ cm}^{-2} \text{ \AA}^{-1}$)

30
25
20
15
10
5
0

$z=2.2065$ $z=2.325$

-2
-1
0
1

Fe II 1608 2.1870

Fe II 1608 0.0

Fe II 1608 2.2291

Fe II 1608 2.2432

Fe II 1608 2.2680

Al II 1671 2.1563

Fe II 1608 2.2830

C I 1657 0.04

Al II 1671 2.1870

Al II 1671 0.0

Al III 1671 2.2291

Al III 1671 2.2432

Al III 1671 2.2680

Al III 1671 2.2830

Fe II 2344 1.3774

Fe II 2374 1.3774

Fe II 2383 1.3774

Al I 1766 0.0

Al I m* 1766 0.1

Al III 1855 2.1563

Al III 1863 2.1563

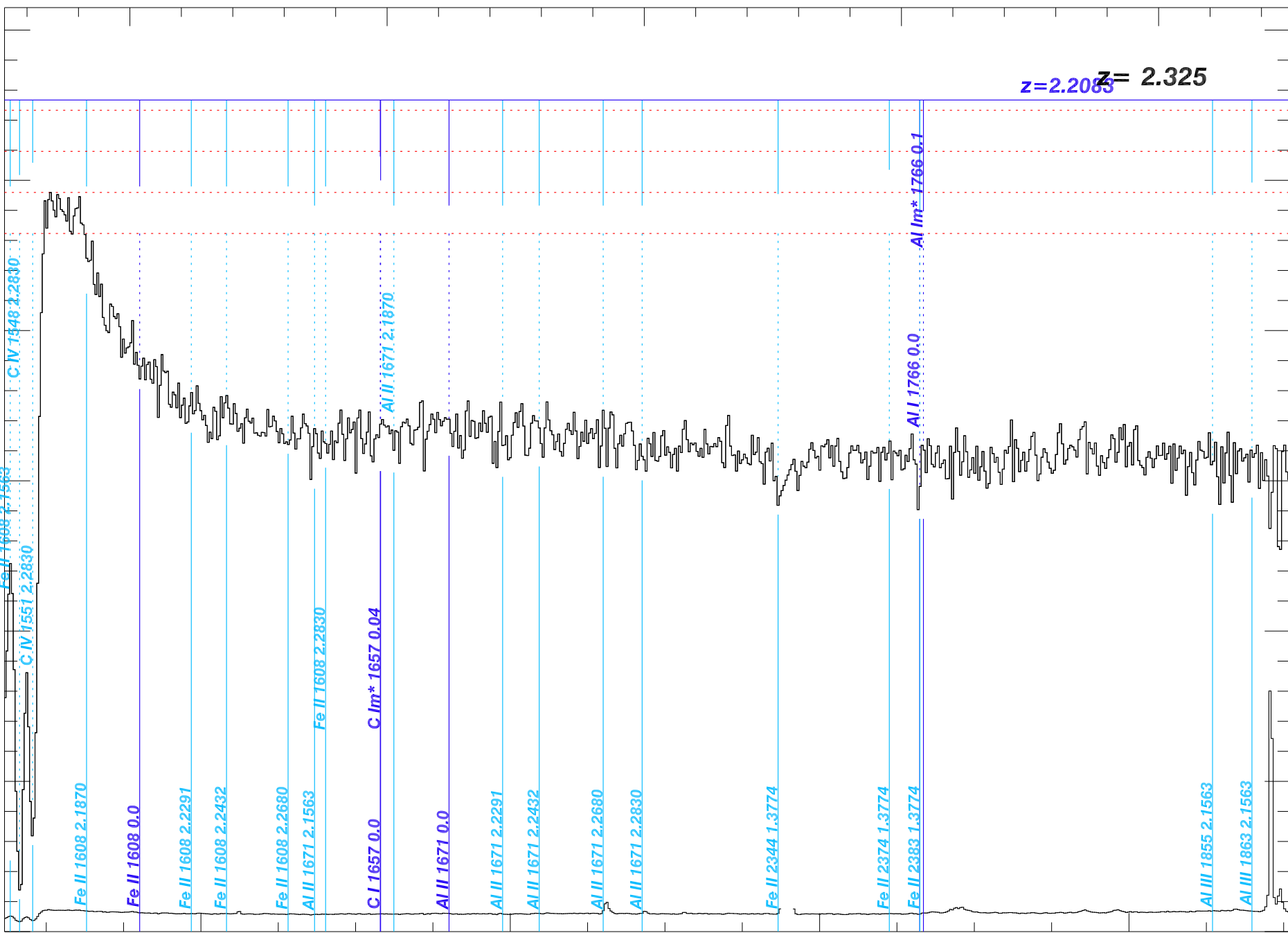
5200

5400

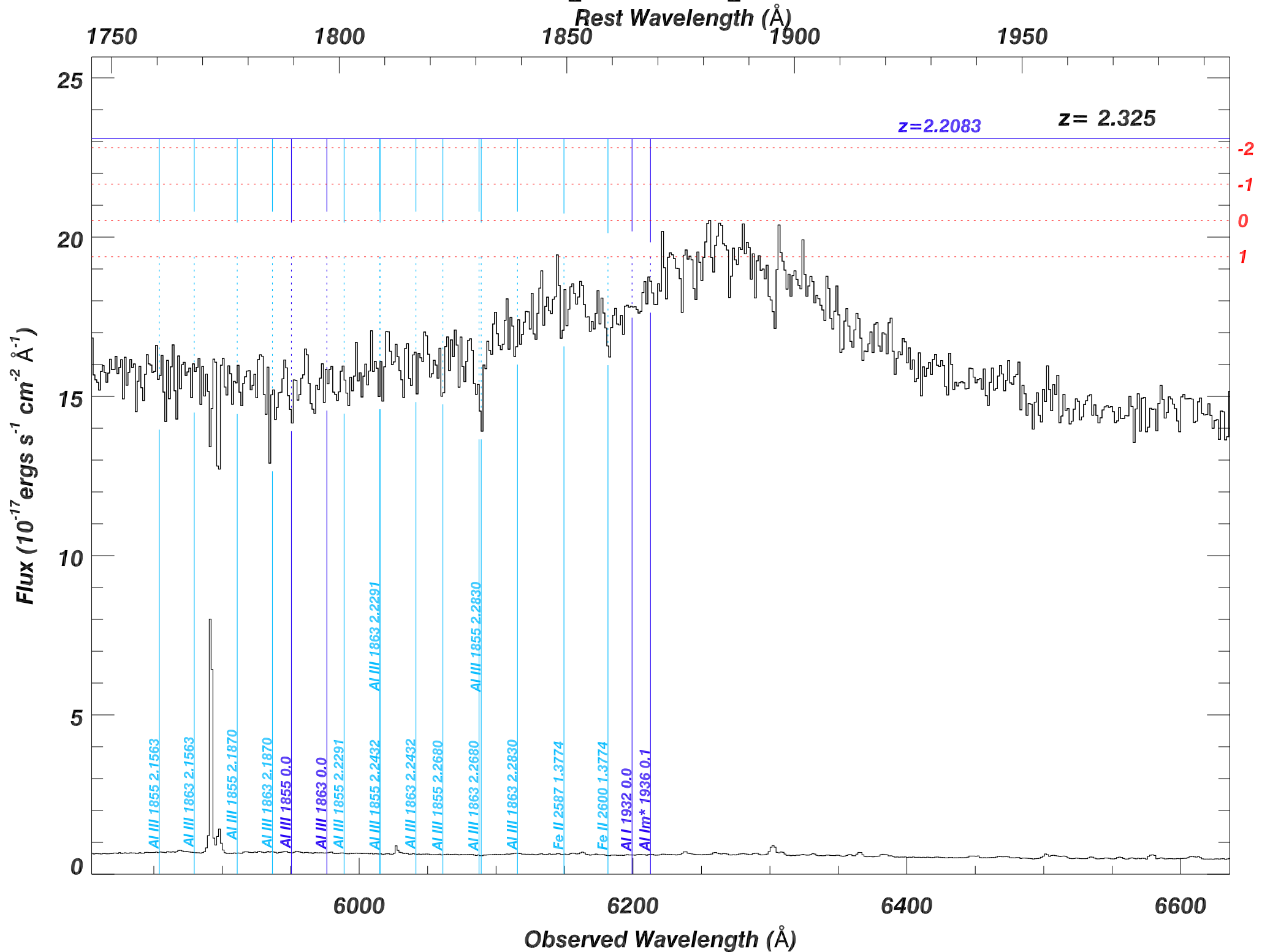
5600

5800

Observed Wavelength (\AA)



SDSS_J0112+3530_MJD56574



SDSS_J0112+3530_MJD56574

Rest Wavelength (\AA)

2000

2050

2100

2150

2200

$z=2.2083$

$z=2.325$

-2

-1

0

1

15

10

5

0

Flux ($10^{-17} \text{ ergs s}^{-1} \text{ cm}^{-2} \text{ \AA}^{-1}$)

6600

6800

7000

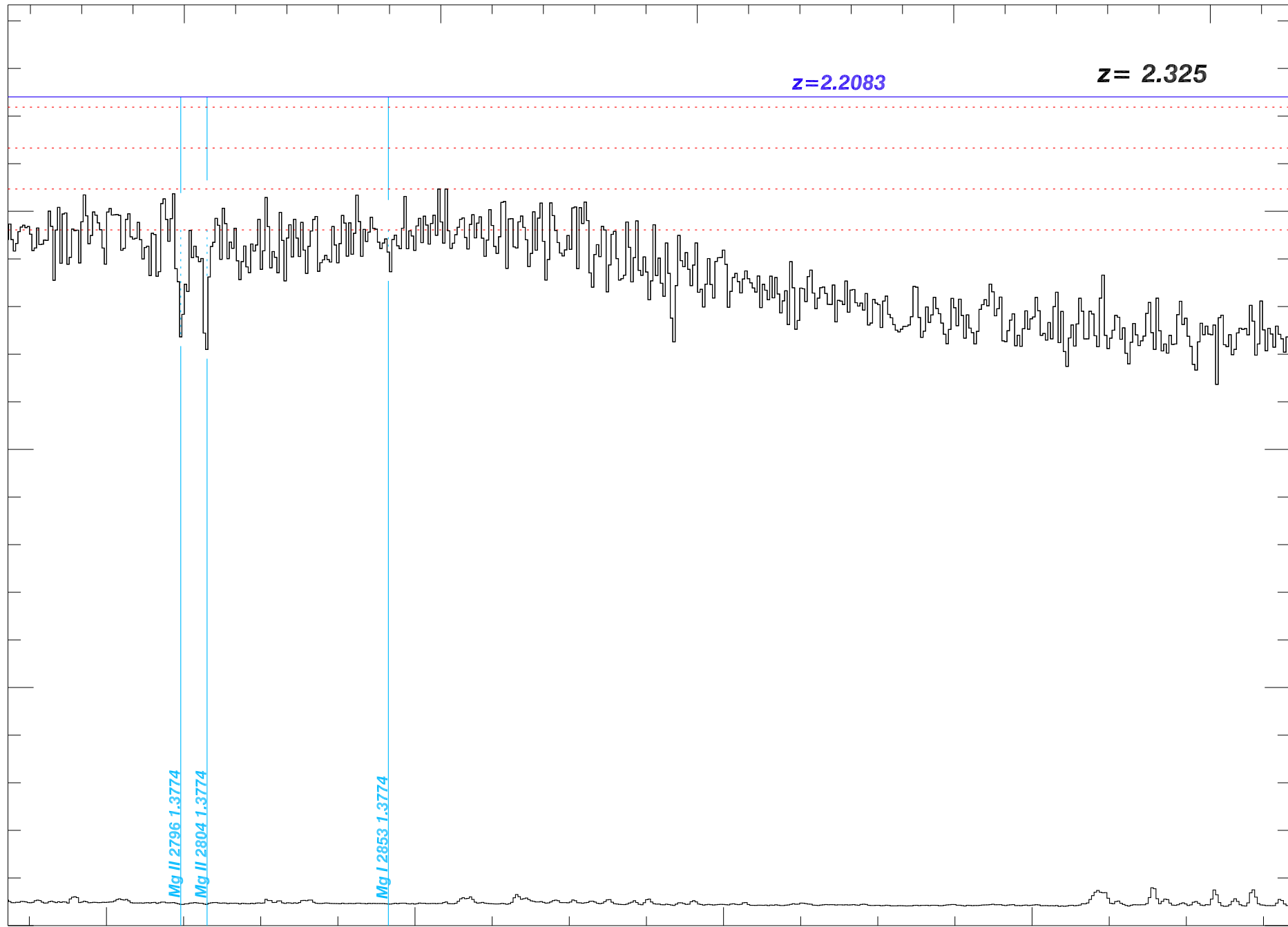
7200

Observed Wavelength (\AA)

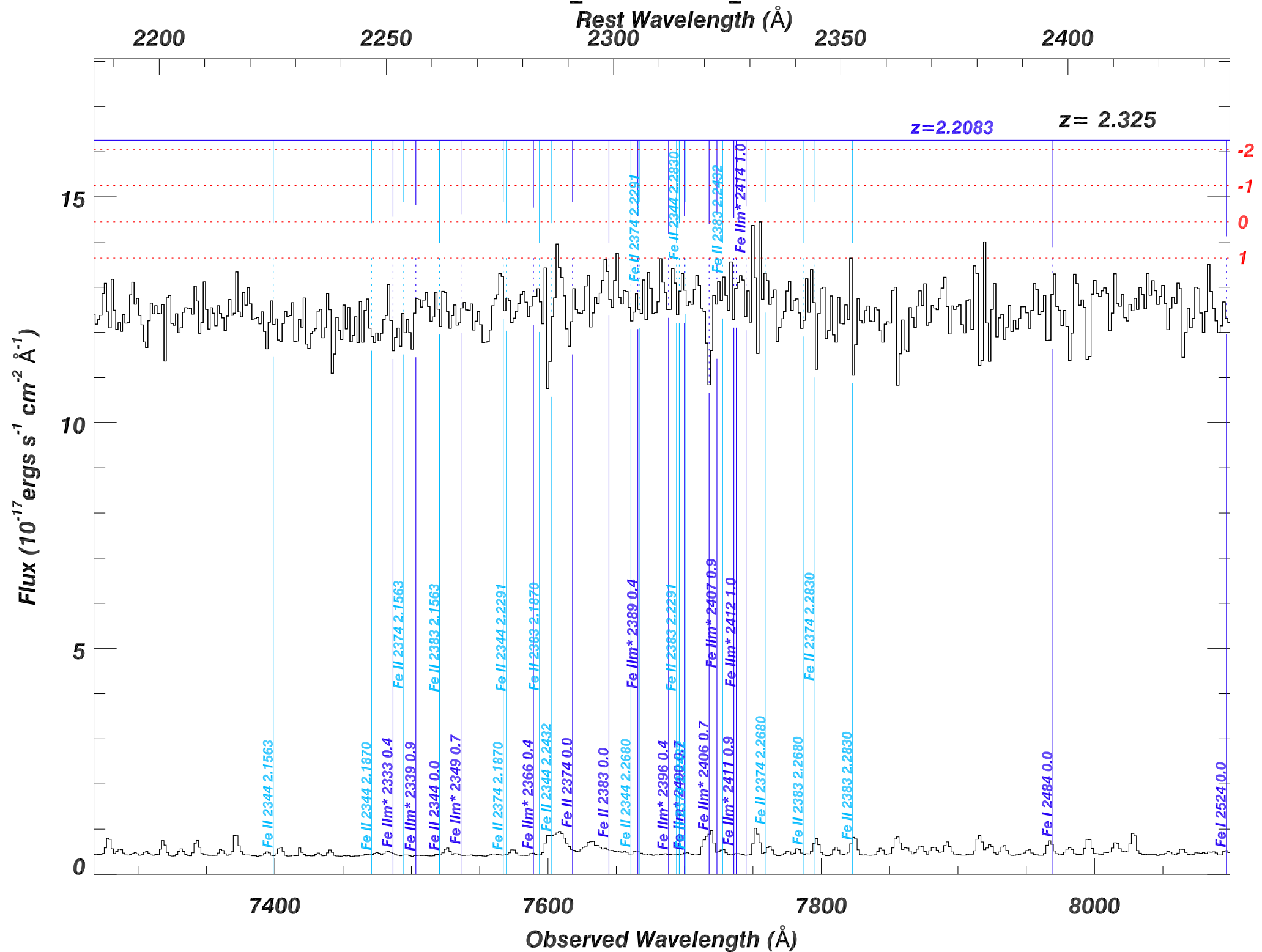
Mg II 2796 1.3774

Mg II 2804 1.3774

Mg I 2853 1.3774



SDSS_J0112+3530_MJD56574



SDSS_J0112+3530_MJD56574

Rest Wavelength (Å)

2450

2500

2550

2600

2650

$z=2.2085$ $z=2.325$

Flux (10^{-17} ergs s^{-1} cm^{-2} \AA^{-1})

15

10

5

0

-2

-1

0

1

8000

8200

8400

8600

8800

Observed Wavelength (Å)

Fe I 2524 0.0

Fe II 2587 2.1563

Fe II 2600 2.1563

Fe II 2587 2.1870

Mn II 2577 0.0

Fe II 2600 2.1870

Fe II 2587 0.0

Mn II 2594 0.0

Fe III* 2599 0.4

Fe II 2587 2.2291

Mn II 2606 0.0

Fe III* 2608 0.7

Fe III* 2613 0.4

Fe II 2600 2.2291

Fe III* 2615 0.9

Fe III* 2626 0.4

Fe III* 2632 0.7

Fe II 2600 2.2432

Fe II 2587 2.2680

Fe III* 2629 1.0

Fe II 2587 2.2680

Fe II 2600 2.2680

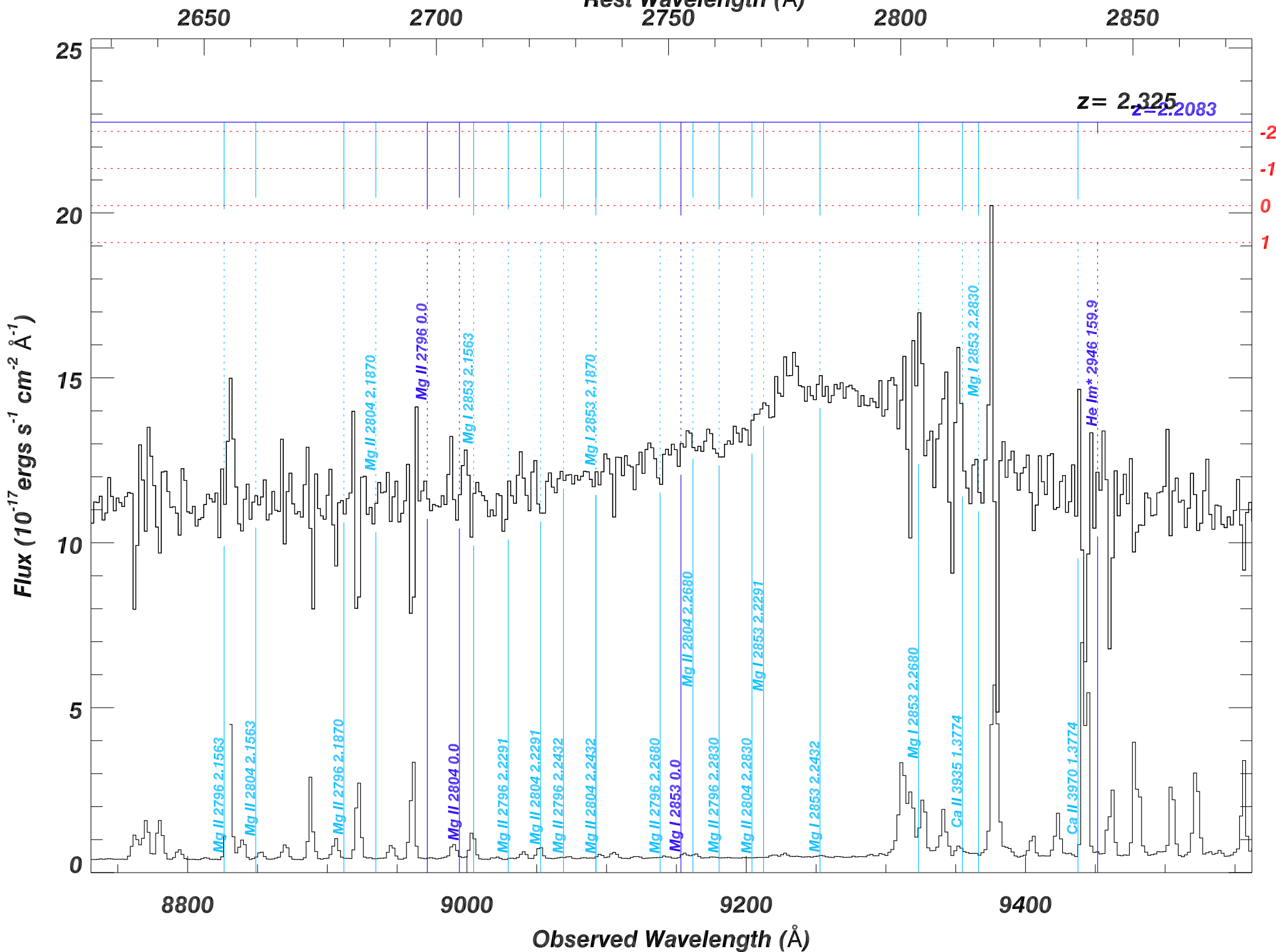
Fe II 2587 2.2830

Fe II 2600 2.2830

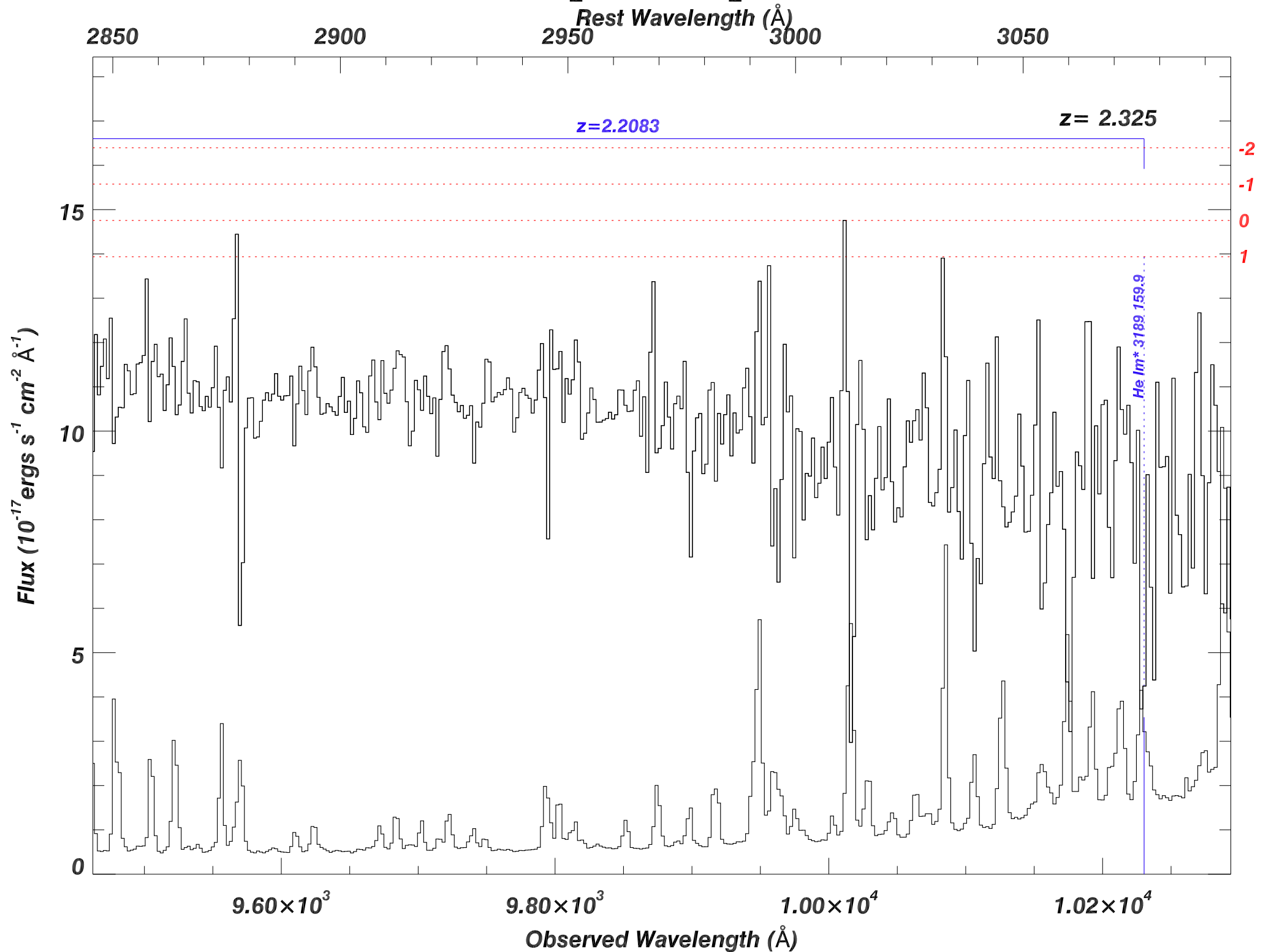
Mg II 2796 2.1563

SDSS_J0112+3530_MJD56574

Rest Wavelength (\AA)



SDSS_J0112+3530_MJD56574



SDSS_J0112+3530_MJD56574

Rest Wavelength (Å)

3100

3200

3300

3400

80
z = 2.2083

z = 2.325

-2
-1
0
1

Flux (10⁻¹⁷ ergs s⁻¹ cm⁻² Å⁻¹)

60
40
20
0

*He I m** 3189.159.9

1.02 × 10⁴ 1.04 × 10⁴ 1.06 × 10⁴ 1.08 × 10⁴ 1.10 × 10⁴ 1.12 × 10⁴ 1.14 × 10⁴

Observed Wavelength (Å)

