

SDSS_J0947+4538_MJD55957

Rest Wavelength (\AA)

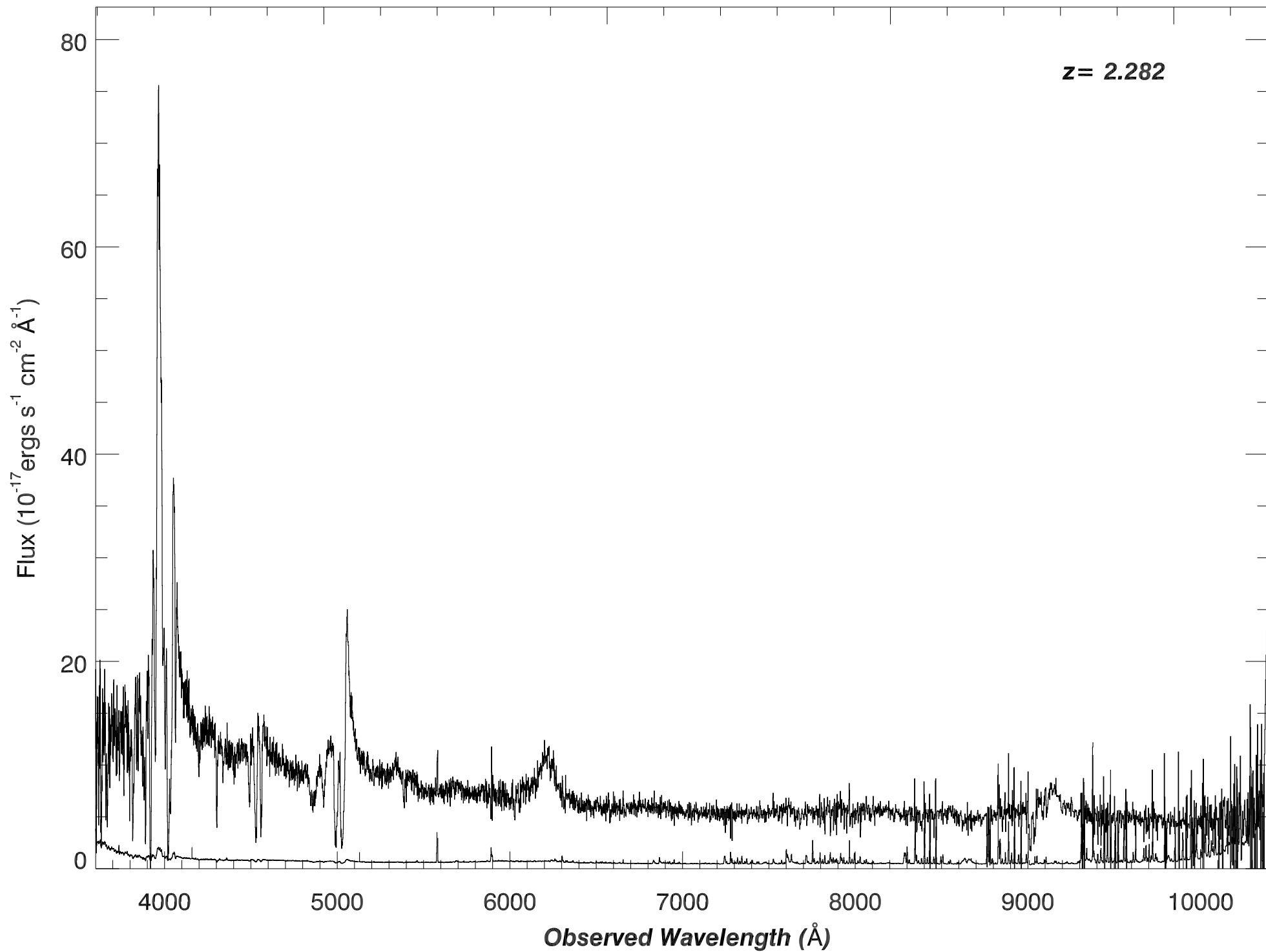
1500

2000

2500

3000

$z = 2.282$



SDSS_J0947+4538_MJD55957

Rest Wavelength (Å)

1100

1150

1200

1250

1300

$z=2.2495$
 $z=2.282$

Flux (10^{-17} ergs s^{-1} cm^{-2} Å $^{-1}$)

80

60

40

20

0

-2
-1
0
1

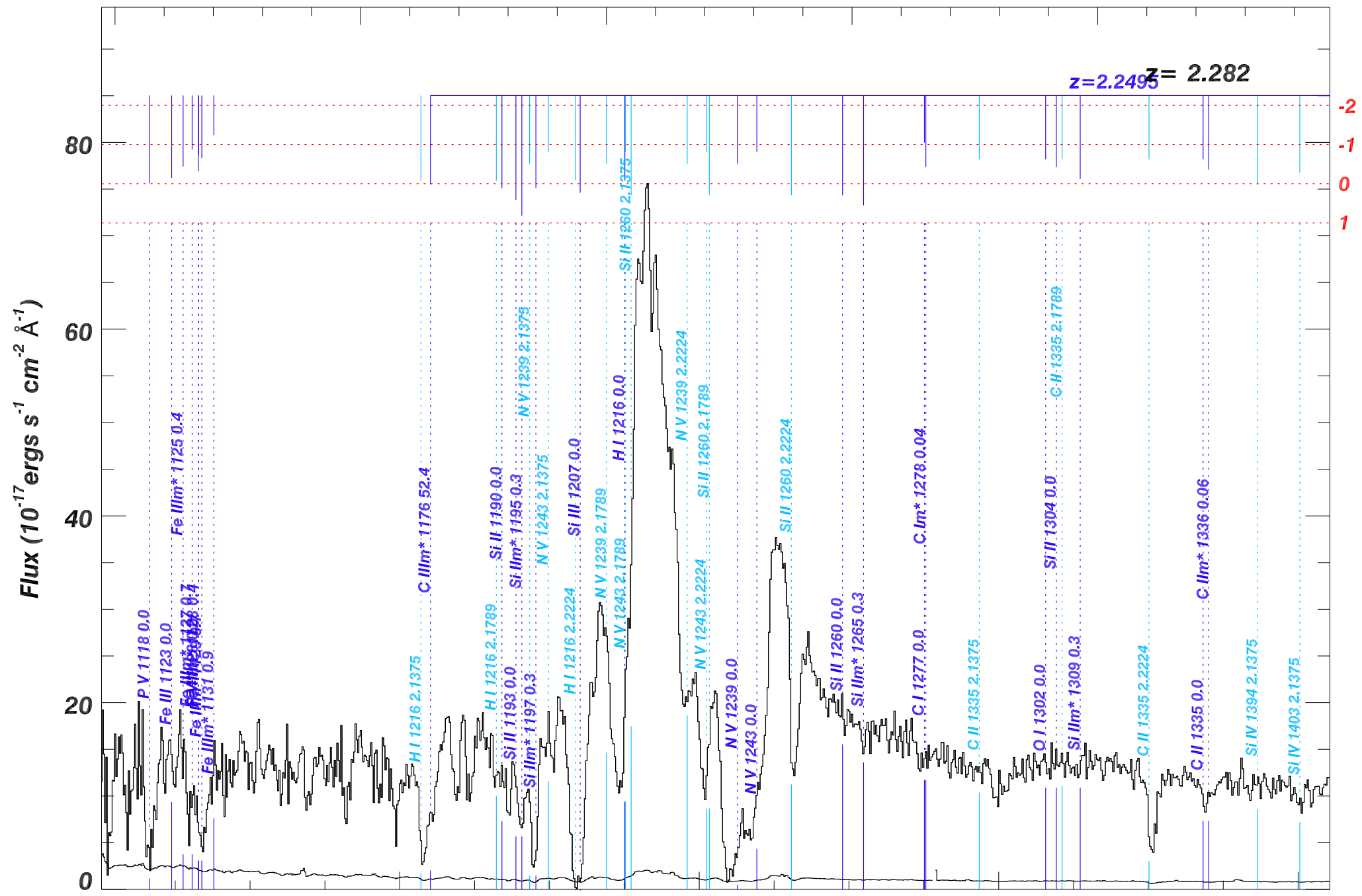
3800

4000

4200

4400

Observed Wavelength (Å)



SDSS_J0947+4538_MJD55957

Rest Wavelength (\AA)

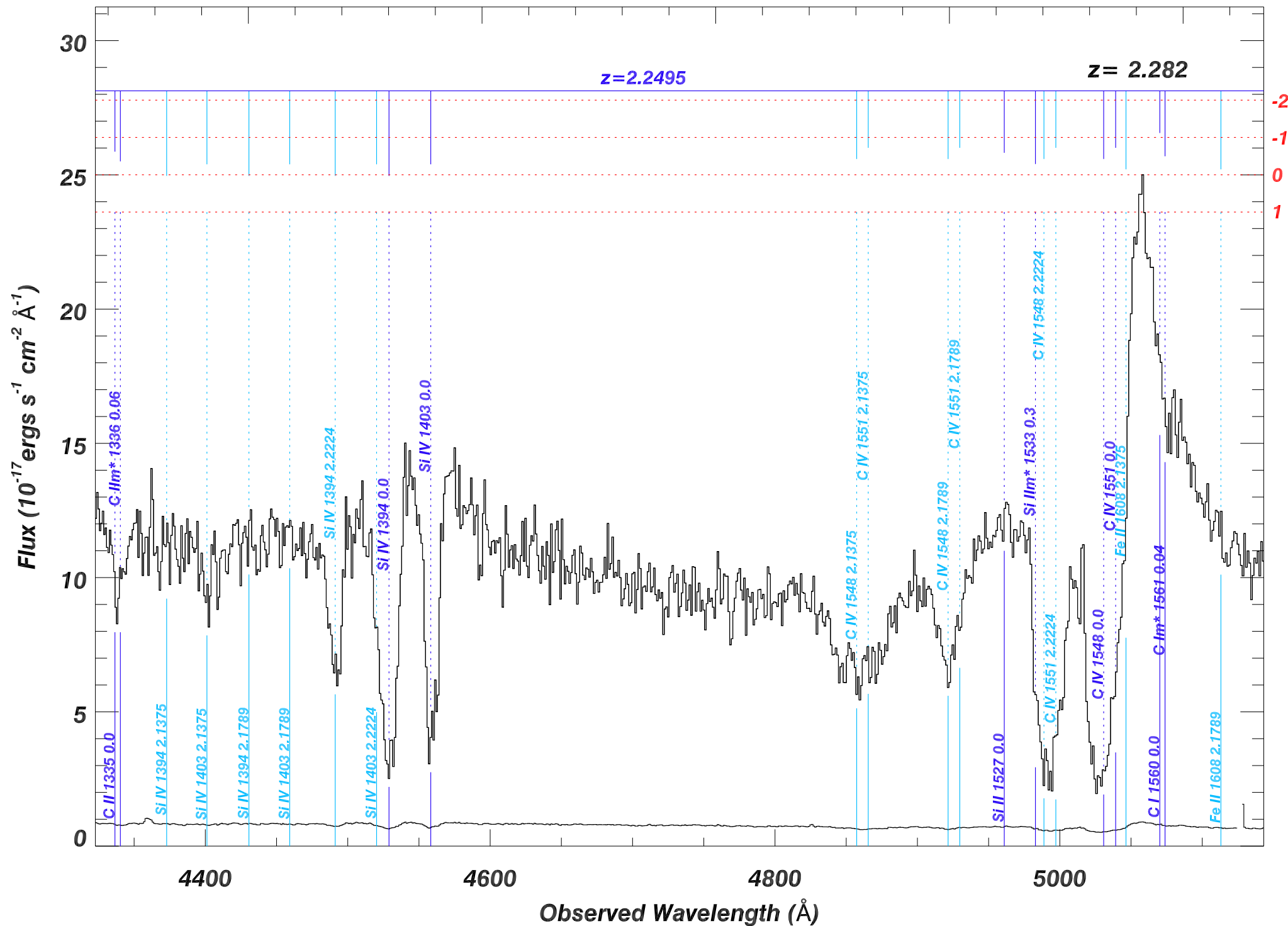
1350

1400

1450

1500

1550



SDSS_J0947+4538_MJD55957

Rest Wavelength (\AA)

1550

1600

1650

1700

1750

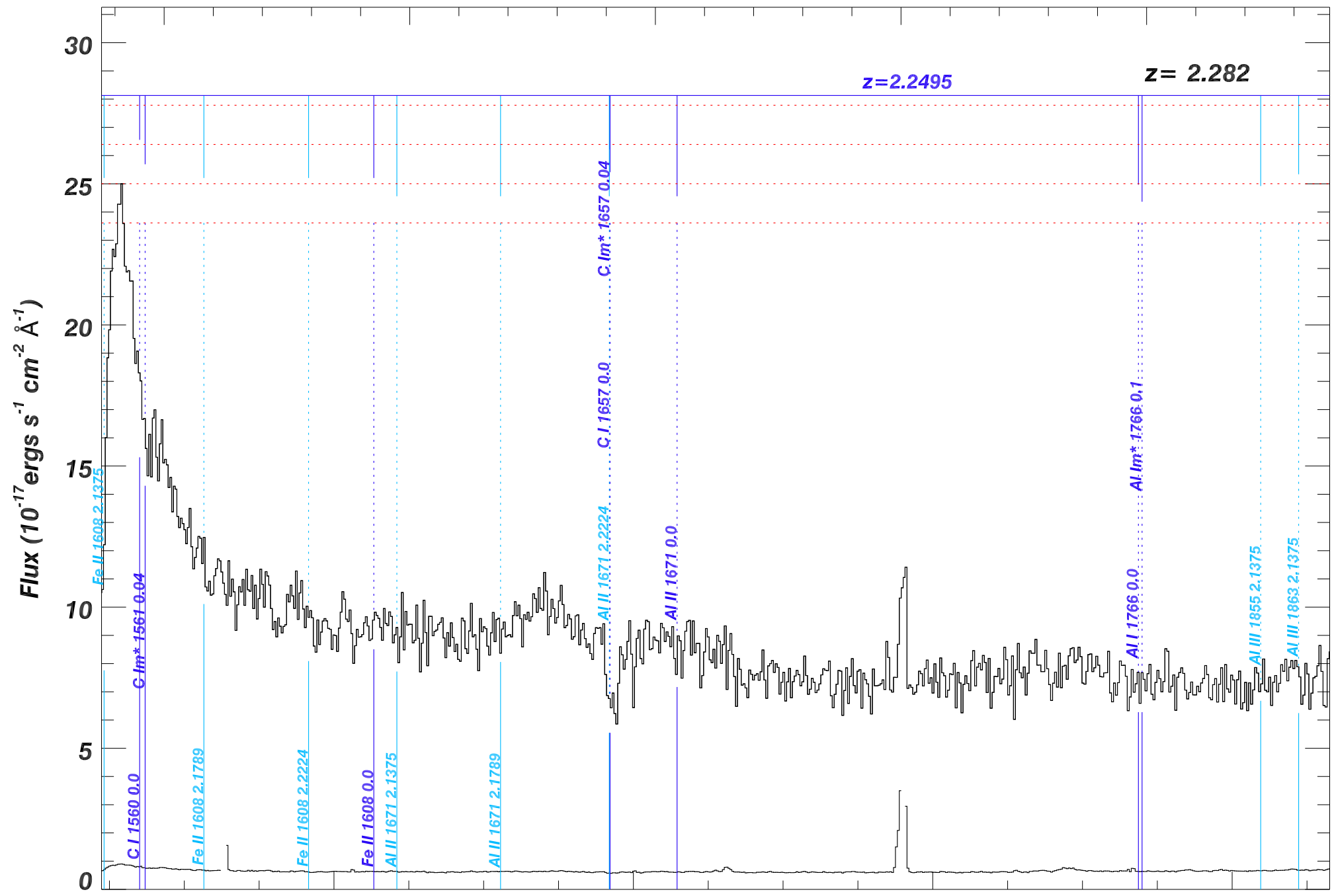
Flux ($10^{-17} \text{ ergs s}^{-1} \text{ cm}^{-2} \text{ \AA}^{-1}$)

30
25
20
15
10
5
0

$z=2.2495$

$z=2.282$

-2
-1
0
1



5200

5400

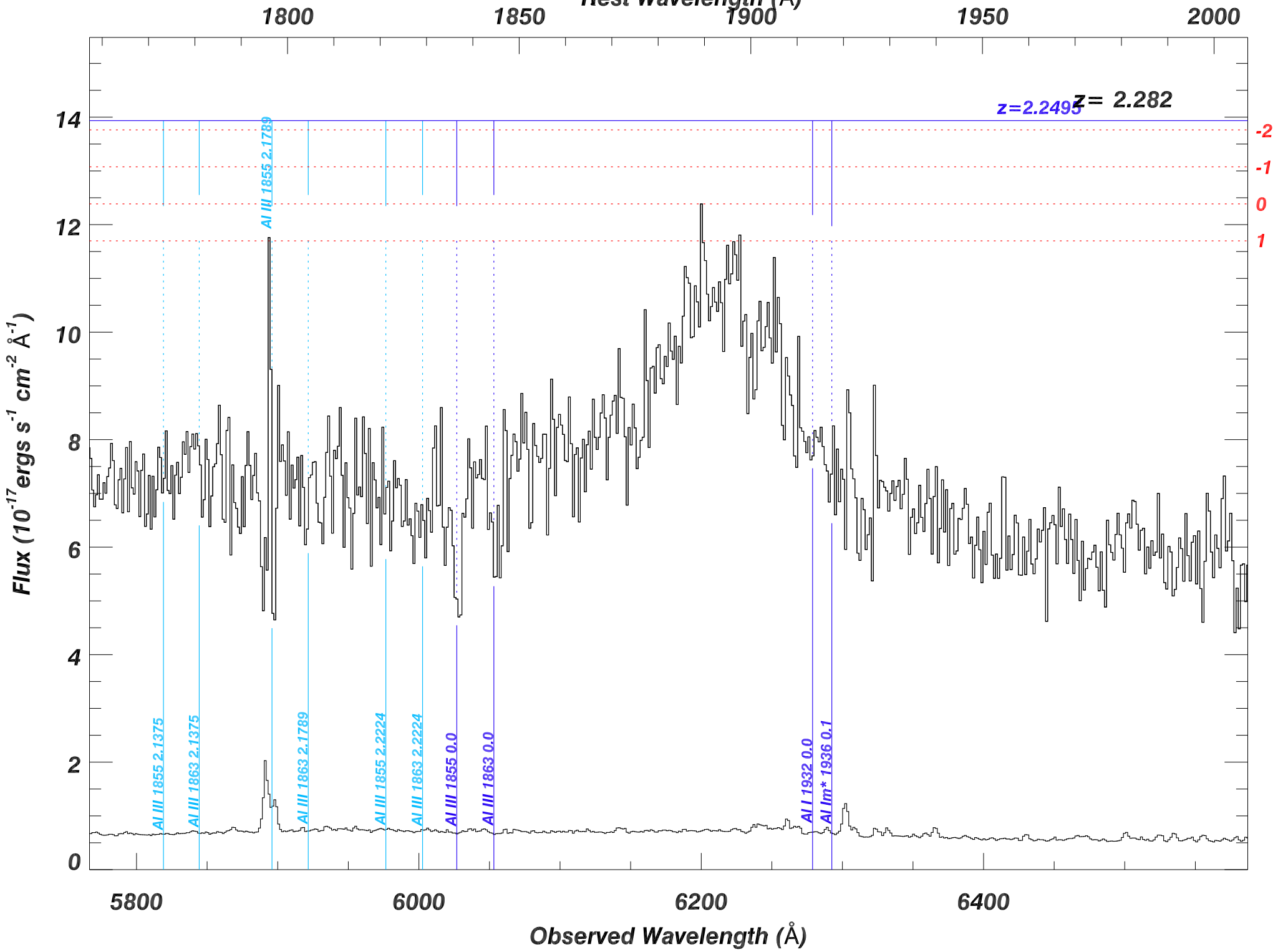
5600

5800

Observed Wavelength (\AA)

SDSS_J0947+4538_MJD55957

Rest Wavelength (\AA)



SDSS_J0947+4538_MJD55957

Rest Wavelength (Å)

2000

2050

2100

2150

2200

z = 2.282

-2
-1
0
1

Flux (10^{-17} ergs s^{-1} cm^{-2} Å^{-1})

8

6

4

2

0

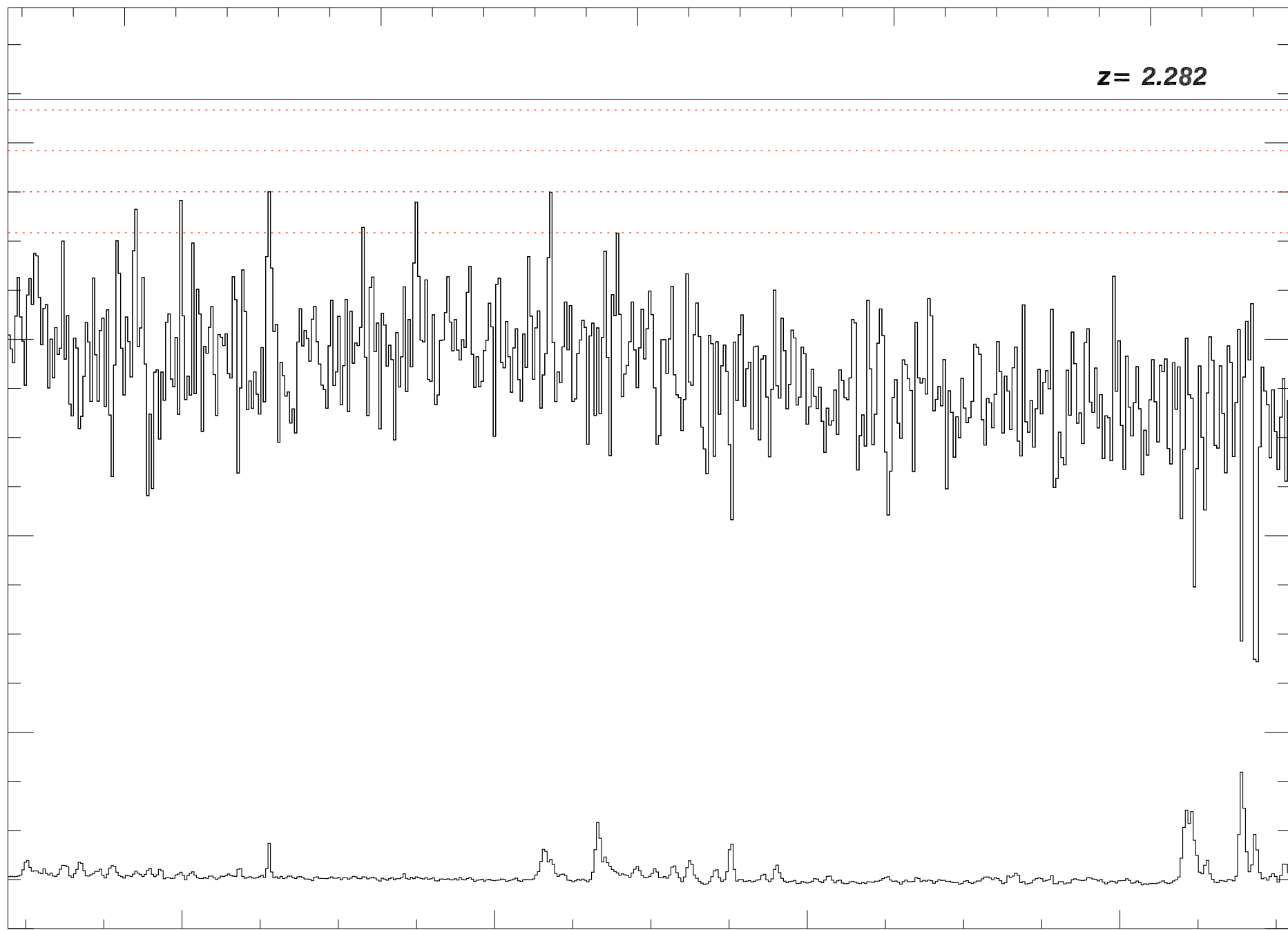
6600

6800

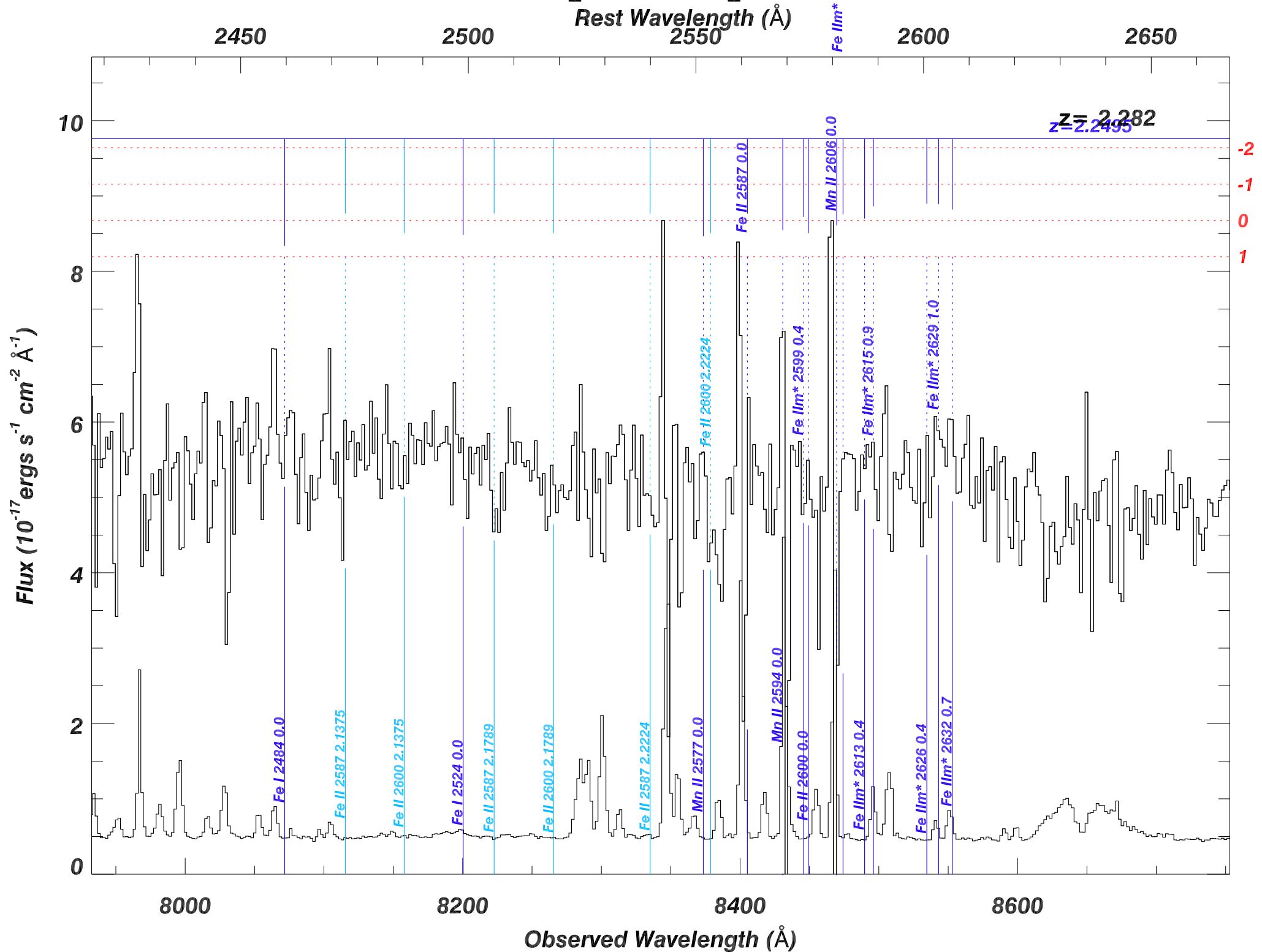
7000

7200

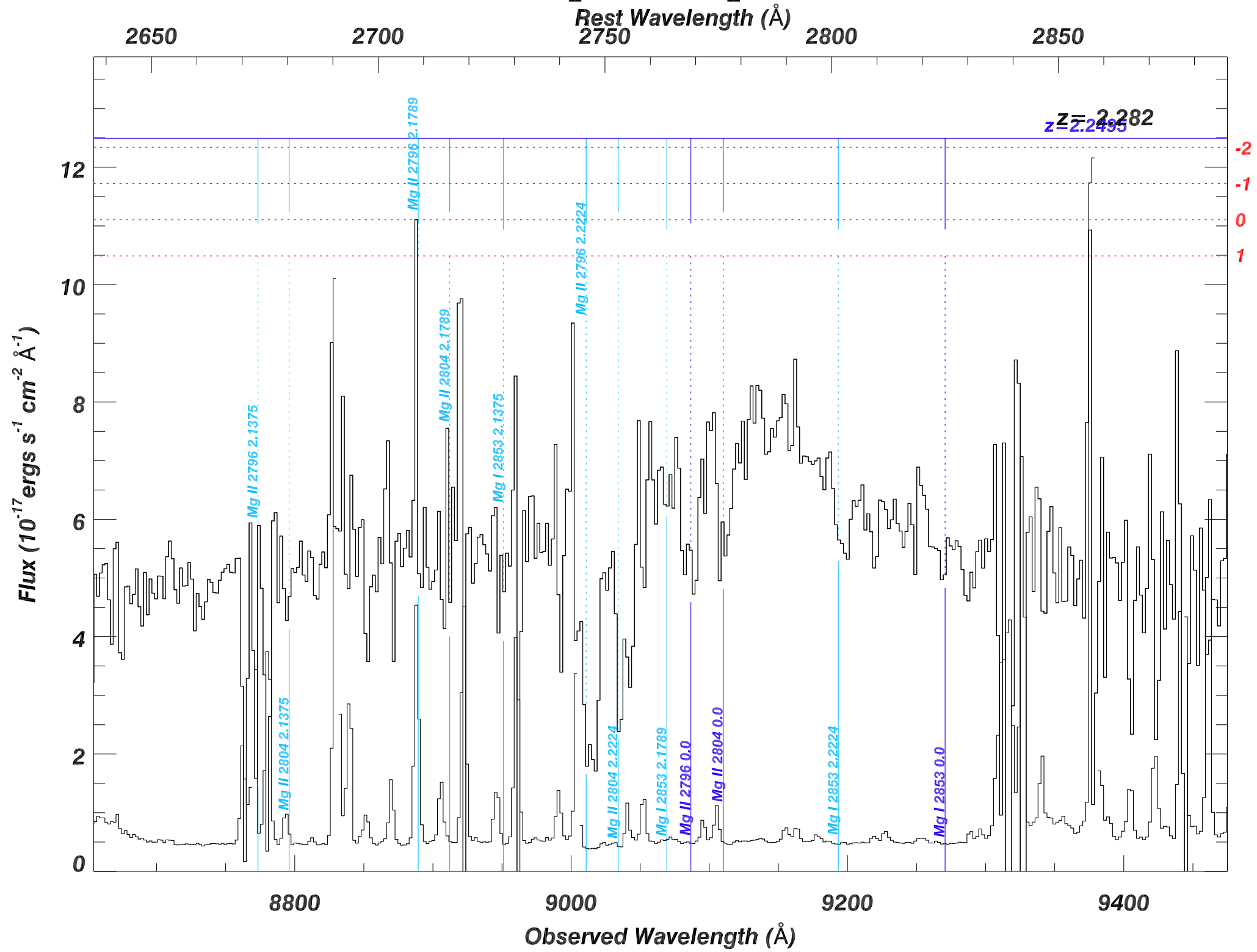
Observed Wavelength (Å)



SDSS_J0947+4538_MJD55957



SDSS_J0947+4538_MJD55957



SDSS_J0947+4538_MJD55957

Rest Wavelength (\AA)

2900

2950

3000

3050

3100

$z=2.2495$

$z=2.282$

Flux ($10^{-17} \text{ ergs s}^{-1} \text{ cm}^{-2} \text{ \AA}^{-1}$)

14

12

10

8

6

4

2

0

-2

-1

0

1

He I m* 2946.159.9

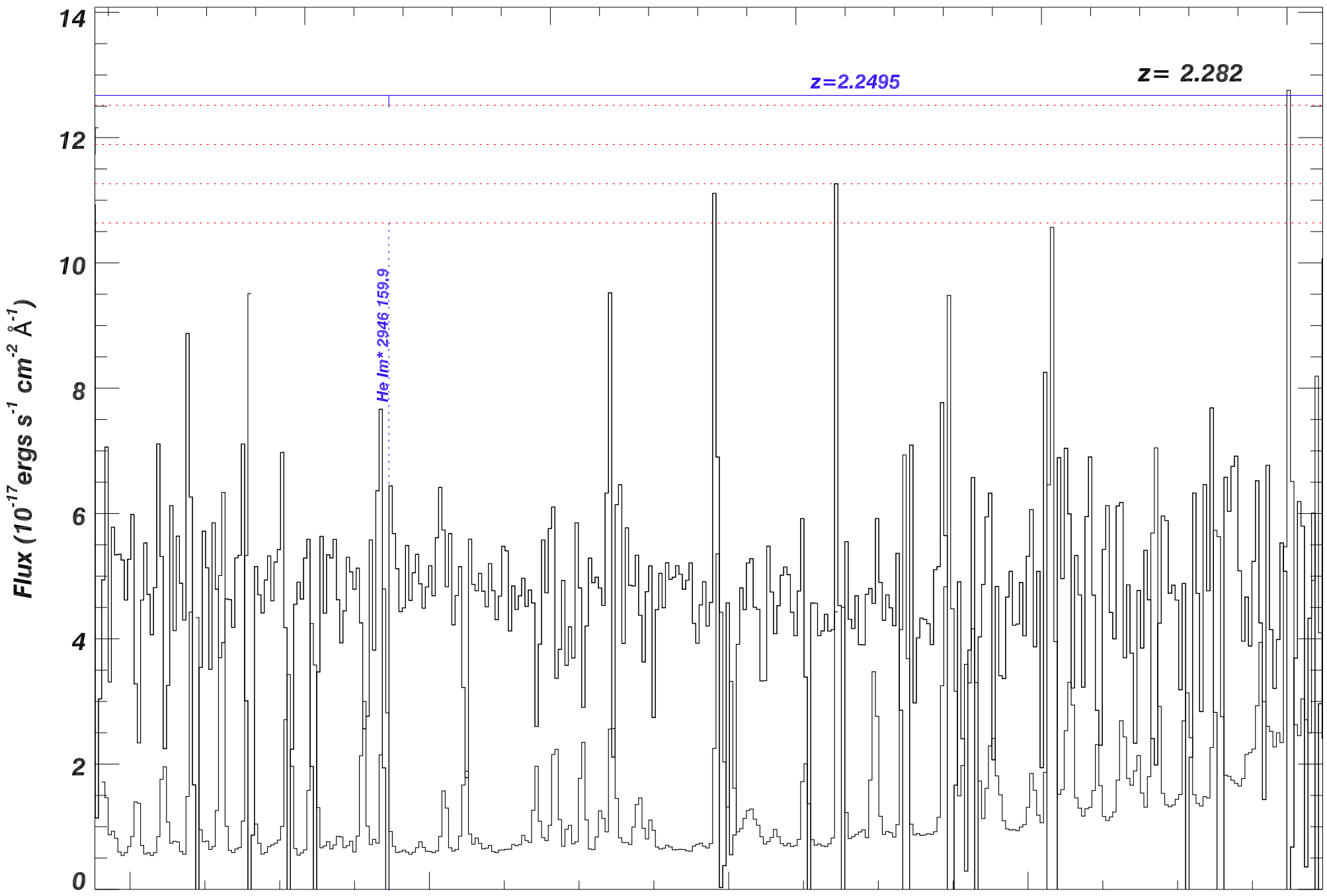
9400

9600

9800

10000

Observed Wavelength (\AA)



SDSS_J0947+4538_MJD55957

Rest Wavelength (\AA)

3100

3200

3300

3400

$z=2.2495$

$z= 2.282$

-2

-1

0

1

He I λ 3189.159,9

Flux ($10^{-17} \text{ ergs s}^{-1} \text{ cm}^{-2} \text{ \AA}^{-1}$)

40

30

20

10

0

1.02×10^4

1.04×10^4

1.06×10^4

1.08×10^4

1.10×10^4

1.12×10^4

1.14×10^4

Observed Wavelength (\AA)

