

SDSS_J1435+0729_MJD55684

Rest Wavelength (Å)

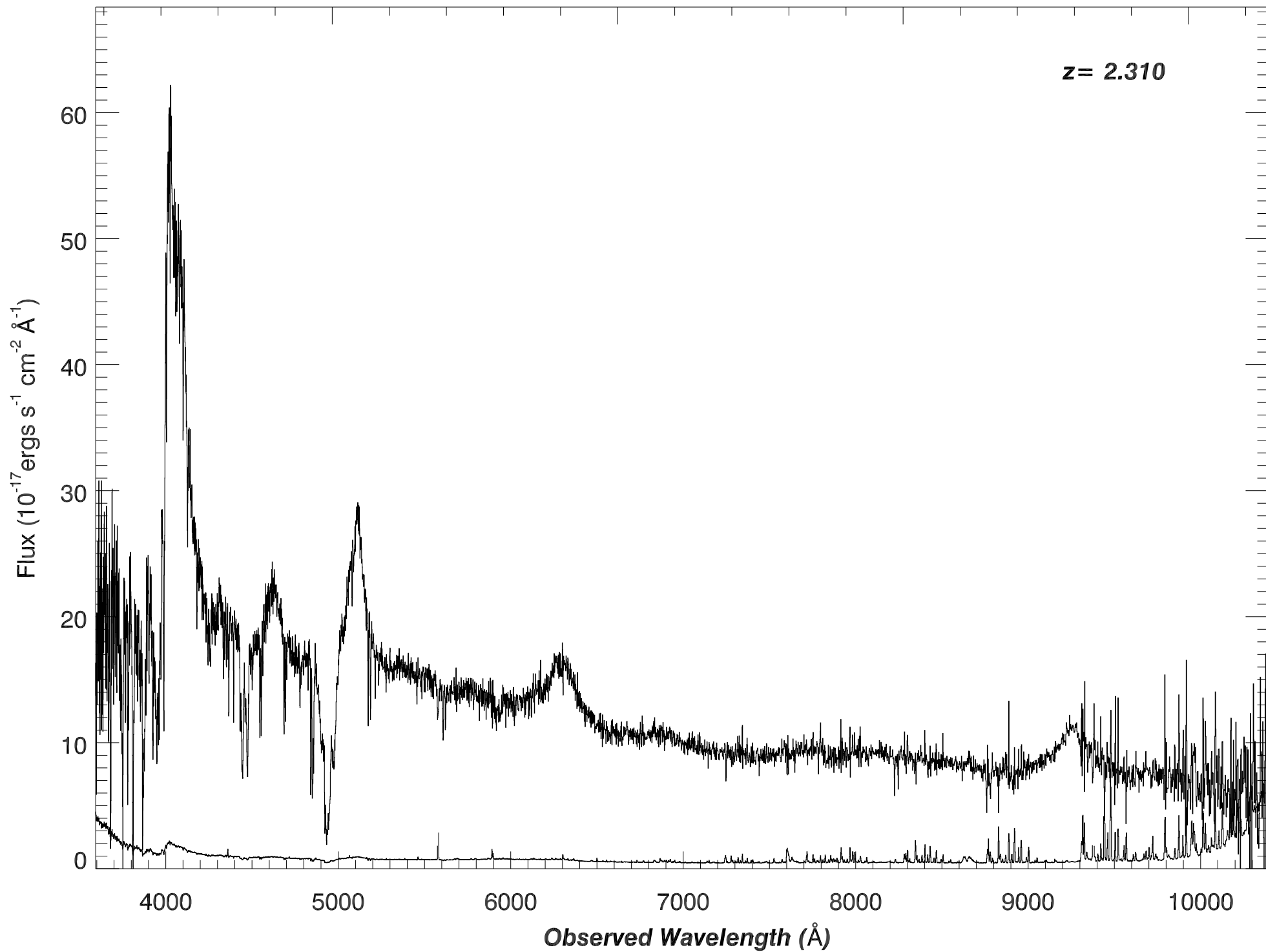
1500

2000

2500

3000

z = 2.310



SDSS_J1435+0729_MJD55684

Rest Wavelength (Å)

1100

1150

1200

1250

1300

Flux (10^{-17} ergs s^{-1} cm^{-2} \AA^{-1})

60

40

20

0

-2

-1

0

1

$z=2.1862$ $z=2.310$

3600

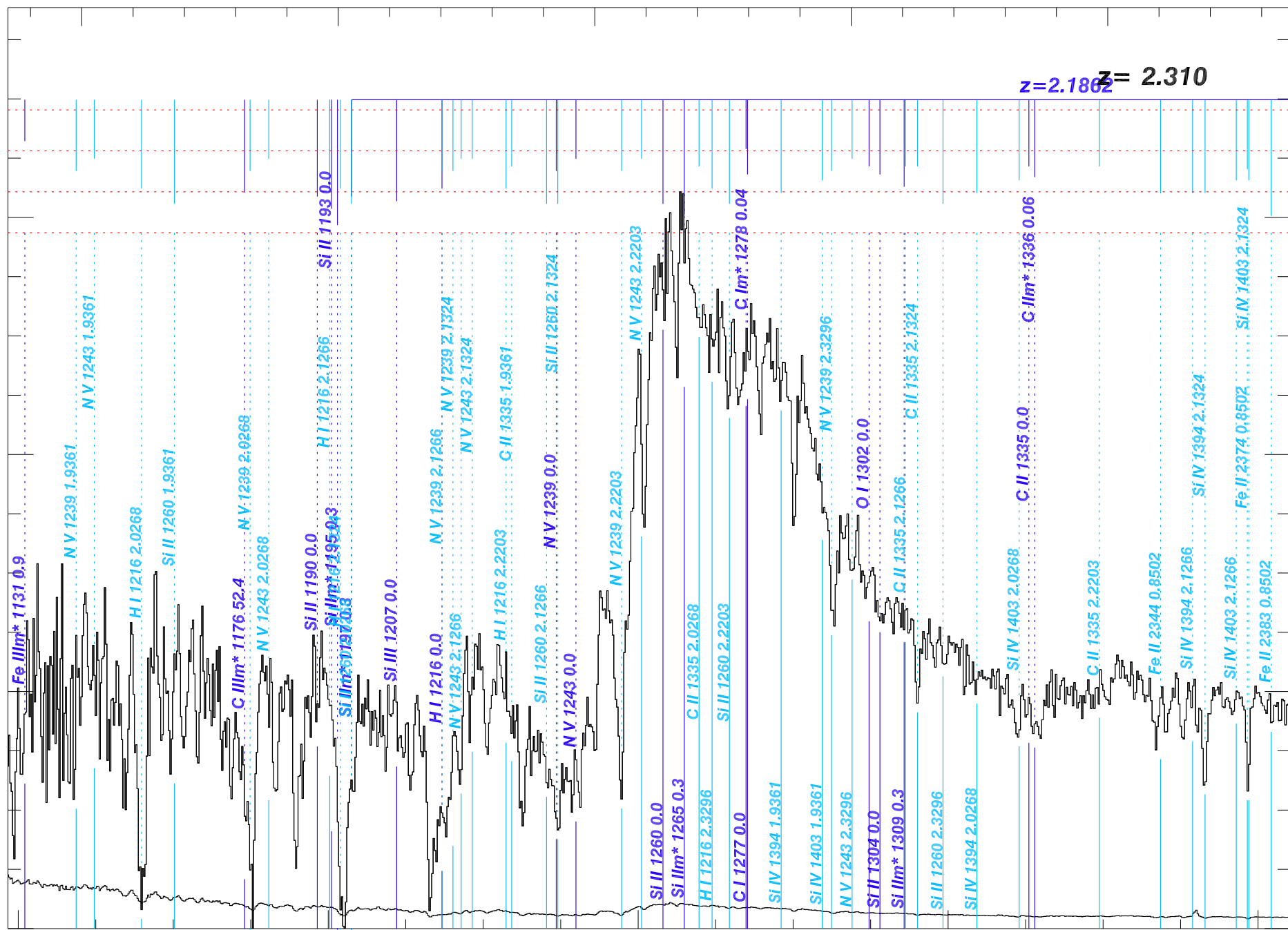
3800

4000

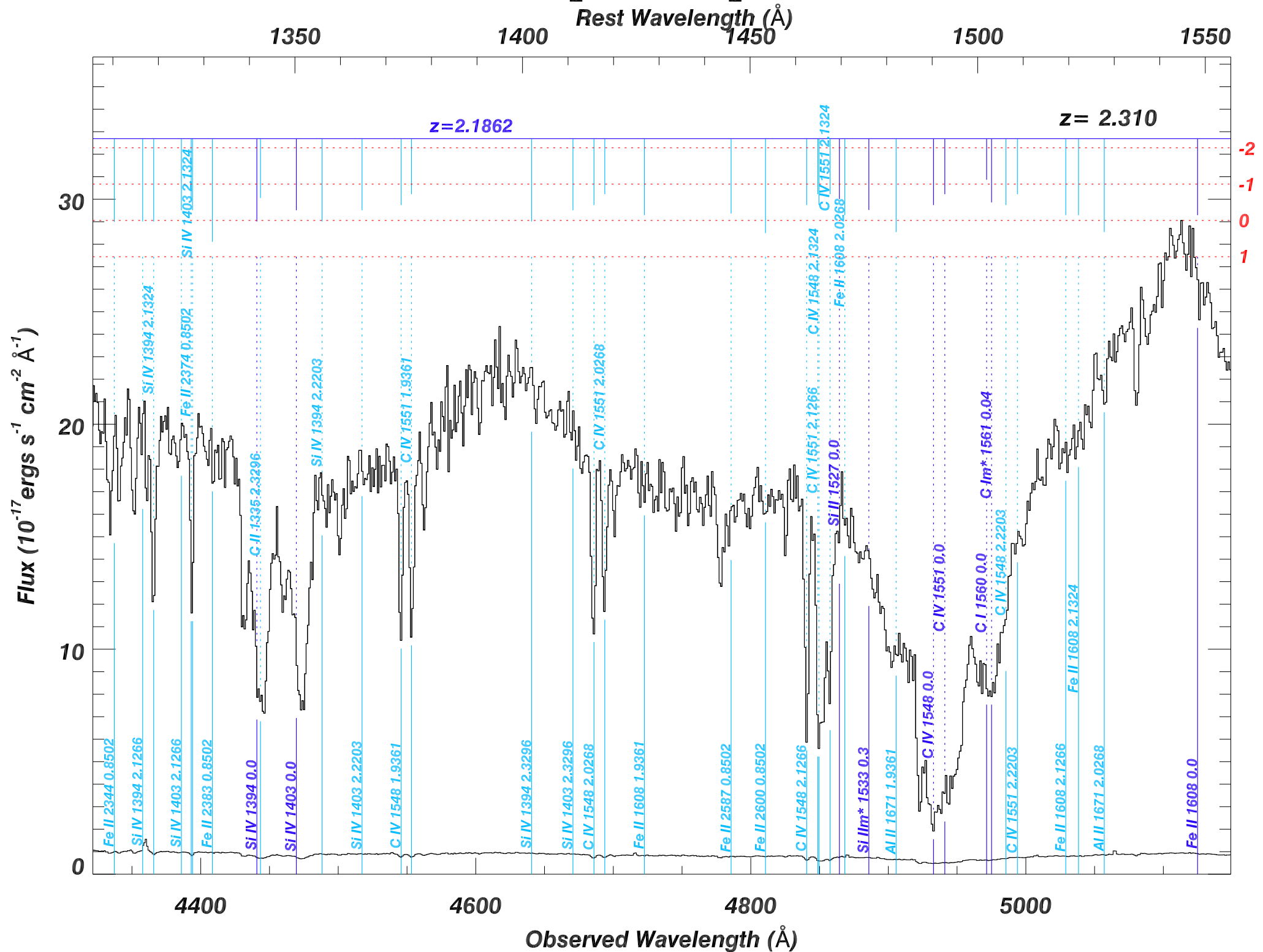
4200

4400

Observed Wavelength (Å)



SDSS_J1435+0729_MJD55684



SDSS_J1435+0729_MJD55684

Rest Wavelength (\AA)

1550

1600

1650

1700

1750

Flux ($10^{-17} \text{ ergs s}^{-1} \text{ cm}^{-2} \text{ \AA}^{-1}$)

30

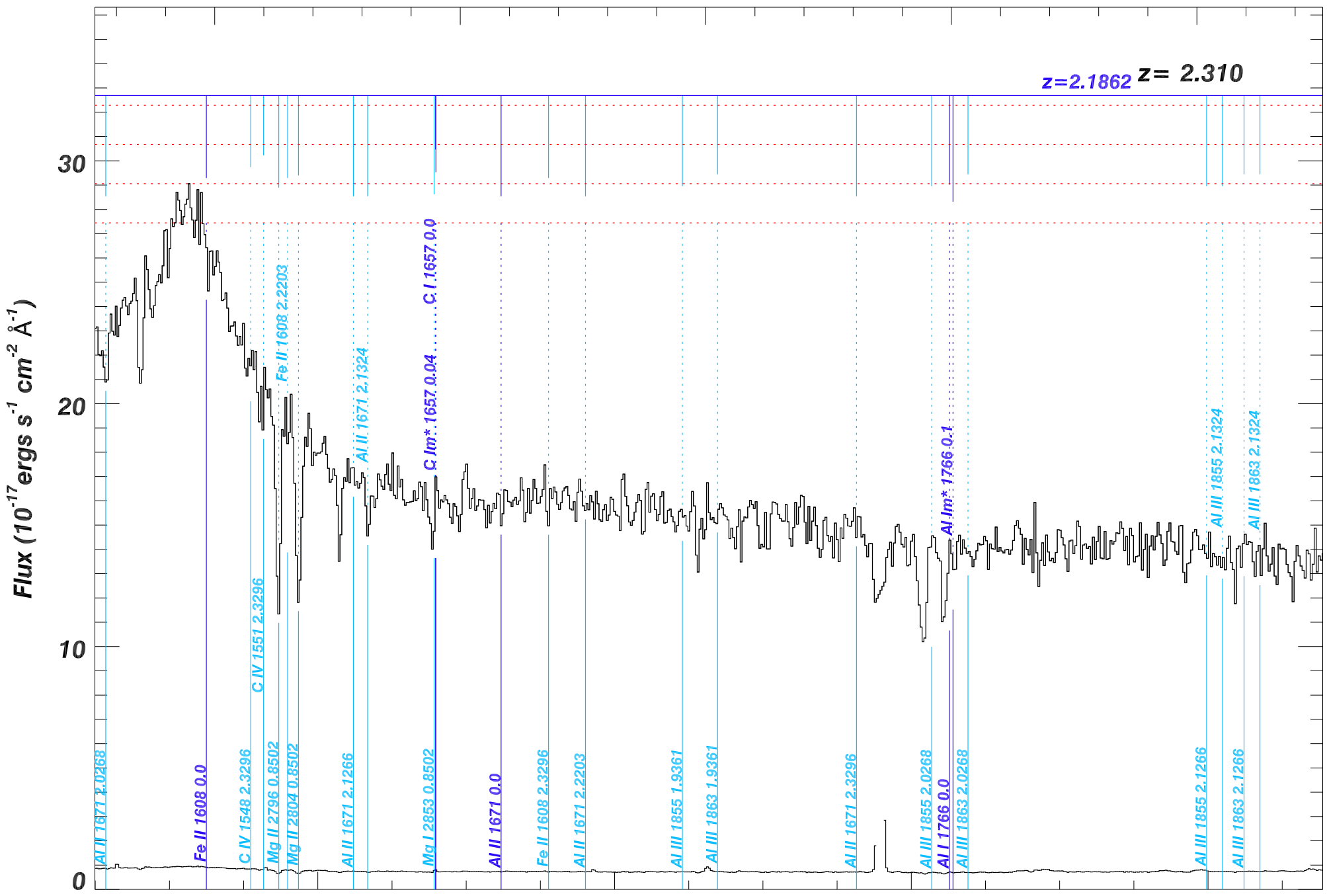
20

10

0

$z=2.1862$ $z=2.310$

-2
-1
0
1



5200

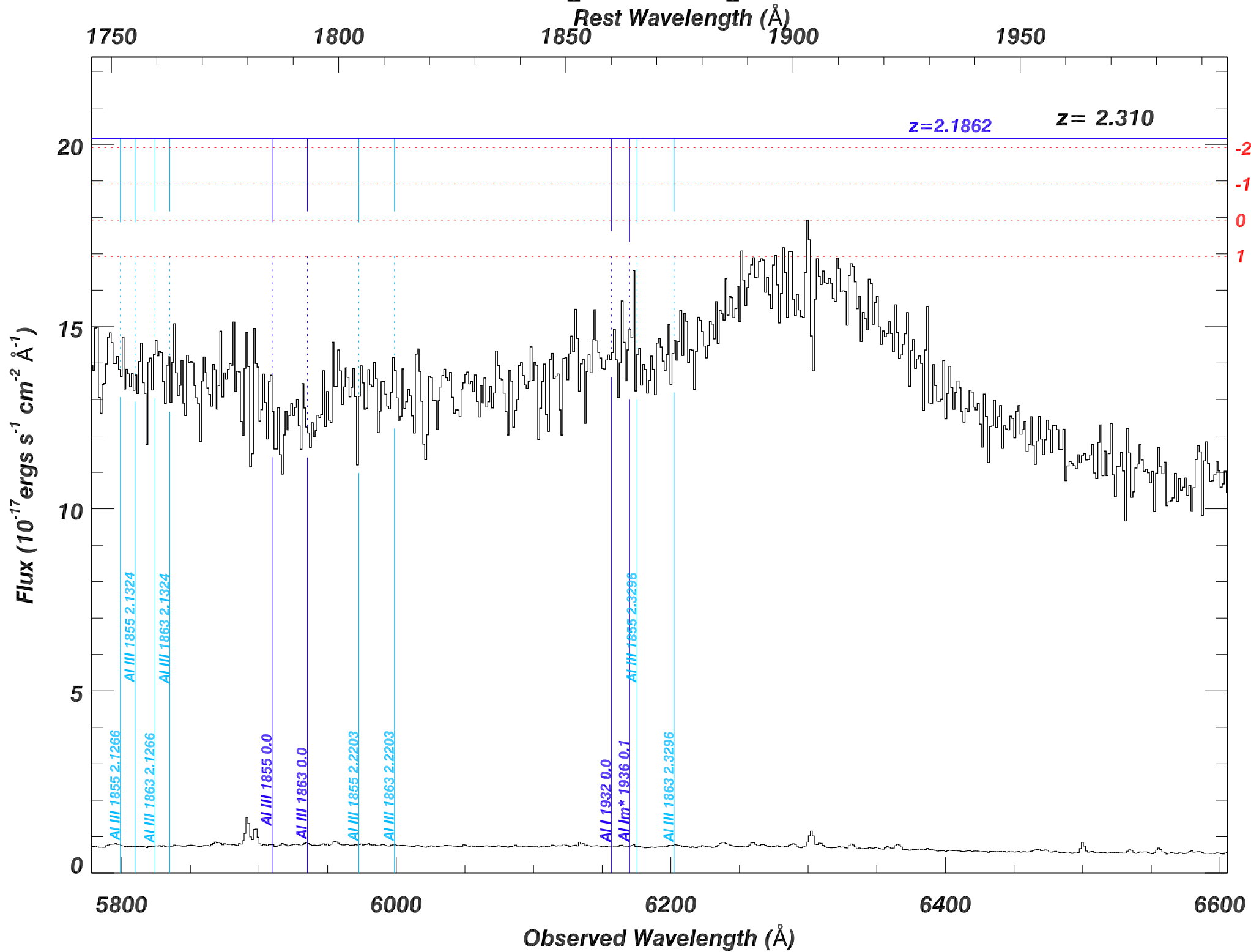
5400

5600

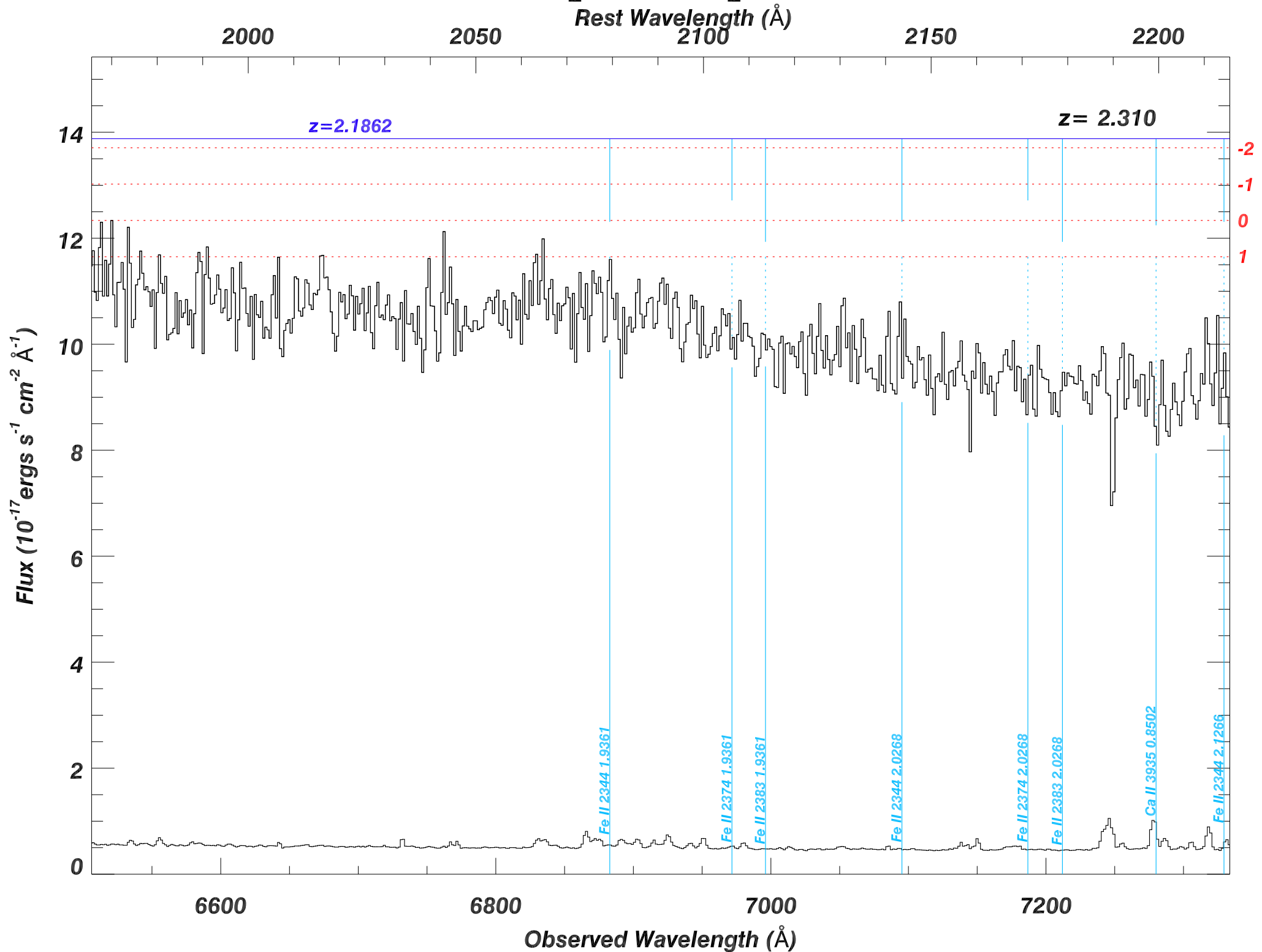
5800

Observed Wavelength (\AA)

SDSS_J1435+0729_MJD55684



SDSS_J1435+0729_MJD55684



SDSS_J1435+0729_MJD55684

Rest Wavelength (\AA)

2200

2250

2300

2350

2400

Flux ($10^{-17} \text{ ergs s}^{-1} \text{ cm}^{-2} \text{ \AA}^{-1}$)

14

12

10

8

6

4

2

0

$z=2.1862$

$z=2.310$

-2
-1
0
1

Ca II 3935 0.8502

Fe II 2344 2.1266

Fe II 2344 2.1324

Ca II 3970 0.8502

Fe II 2374 2.1266

Fe II 2374 2.1324

Fe II 2383 2.1266

Fe II 2383 2.1324

Fe IIIm* 2349 0.7

Fe IIIm* 2366 0.4

Fe II 2374 0.0

Fe II 2383 0.0

Fe II 2587 1.9361

Fe IIIm* 2389 0.4

Fe II 2600 1.9361

Fe IIIm* 2400 0.7

Fe IIIm* 2406 0.7

Fe IIIm* 2411 0.9

Fe IIIm* 2412 1.0

Fe IIIm* 2414 1.0

Fe II 2344 2.3296

Fe II 2587 2.0268

Fe II 2600 2.0268

Fe II 2374 2.3296

Fe II 2383 2.3296

Fe I 2524 0.0

7400

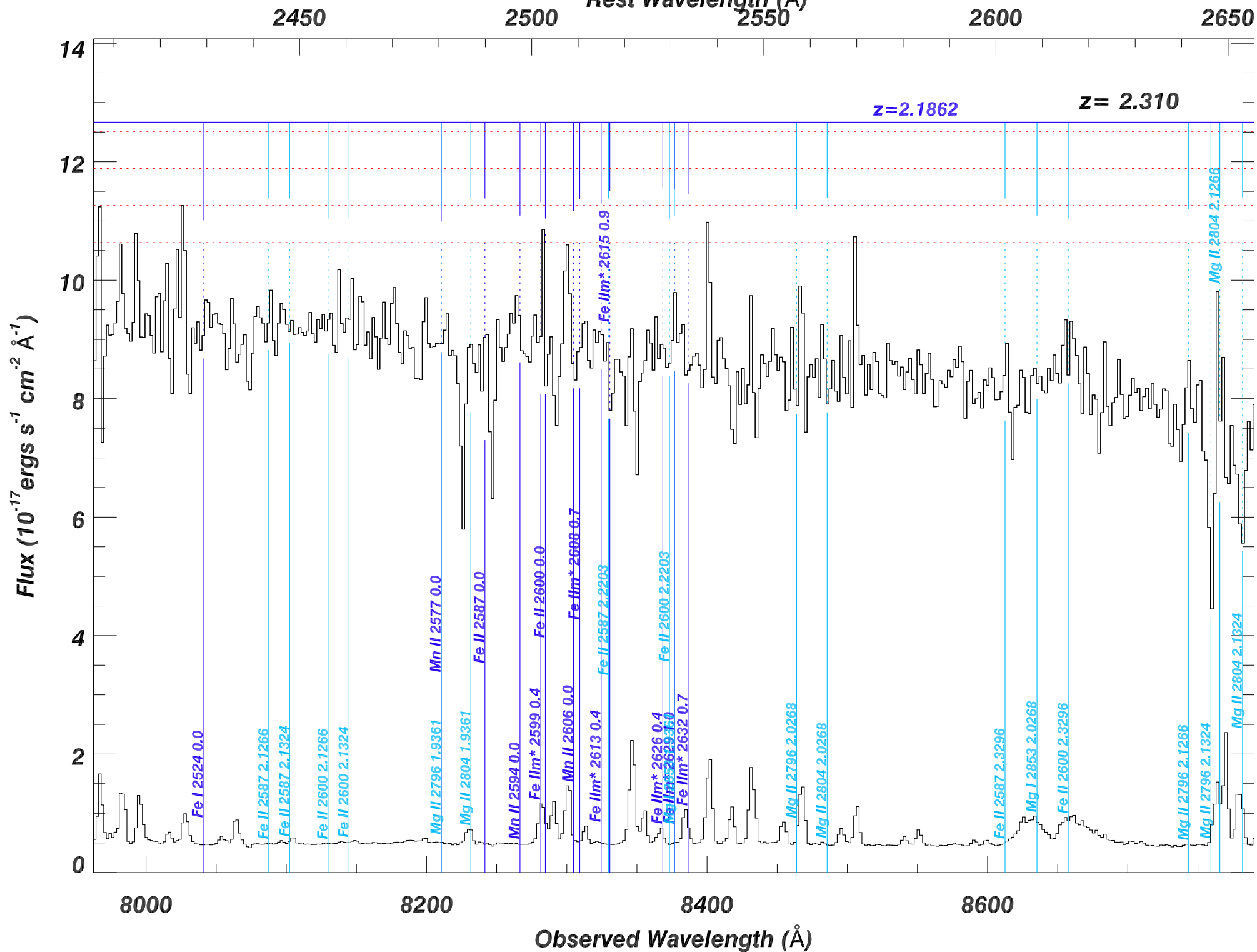
7600

7800

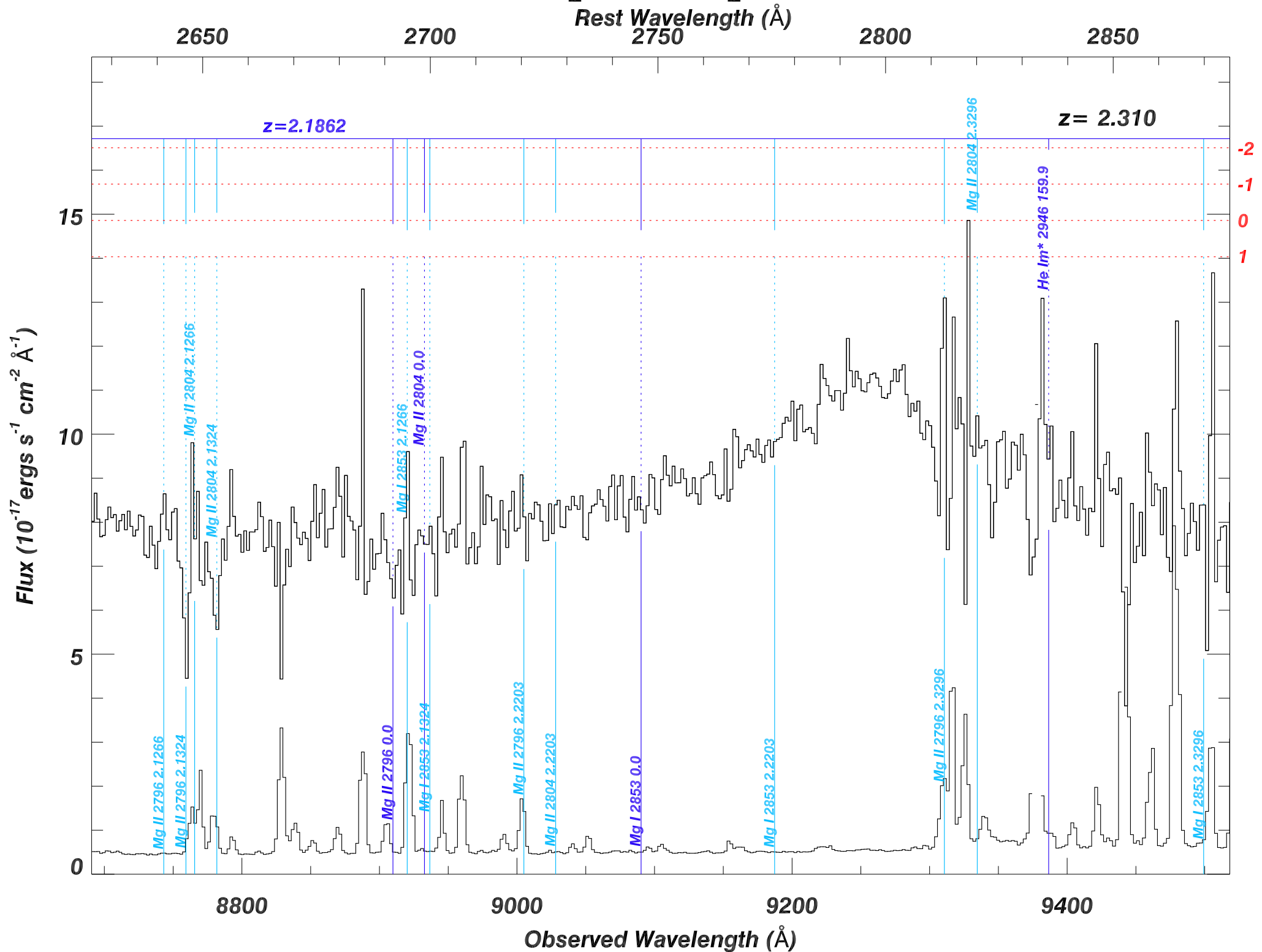
8000

Observed Wavelength (\AA)

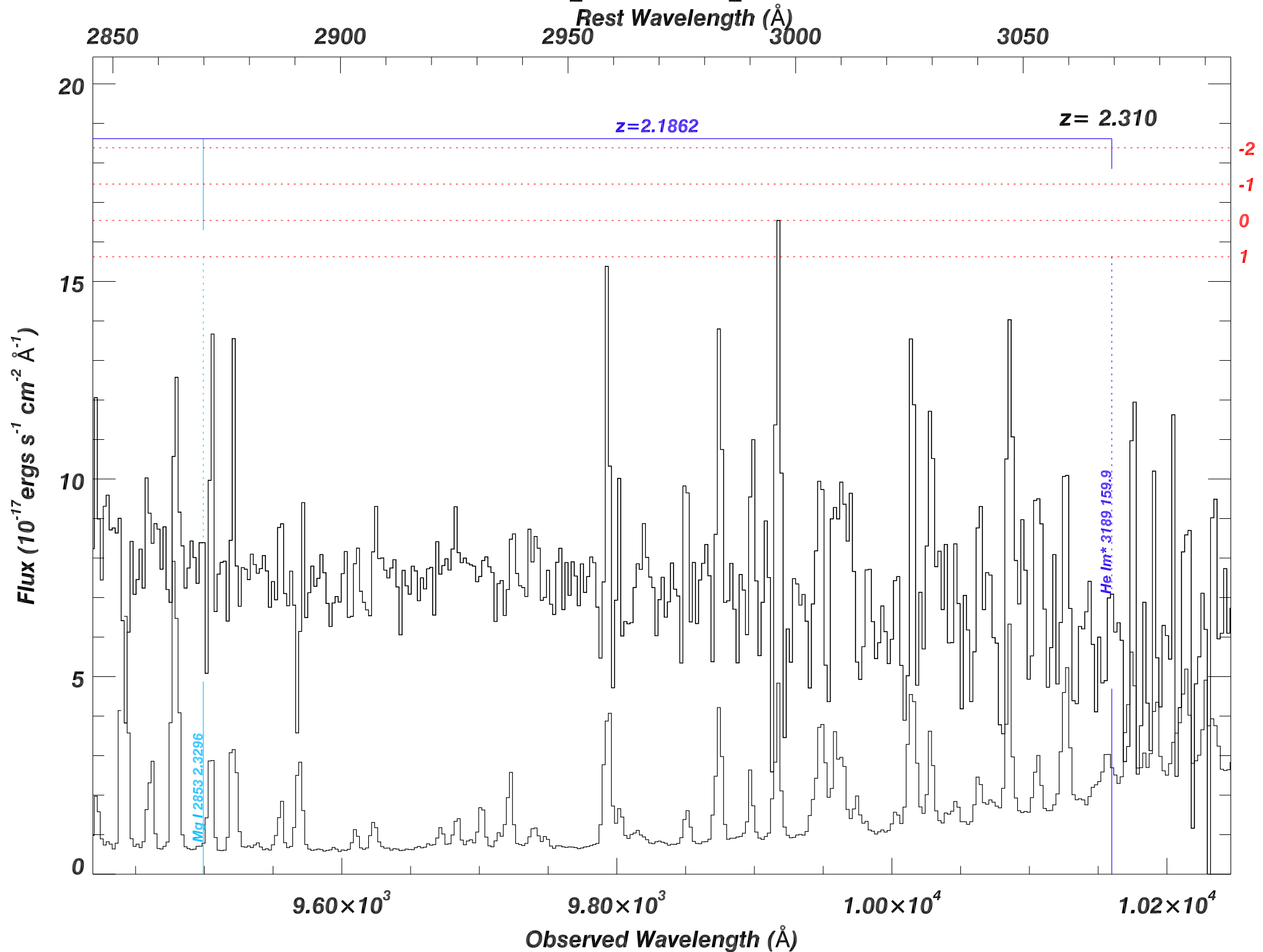
SDSS_J1435+0729_MJD55684

Rest Wavelength (\AA)

SDSS_J1435+0729_MJD55684



SDSS_J1435+0729_MJD55684



SDSS_J1435+0729_MJD55684

Rest Wavelength (\AA)

3100

3200

3300

3400

20
 $z=2.1862$

$z = 2.310$

-2
-1
0
1

Flux ($10^{-17} \text{ ergs s}^{-1} \text{ cm}^{-2} \text{ \AA}^{-1}$)

15

10

5

0

1.02×10^4

1.04×10^4

1.06×10^4

1.08×10^4

1.10×10^4

1.12×10^4

1.14×10^4

Observed Wavelength (\AA)

He I m* 3189.759.9

