

SDSS_J2351-0618_MJD56573

Rest Wavelength (Å)

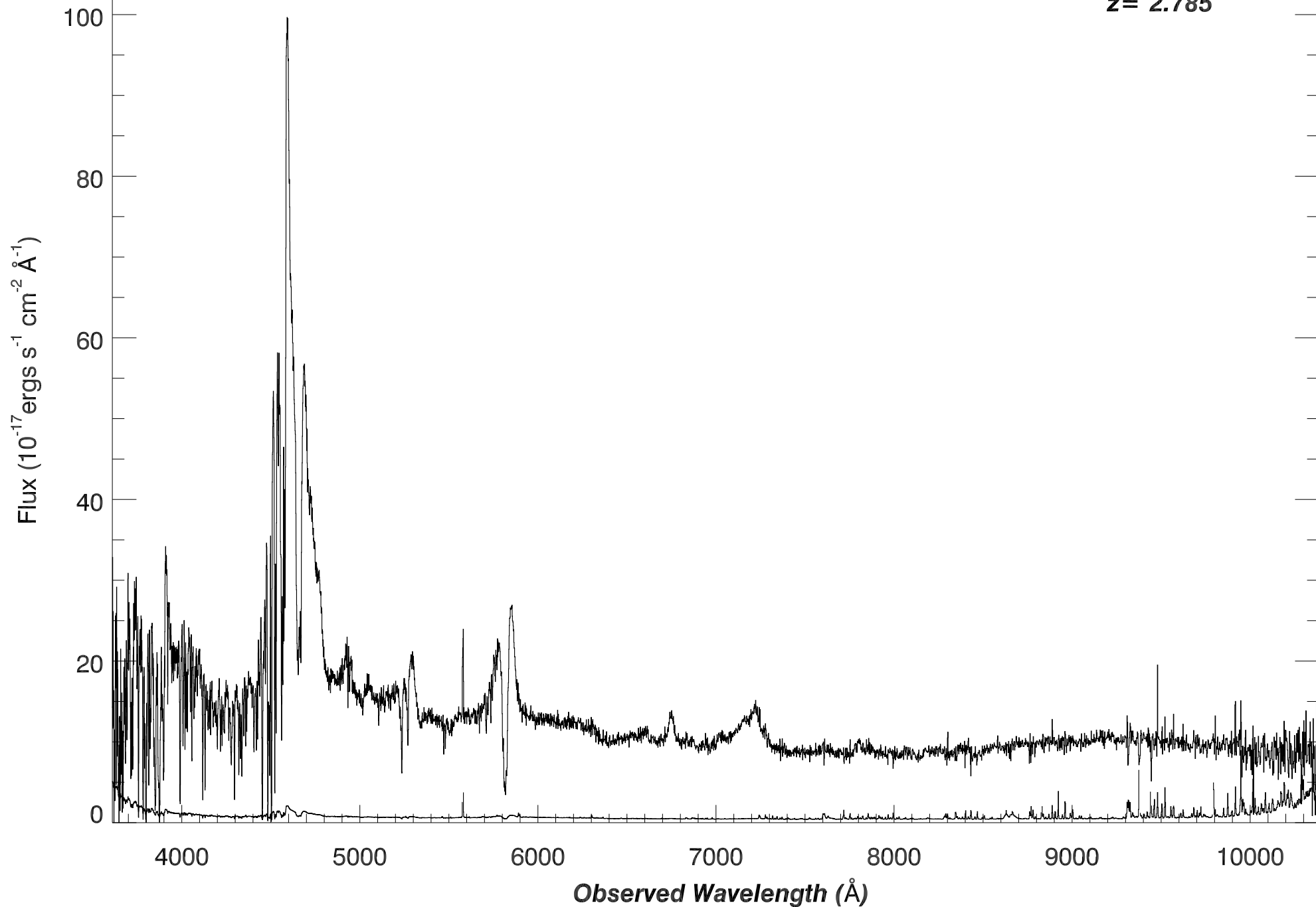
1000

1500

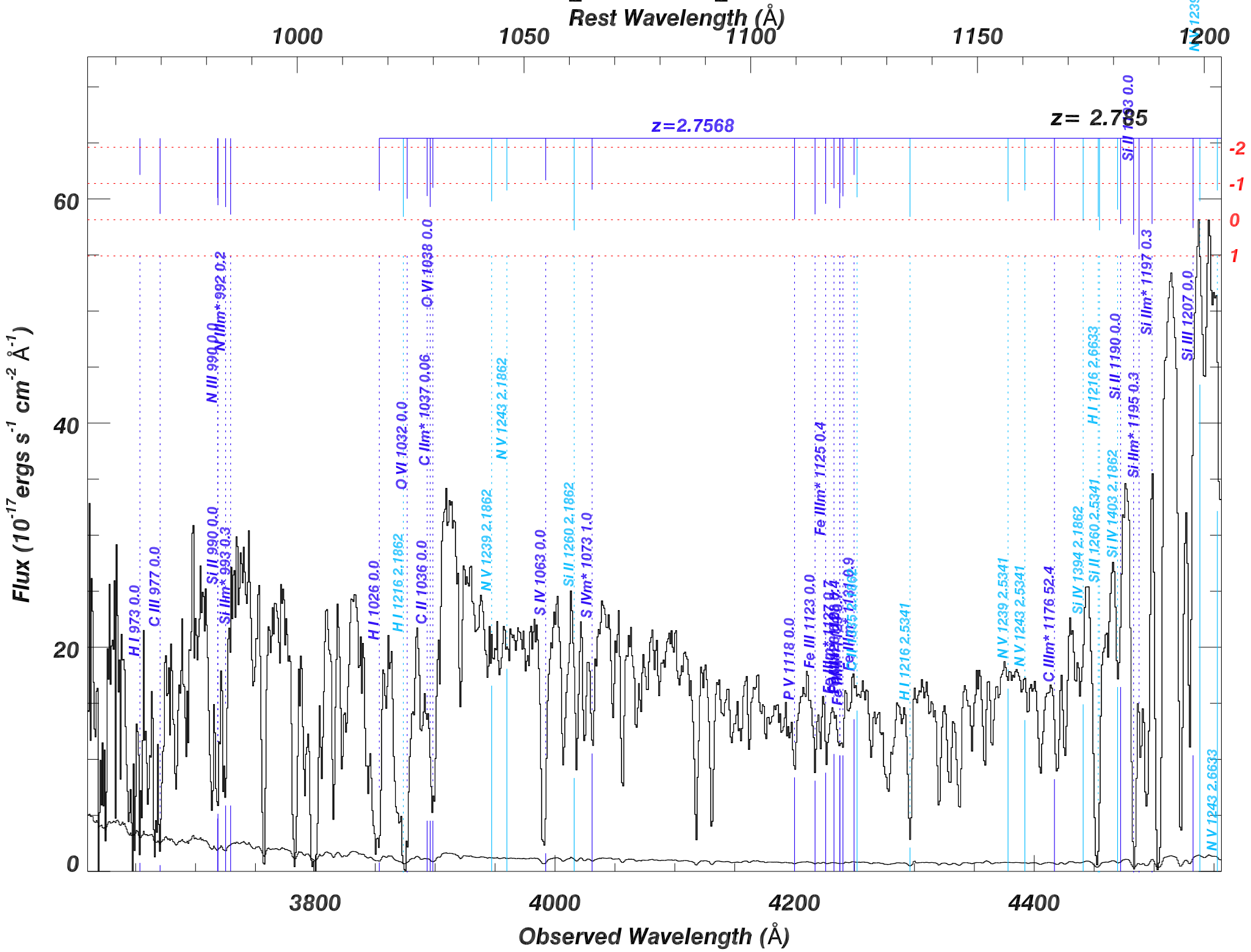
2000

2500

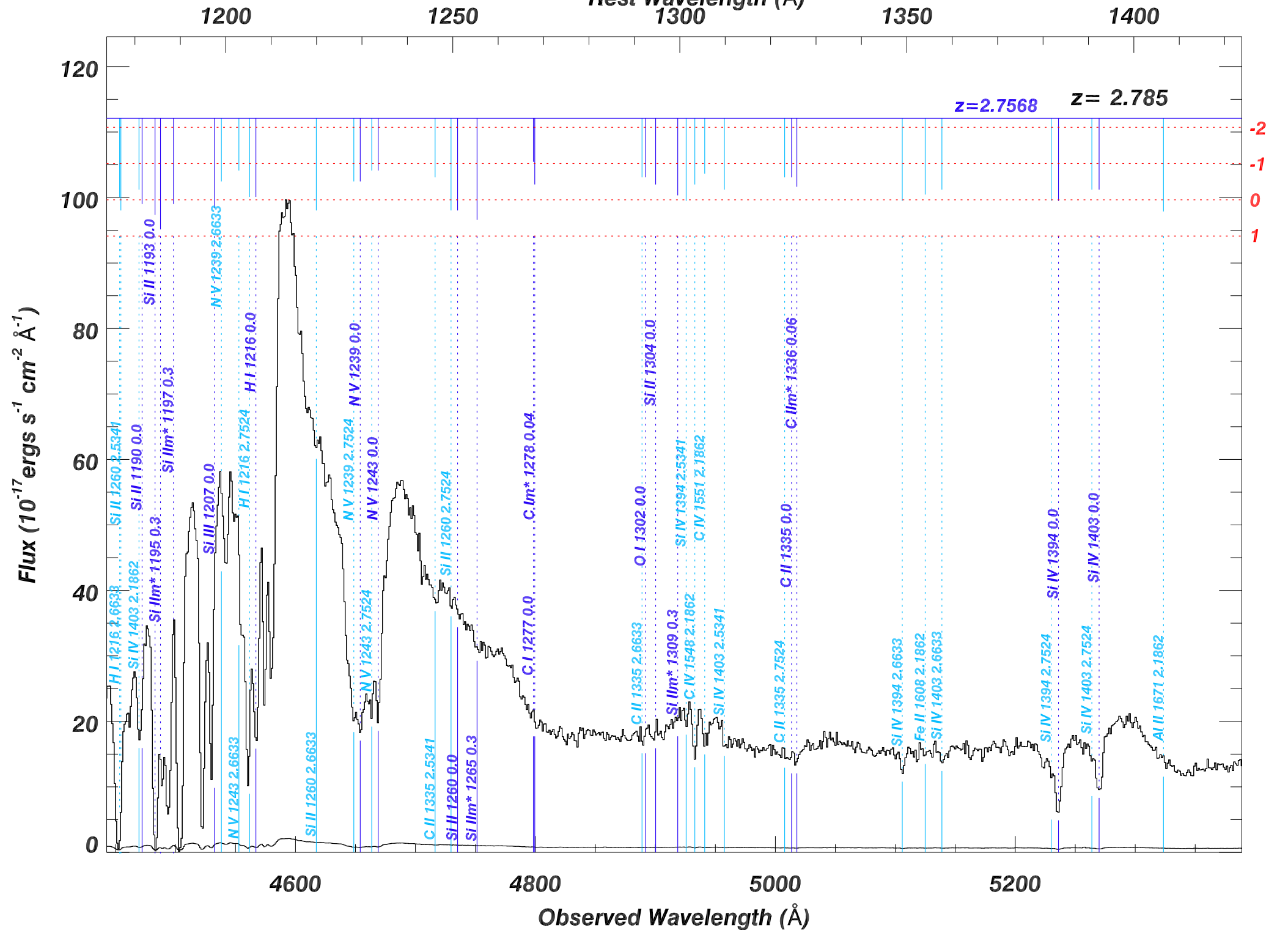
$z = 2.785$



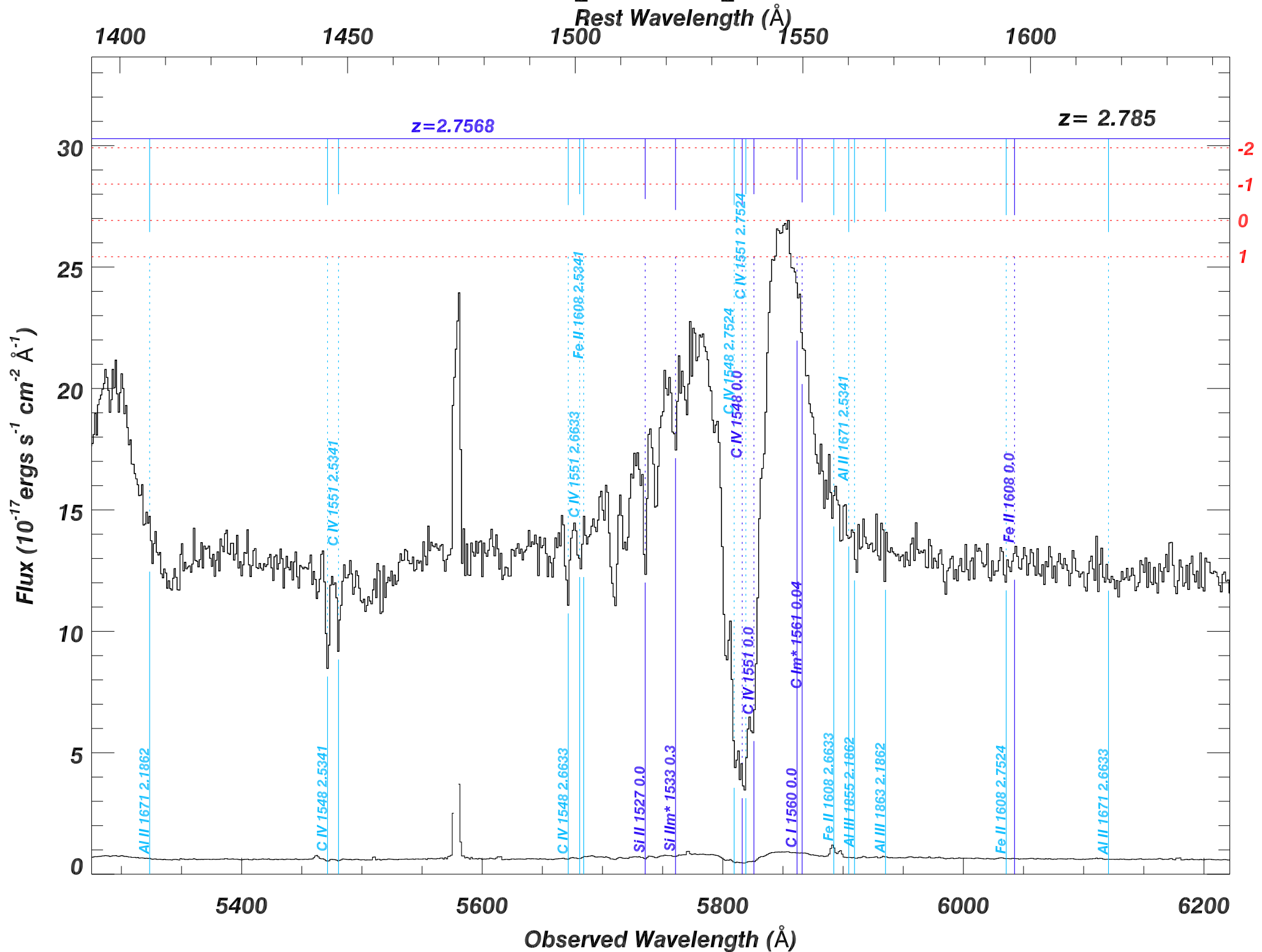
SDSS_J2351-0618_MJD56573



SDSS_J2351-0618_MJD56573

Rest Wavelength (\AA)

SDSS_J2351-0618_MJD56573



SDSS_J2351-0618_MJD56573

Rest Wavelength (\AA)

1650

1700

1750

1800

1850

$z=2.7568$

$z= 2.785$

Flux ($10^{-17} \text{ ergs s}^{-1} \text{ cm}^{-2} \text{ \AA}^{-1}$)

15

10

5

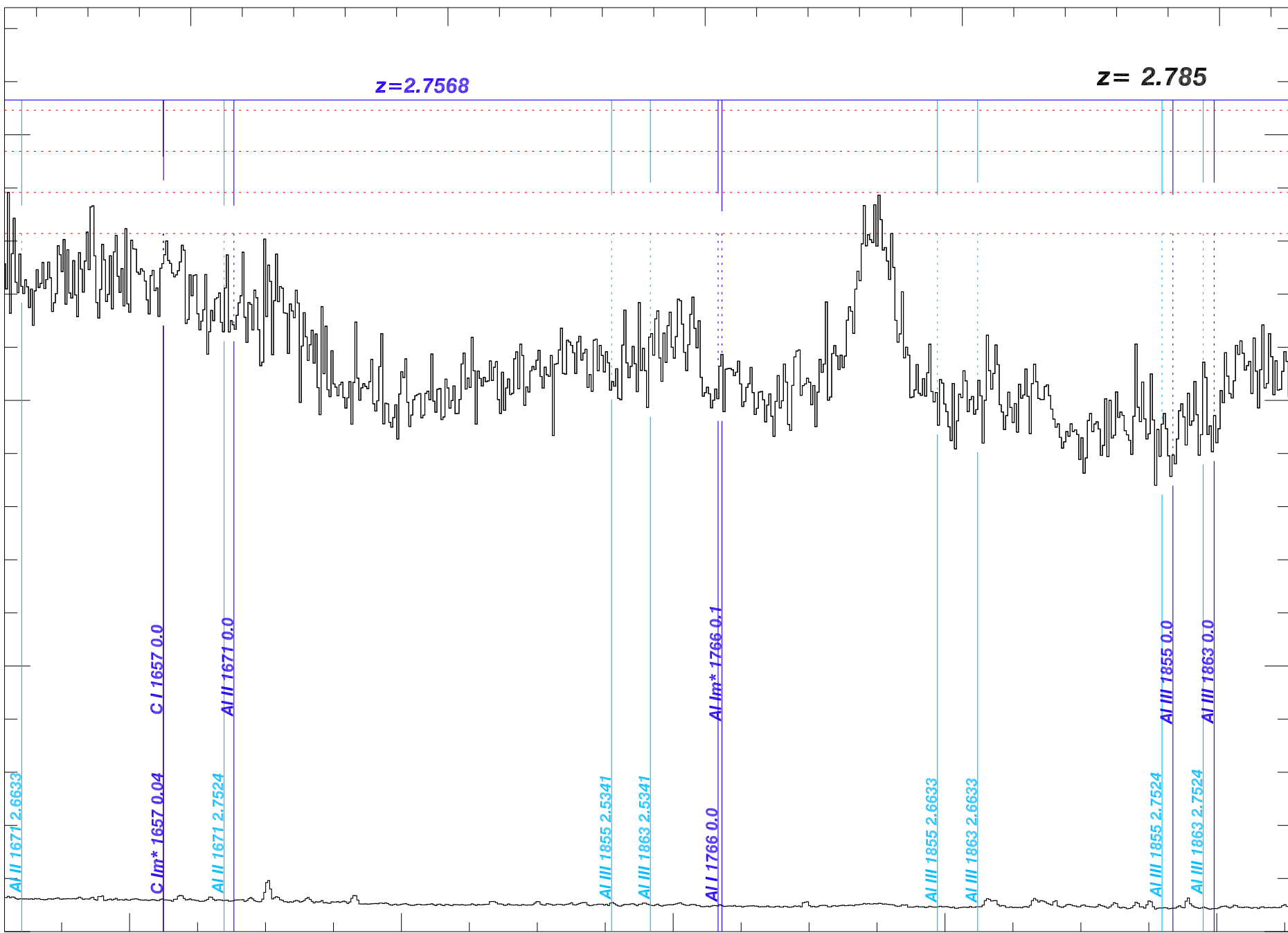
0

-2

-1

0

1



6200

6400

6600

6800

7000

Observed Wavelength (\AA)

SDSS_J2351-0618_MJD56573

Rest Wavelength (\AA)

1850

1900

1950

2000

2050

$z = 2.7568$
 $z = 2.785$

Flux ($10^{-17} \text{ ergs s}^{-1} \text{ cm}^{-2} \text{ \AA}^{-1}$)

15

10

5

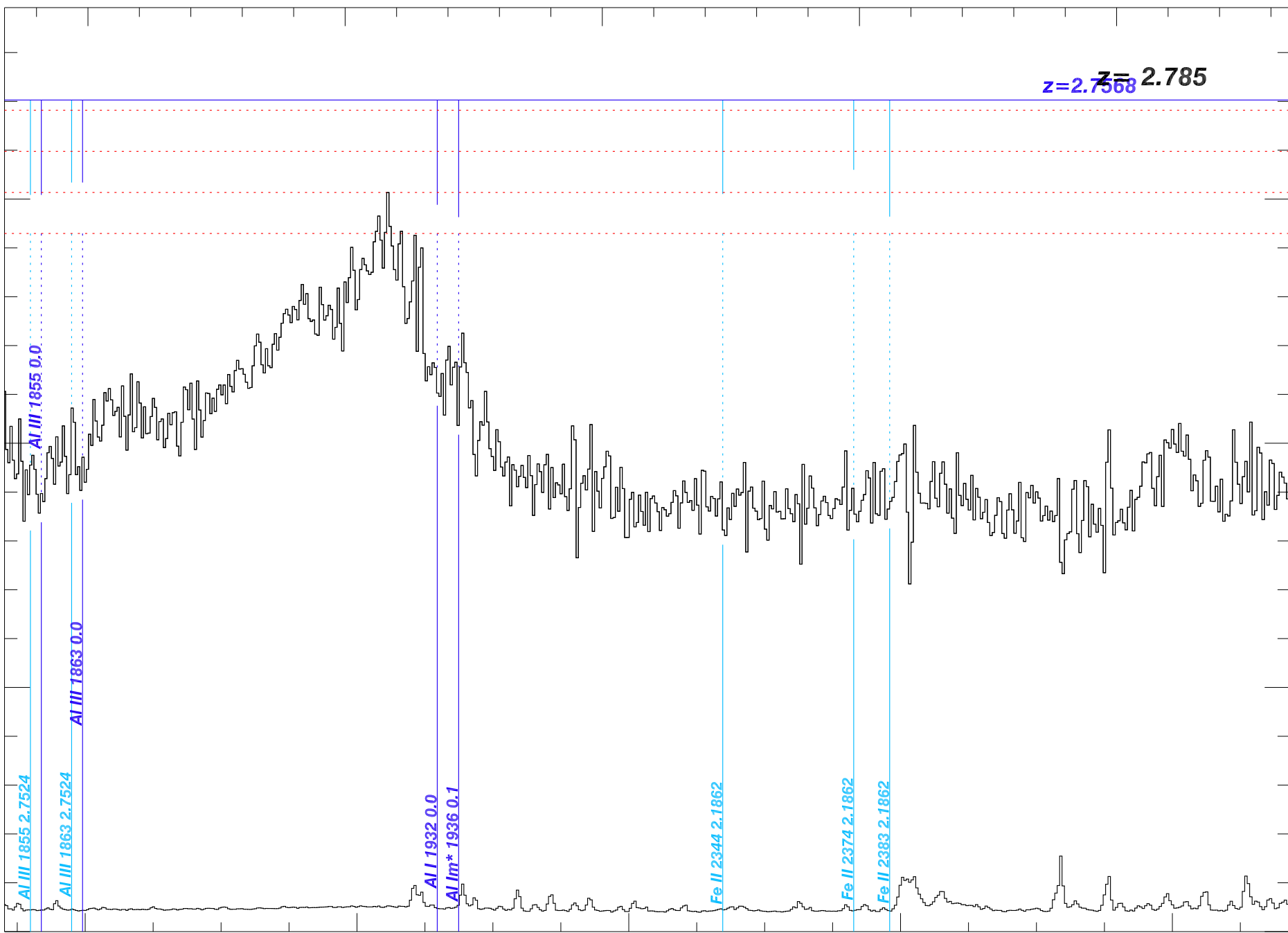
0

-2

-1

0

1



7000

7200

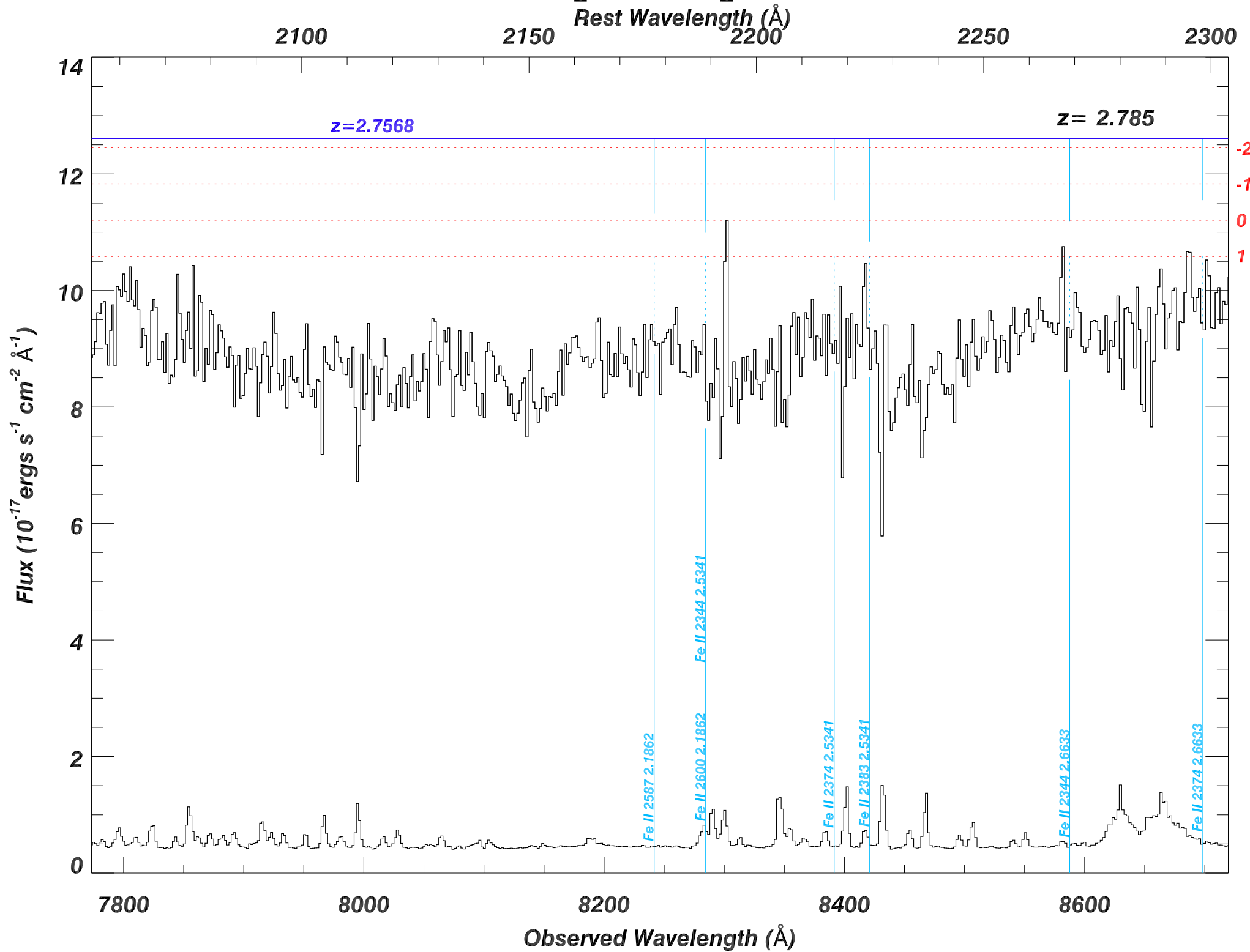
7400

7600

7800

Observed Wavelength (\AA)

SDSS_J2351-0618_MJD56573



SDSS_J2351-0618_MJD56573

Rest Wavelength (\AA)

2300

2350

2400

2450

2500

Flux ($10^{-17} \text{ ergs s}^{-1} \text{ cm}^{-2} \text{ \AA}^{-1}$)

20

15

10

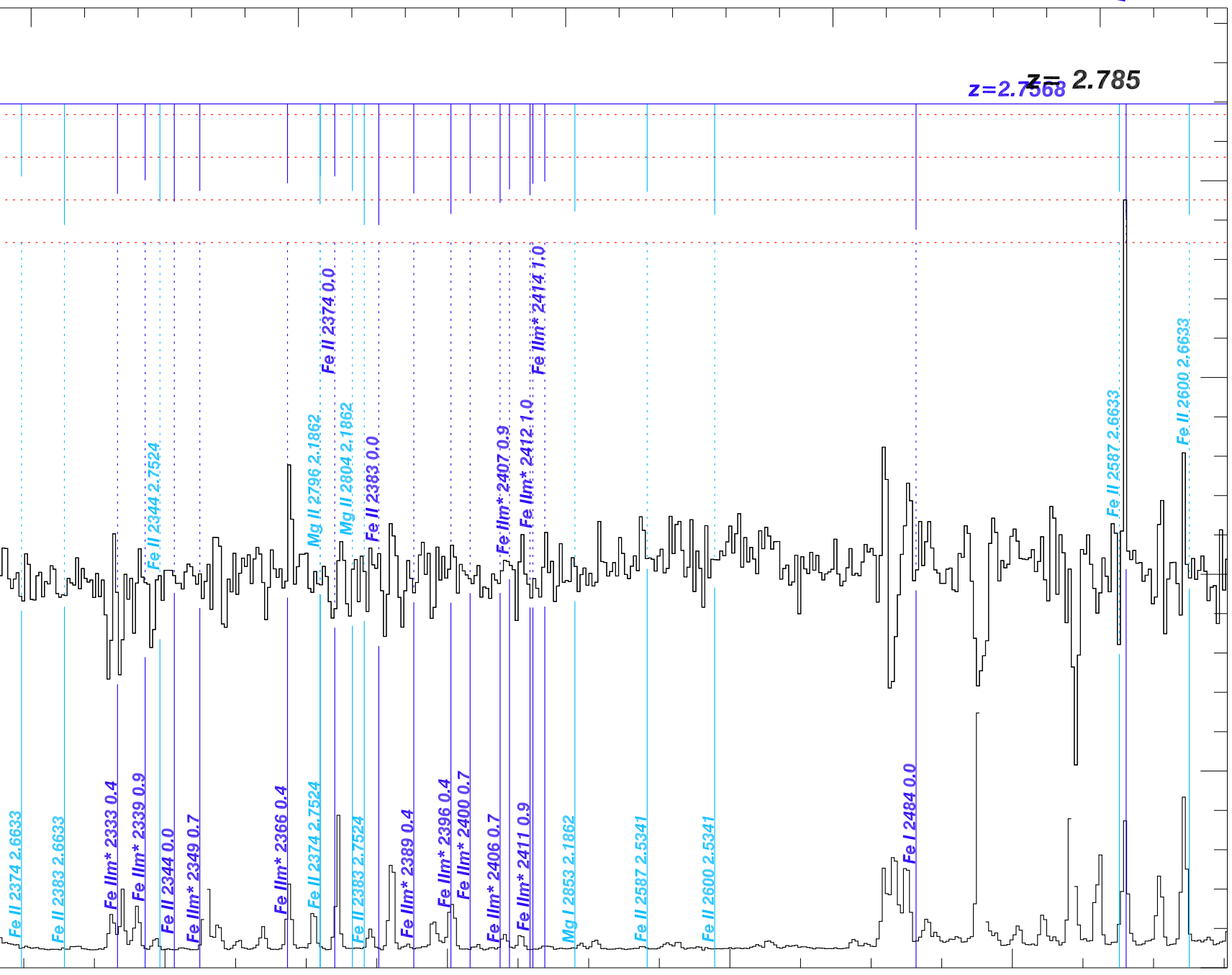
5

0

-2
-1
0
1

$z = 2.7568$
 $z = 2.785$

Fe II 2524 0.0



8800

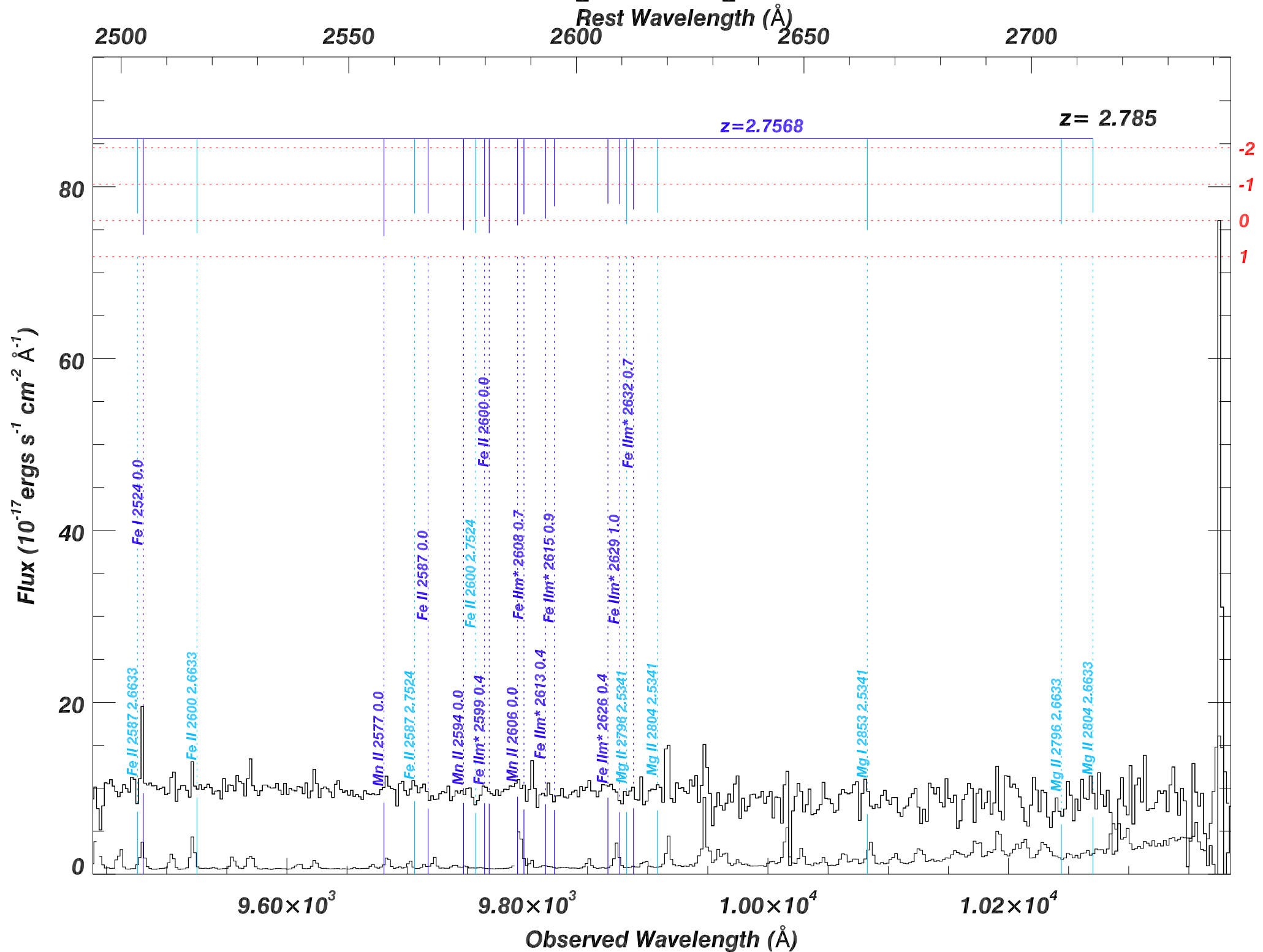
9000

9200

9400

Observed Wavelength (\AA)

SDSS_J2351-0618_MJD56573



SDSS_J2351-0618_MJD56573

Rest Wavelength (Å)

2750

2800

2850

2900

2950

z = 2.785

-2

-1

0

1

Flux (10^{-17} ergs s^{-1} cm^{-2} \AA^{-1})

80

60

40

20

0

1.04×10^4

1.06×10^4

1.08×10^4

1.10×10^4

1.12×10^4

Observed Wavelength (Å)

