

SDSS_J1055+4042_MJD55630

Rest Wavelength (\AA)

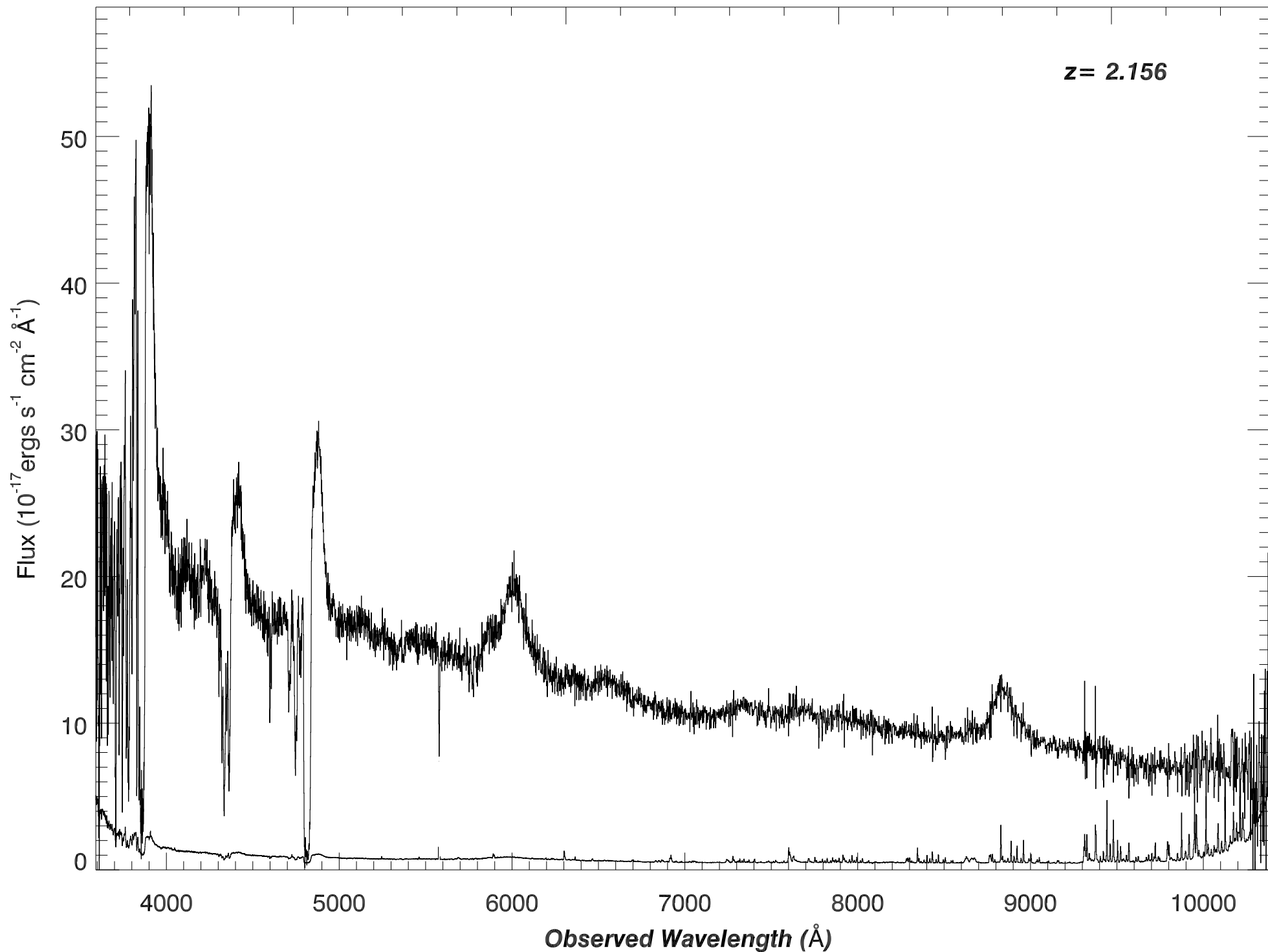
1500

2000

2500

3000

$z = 2.156$



SDSS_J1055+4042_MJD55630

Rest Wavelength (\AA)

1150

1200

1250

1300

1350

$z=2.1097$

$z= 2.156$

Flux ($10^{-17} \text{ ergs s}^{-1} \text{ cm}^{-2} \text{ \AA}^{-1}$)

60

50

40

30

20

10

0

-2

-1

0

1

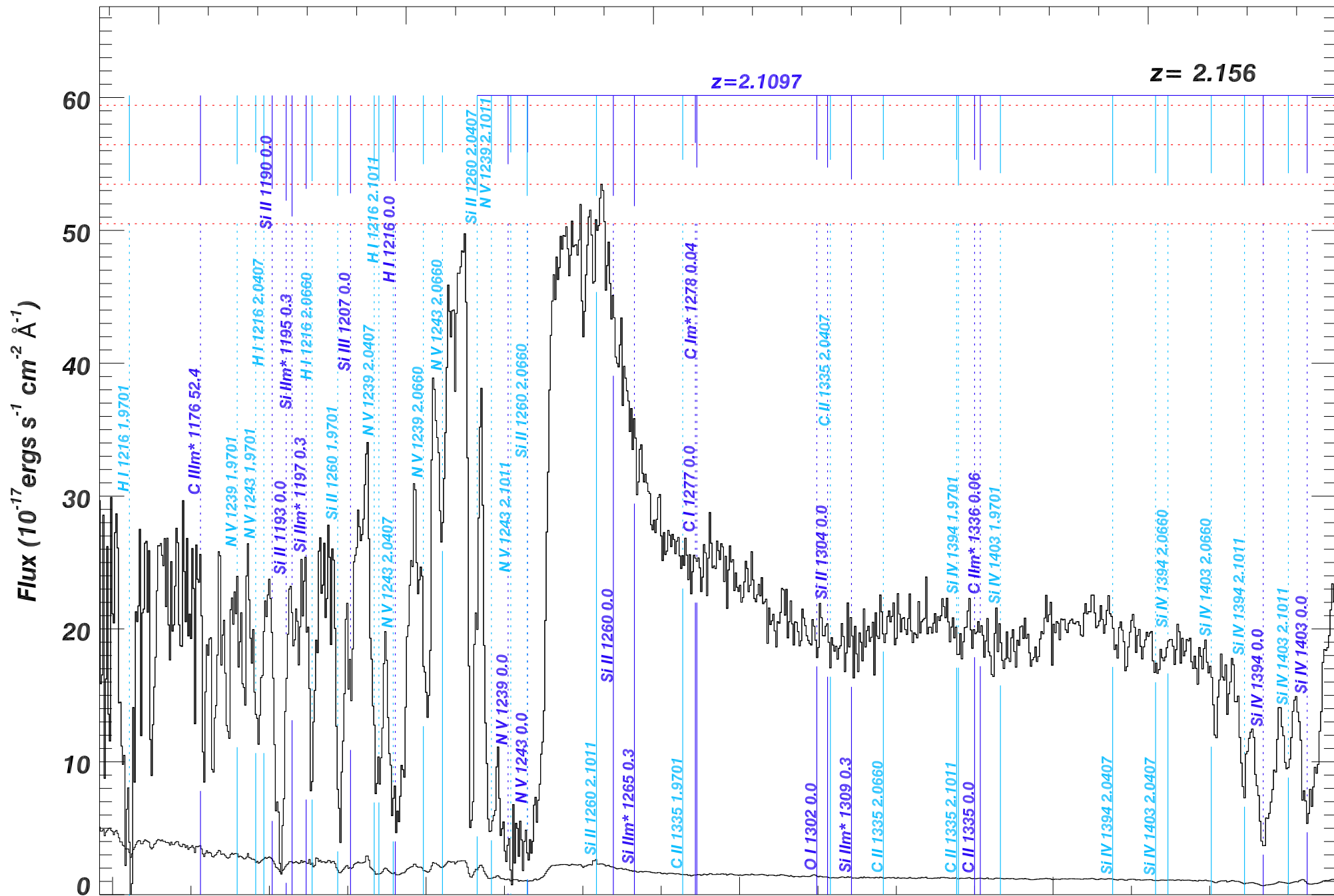
3600

3800

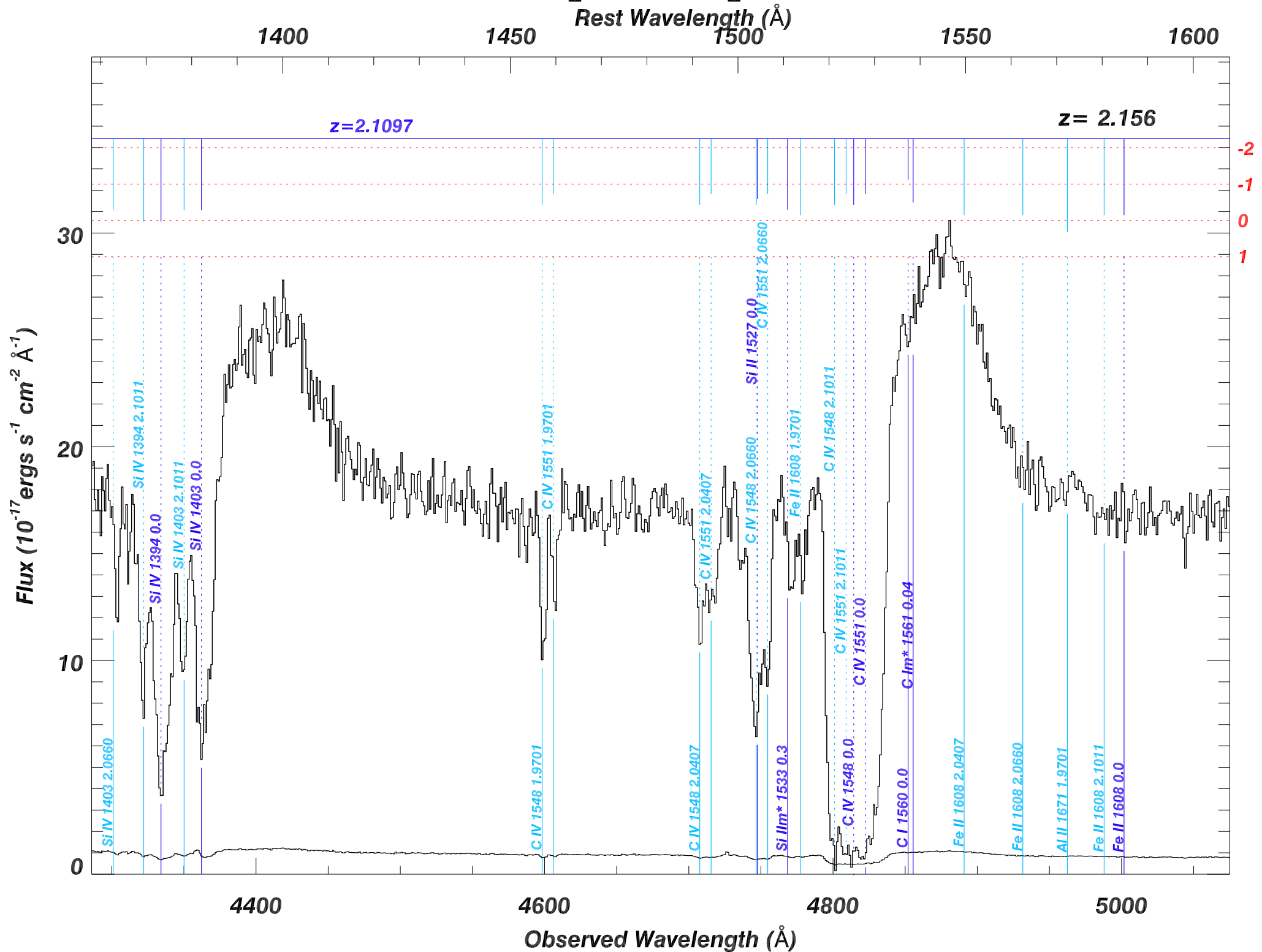
4000

4200

Observed Wavelength (\AA)



SDSS_J1055+4042_MJD55630



SDSS_J1055+4042_MJD55630

Rest Wavelength (\AA)

1600

1650

1700

1750

1800

$z=2.1097$

$z=2.156$

Flux ($10^{-17} \text{ ergs s}^{-1} \text{ cm}^{-2} \text{ \AA}^{-1}$)

20

15

5

0

-2
-1
0
1

5000

5200

5400

5600

Observed Wavelength (\AA)

Fe II 1608 2.1011

Fe II 1608 0.0

Al II 1671 2.0407

Al II 1671 2.0660

C I m* 1657 0.04

C I 1657 0.0

Al II 1671 2.1011

Al II 1671 0.0

Al I 1766 0.0

Al III 1855 1.9701

Al III 1863 1.9701

Al III 1855 2.0407

Al III 1863 2.0407

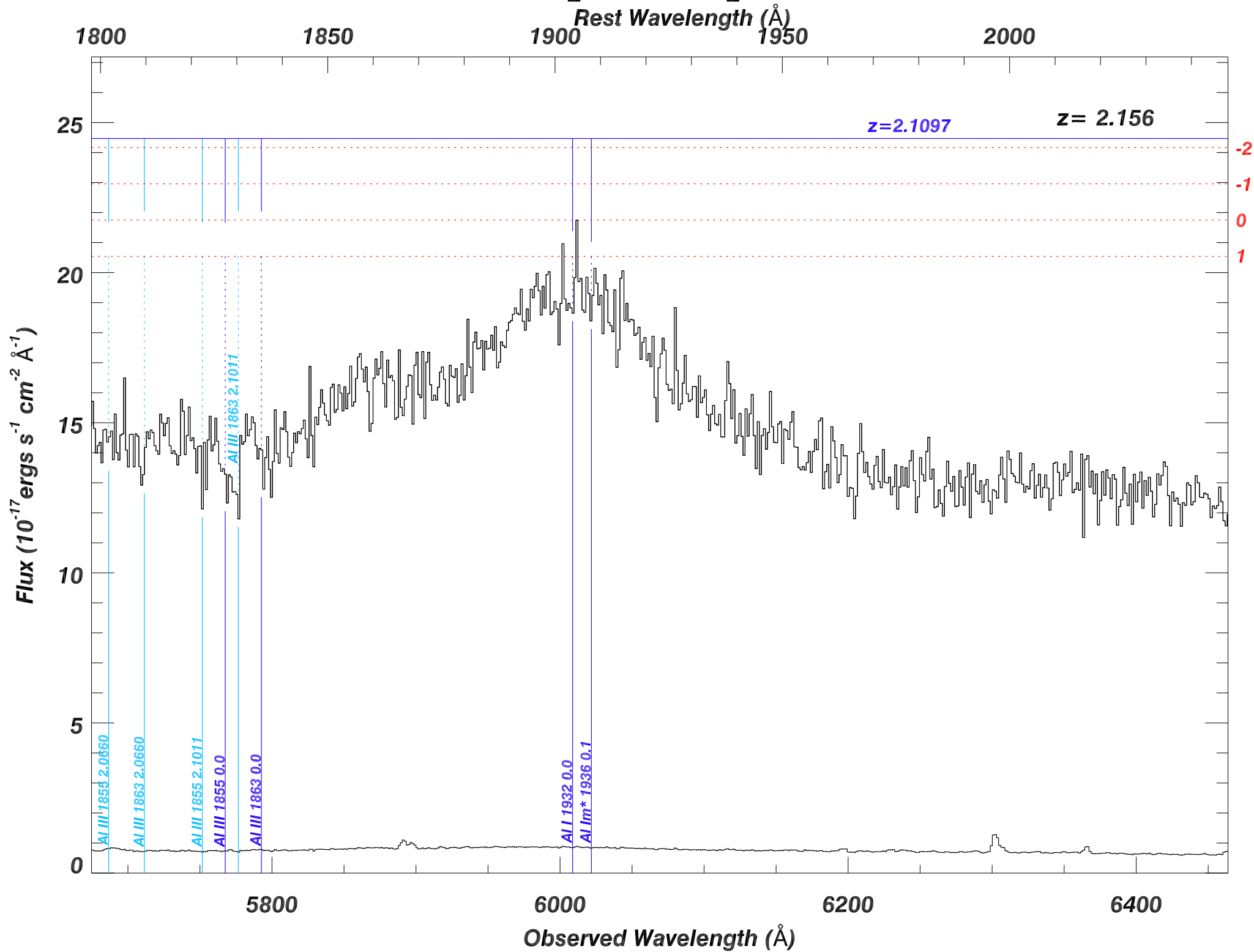
Al III 1855 2.0660

Al III 1863 2.0660

Al III 1855 2.1011

Al III 1855 0.0

SDSS_J1055+4042_MJD55630



SDSS_J1055+4042_MJD55630

Rest Wavelength (\AA)

2050

2100

2150

2200

2250

$z=2.1097$

$z = 2.156$

Flux ($10^{-17} \text{ ergs s}^{-1} \text{ cm}^{-2} \text{ \AA}^{-1}$)

15

10

5

0

-2

-1

0

1

6400

6600

6800

7000

Observed Wavelength (\AA)

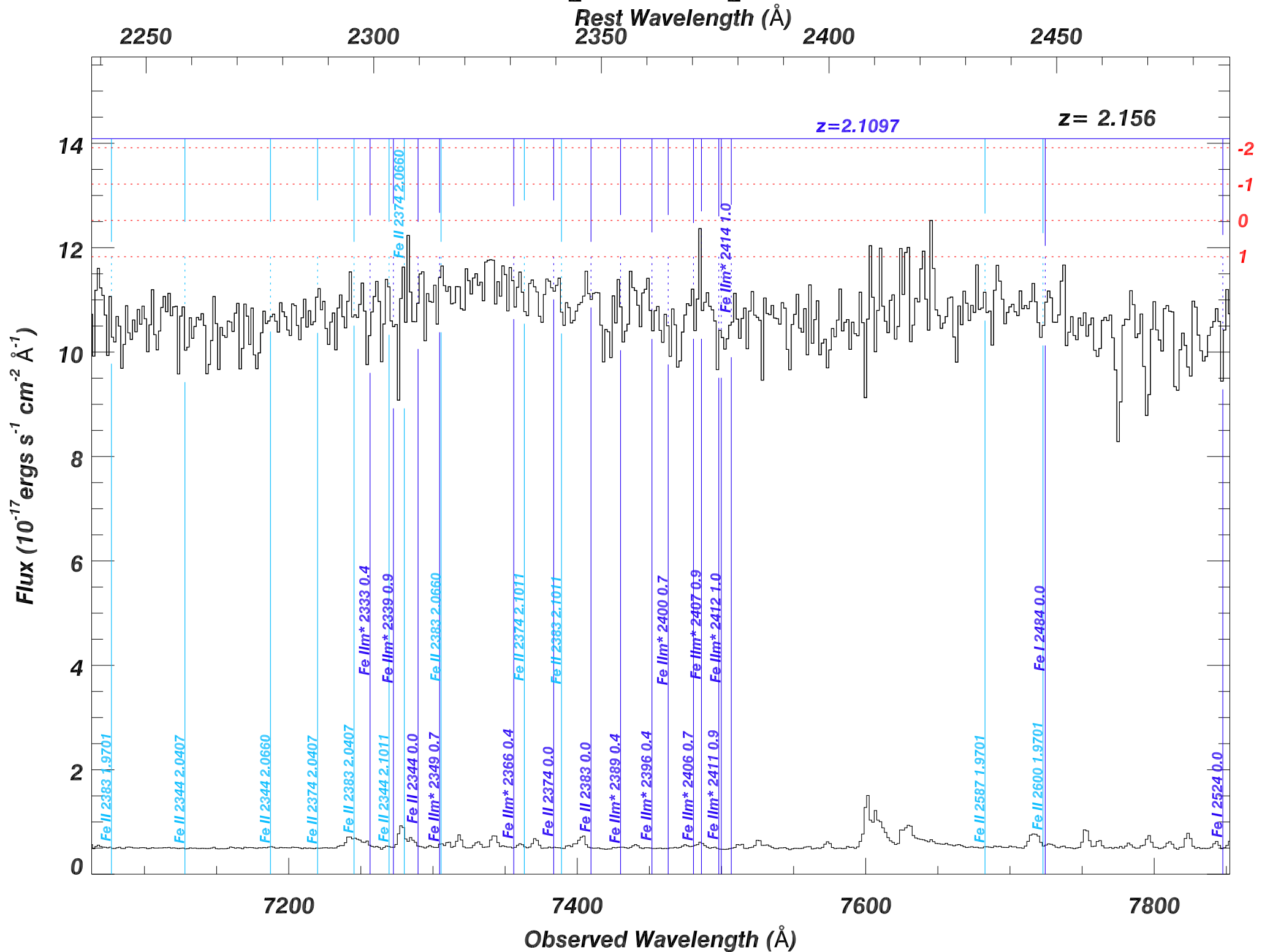
Fe II 2344 1.9701

Fe II 2374 1.9701

Fe II 2383 1.9701

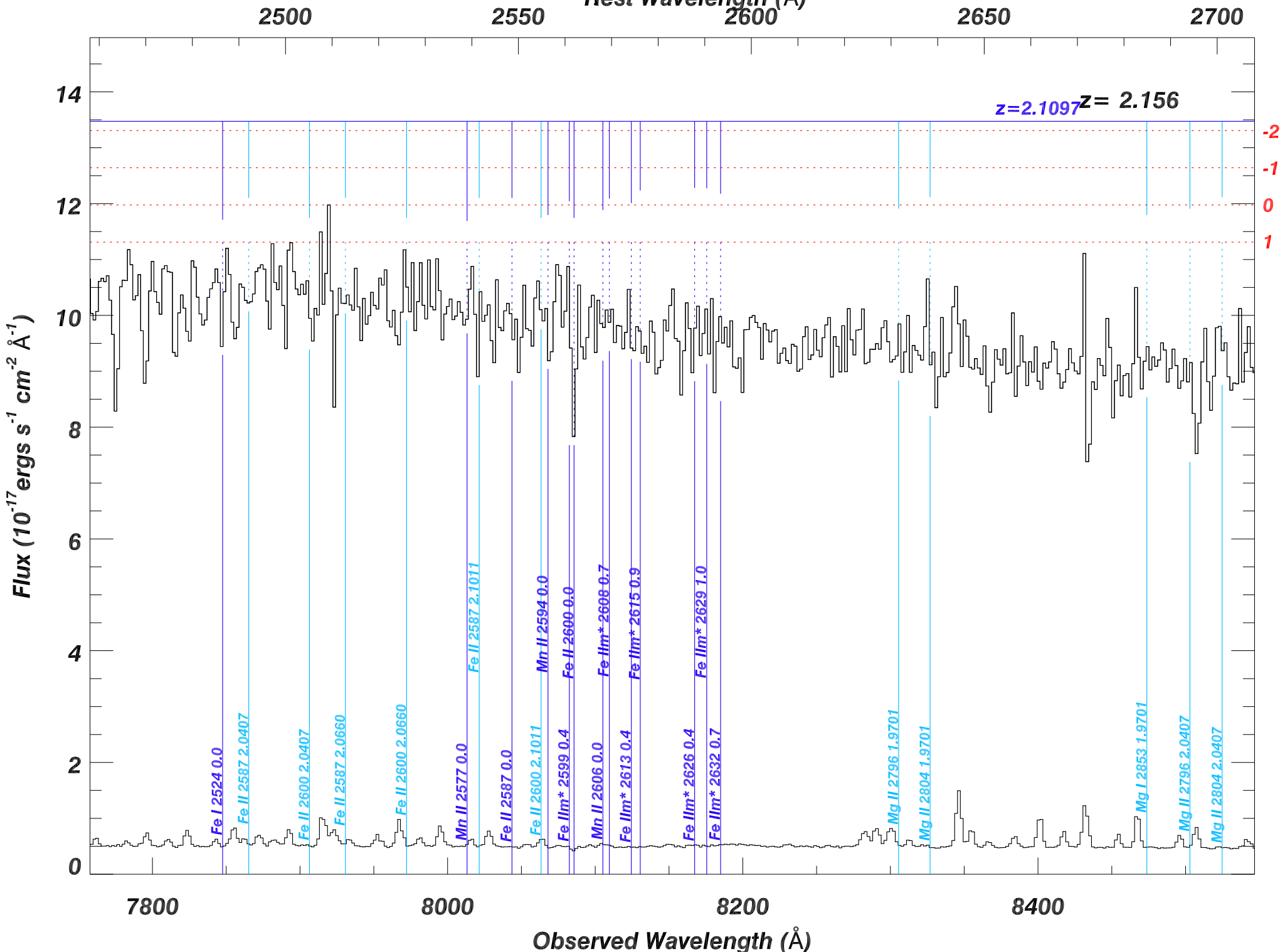
Fe II 2344 2.0407

SDSS_J1055+4042_MJD55630



SDSS_J1055+4042_MJD55630

Rest Wavelength (\AA)



SDSS_J1055+4042_MJD55630

Rest Wavelength (\AA)

2700

2750

2800

2850

2900

Flux ($10^{-17} \text{ ergs s}^{-1} \text{ cm}^{-2} \text{ \AA}^{-1}$)

15

10

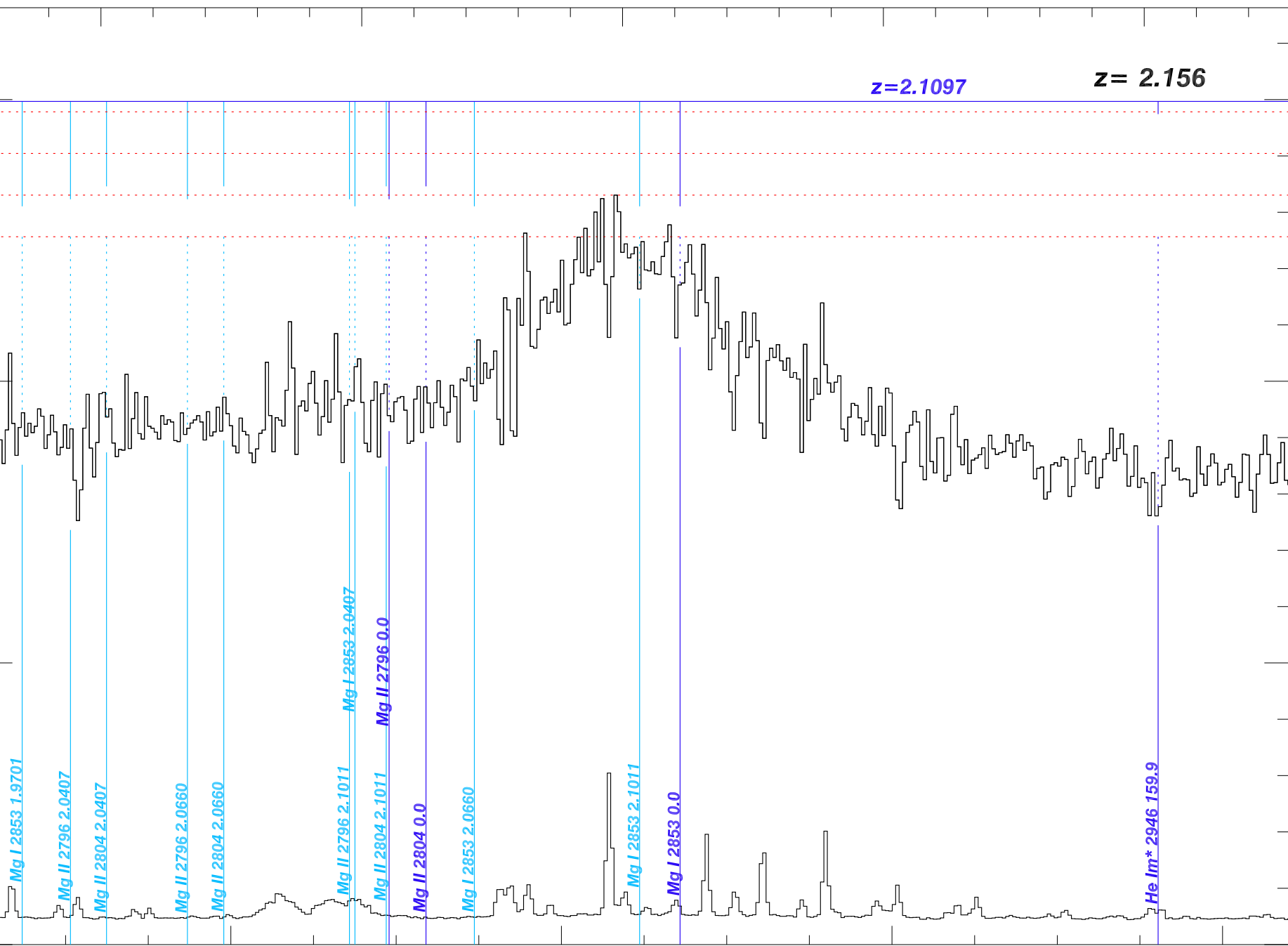
5

0

$z=2.1097$

$z=2.156$

-2
-1
0
1



8600

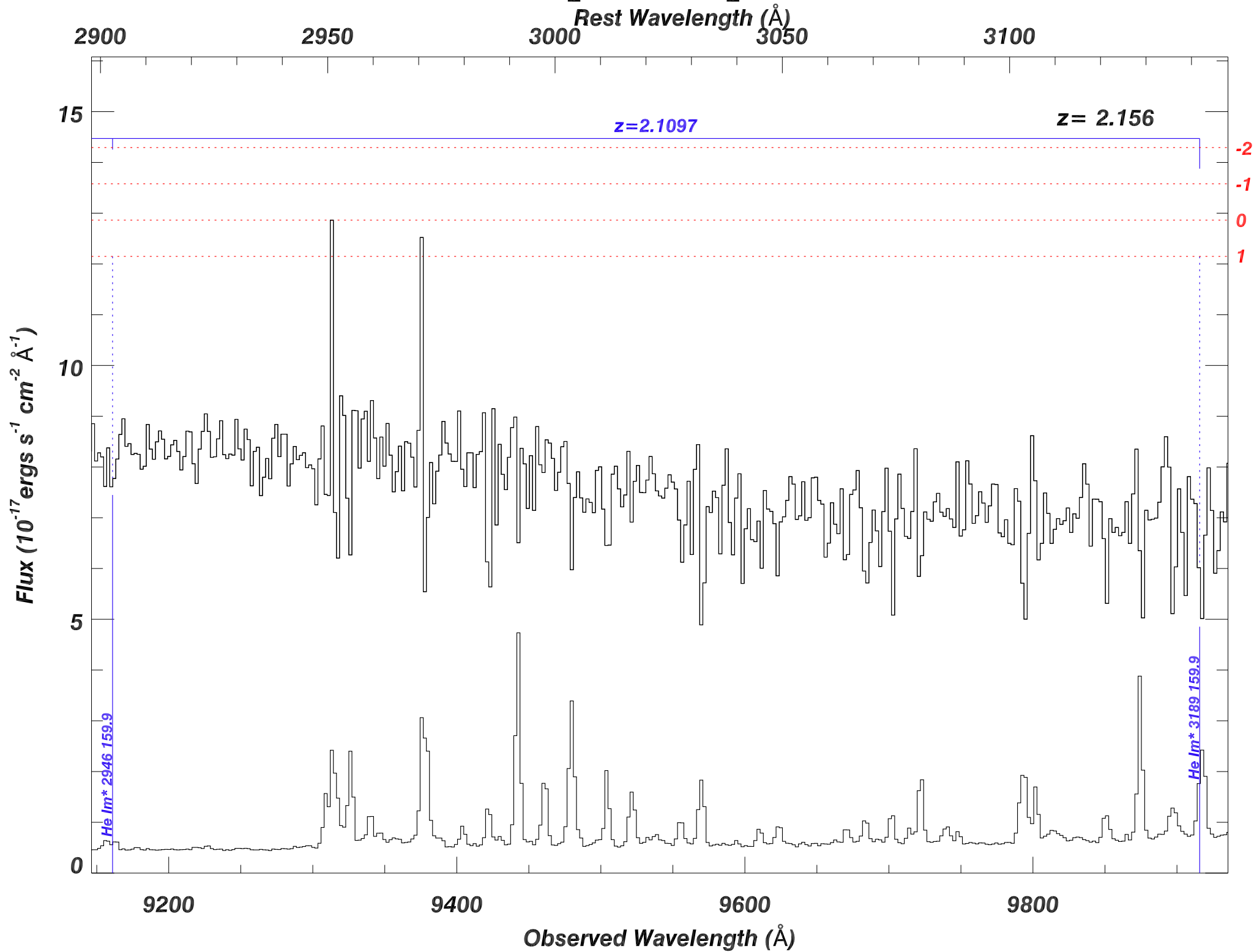
8800

9000

9200

Observed Wavelength (\AA)

SDSS_J1055+4042_MJD55630



SDSS_J1055+4042_MJD55630

Rest Wavelength (\AA)

3200

3300

3400

3500

25 $z=2.1097$

$z = 2.156$

-2
-1
0
1

Flux ($10^{-17} \text{ ergs s}^{-1} \text{ cm}^{-2} \text{ \AA}^{-1}$)

20

15

10

5

0

He I m* 3189.159.9

1.00×10^4

1.02×10^4

1.04×10^4

1.06×10^4

1.08×10^4

1.10×10^4

Observed Wavelength (\AA)

