

SDSS_J0859+4649_MJD55893

Rest Wavelength (\AA)

1500

2000

2500

3000

$z = 2.352$

Flux (10^{-17} ergs s^{-1} cm^{-2} \AA^{-1})

100

80

60

40

20

0

4000

5000

6000

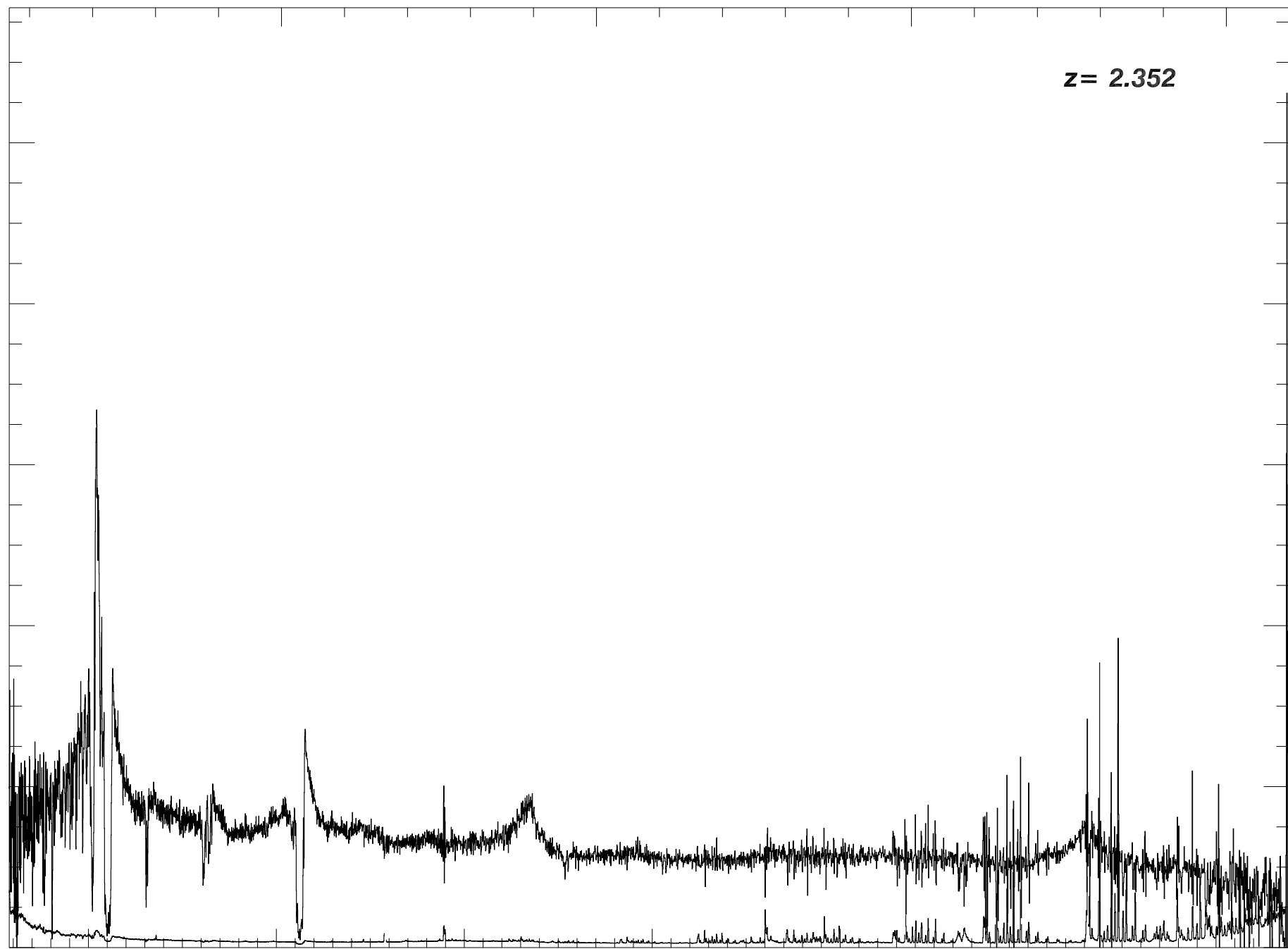
7000

8000

9000

10000

Observed Wavelength (\AA)



SDSS_J0859+4649_MJD55893

Rest Wavelength (Å)

1100

1150

1200

1250

1300

Flux (10^{-17} ergs s^{-1} cm^{-2} \AA^{-1})

80

60

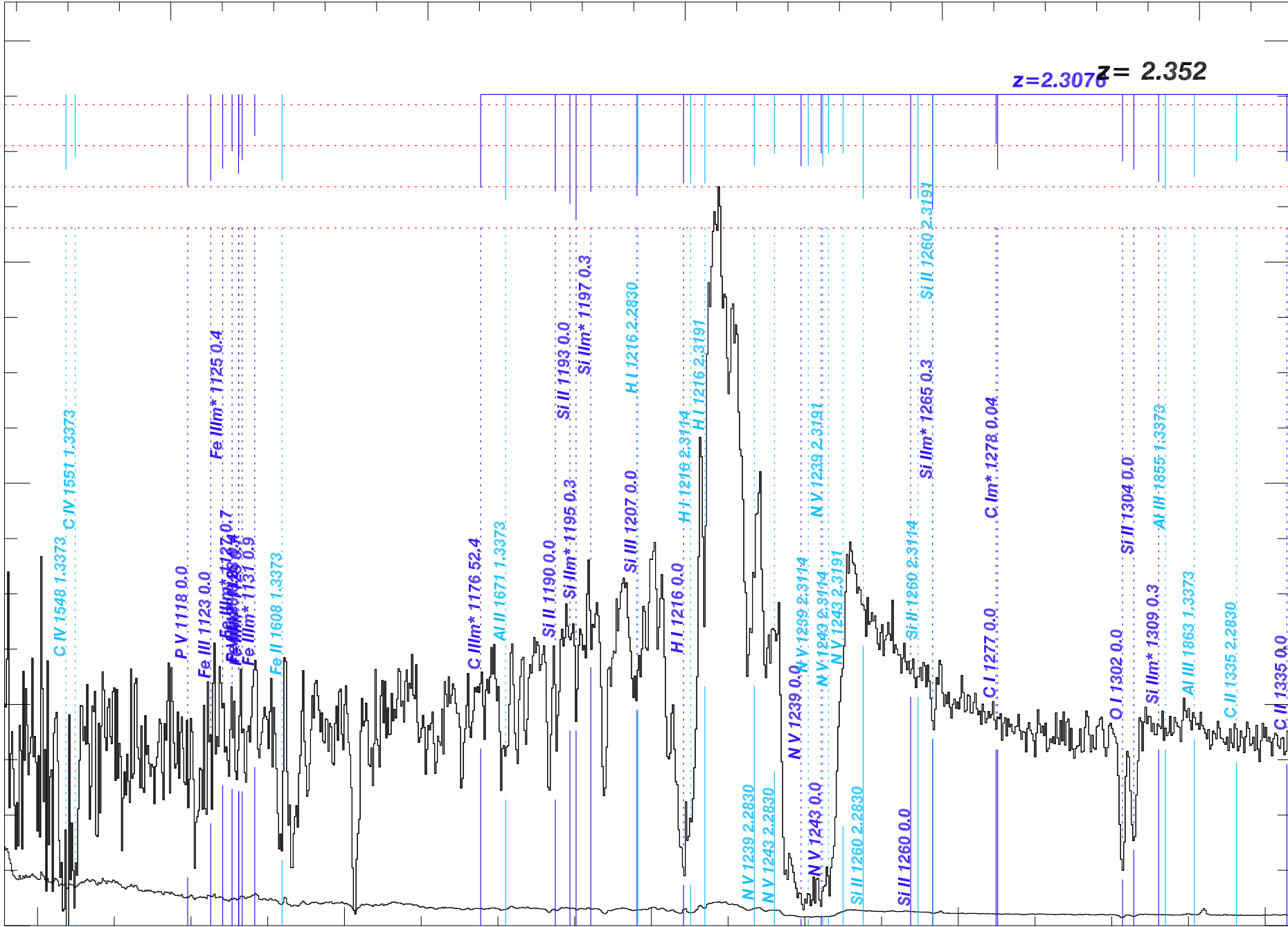
40

20

0

-2
-1
0
1

$z=2.3076$ $z=2.352$



3600

3800

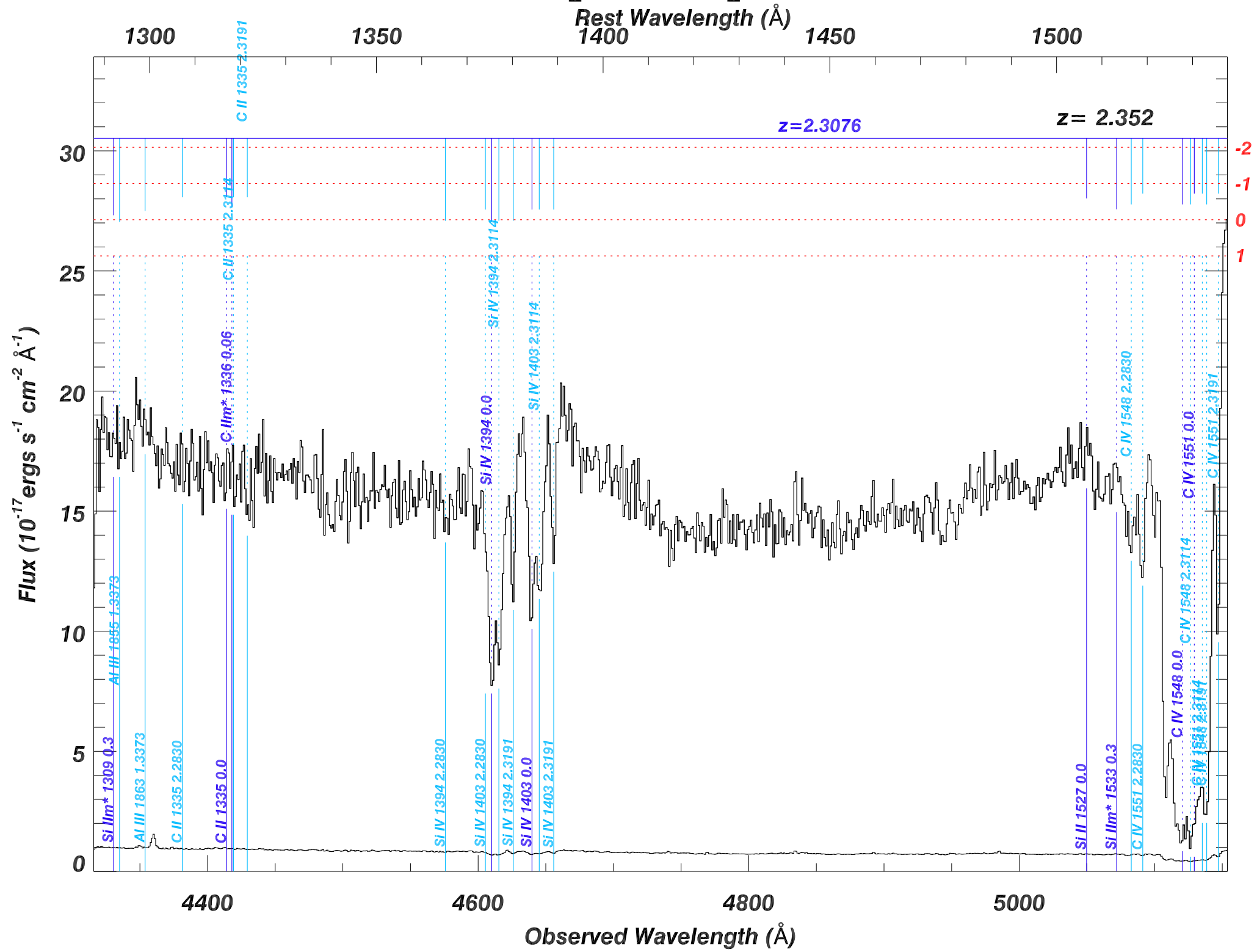
4000

4200

4400

Observed Wavelength (Å)

SDSS_J0859+4649_MJD55893



SDSS_J0859+4649_MJD55893

Rest Wavelength (\AA)

1550

1600

1650

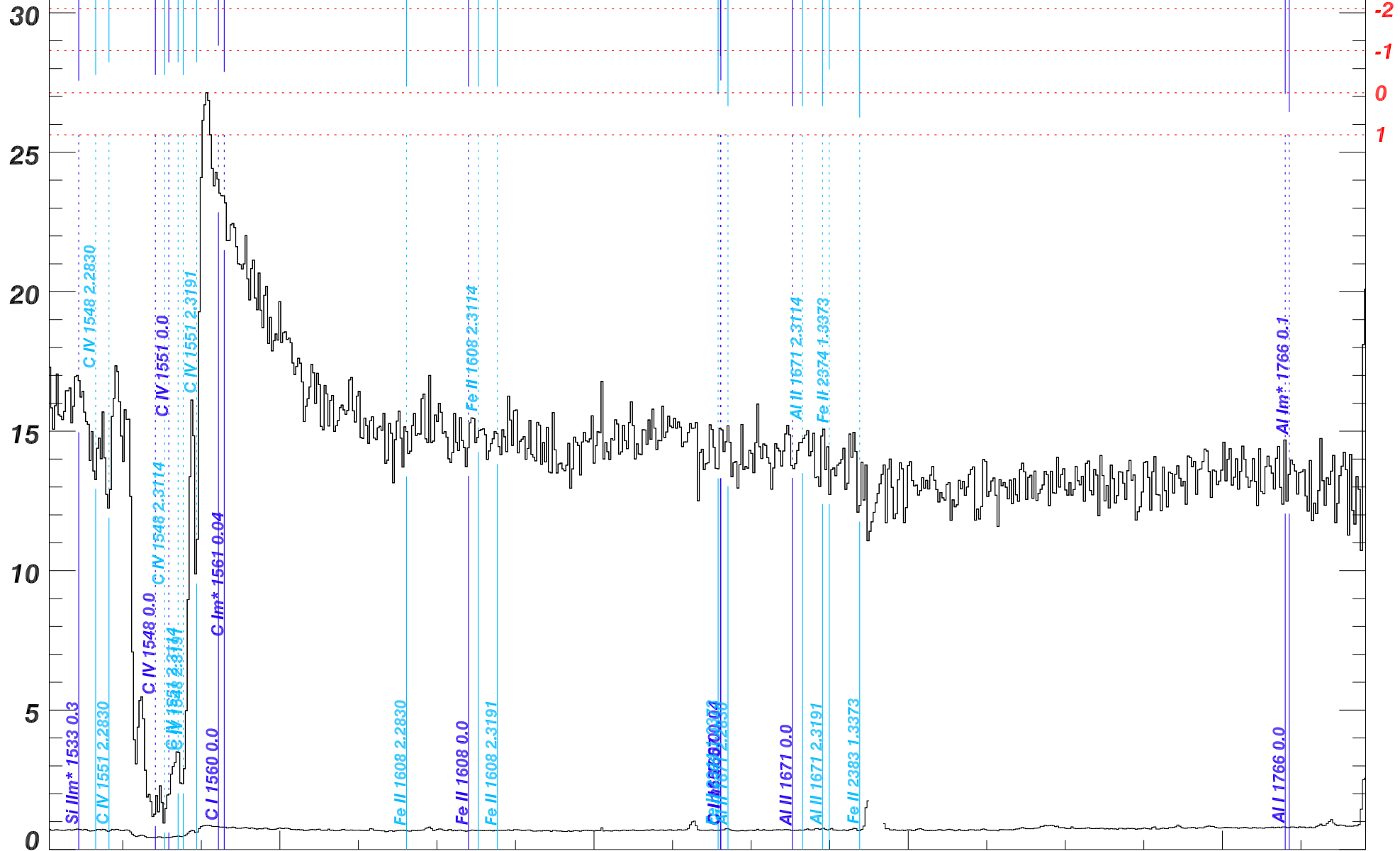
1700

1750

$z=2.3076$

$z=2.352$

Flux ($10^{-17} \text{ ergs s}^{-1} \text{ cm}^{-2} \text{ \AA}^{-1}$)



5200

5400

5600

5800

Observed Wavelength (\AA)

SDSS_J0859+4649_MJD55893

Rest Wavelength (\AA)

1750

1800

1850

1900

1950

$z=2.3076$

$z=2.352$

Flux ($10^{-17} \text{ ergs s}^{-1} \text{ cm}^{-2} \text{ \AA}^{-1}$)

25

20

15

10

5

0

-2

-1

0

1

Al I 1766 0.0

Al I m* 1766 0.1

Fe II 2587 1.3373

Fe II 2600 1.3373

Al III 1863 2.2830

Al III 1855 0.0

Al III 1855 2.3191

Al III 1863 2.3114

Al III 1863 2.3191

Al III 1855 2.3114

Al III 1863 0.0

Al I 1932 0.0

Al I m* 1936 0.1

Mg II 2796 1.3373

Mg II 2804 1.3373

5800

6000

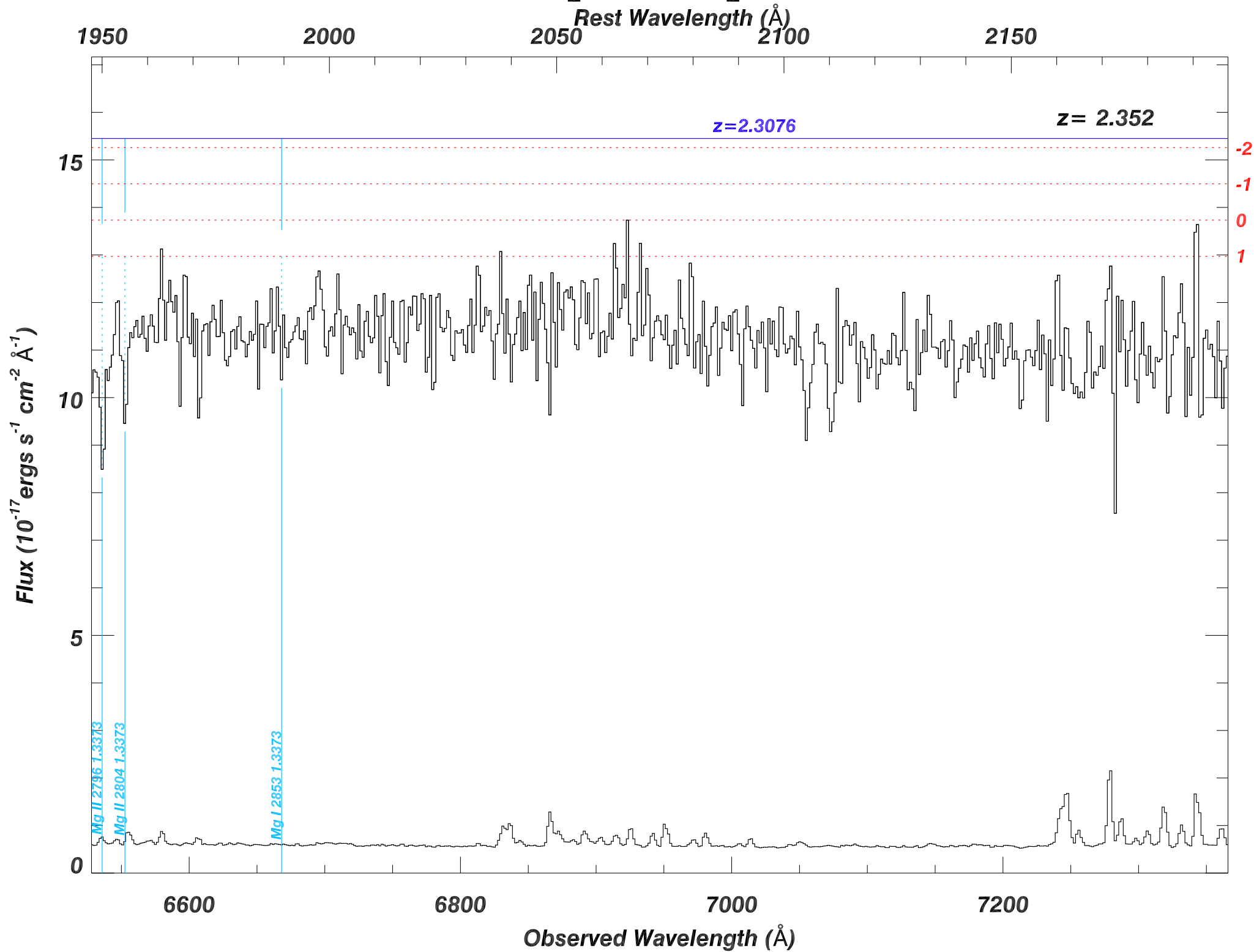
6200

6400

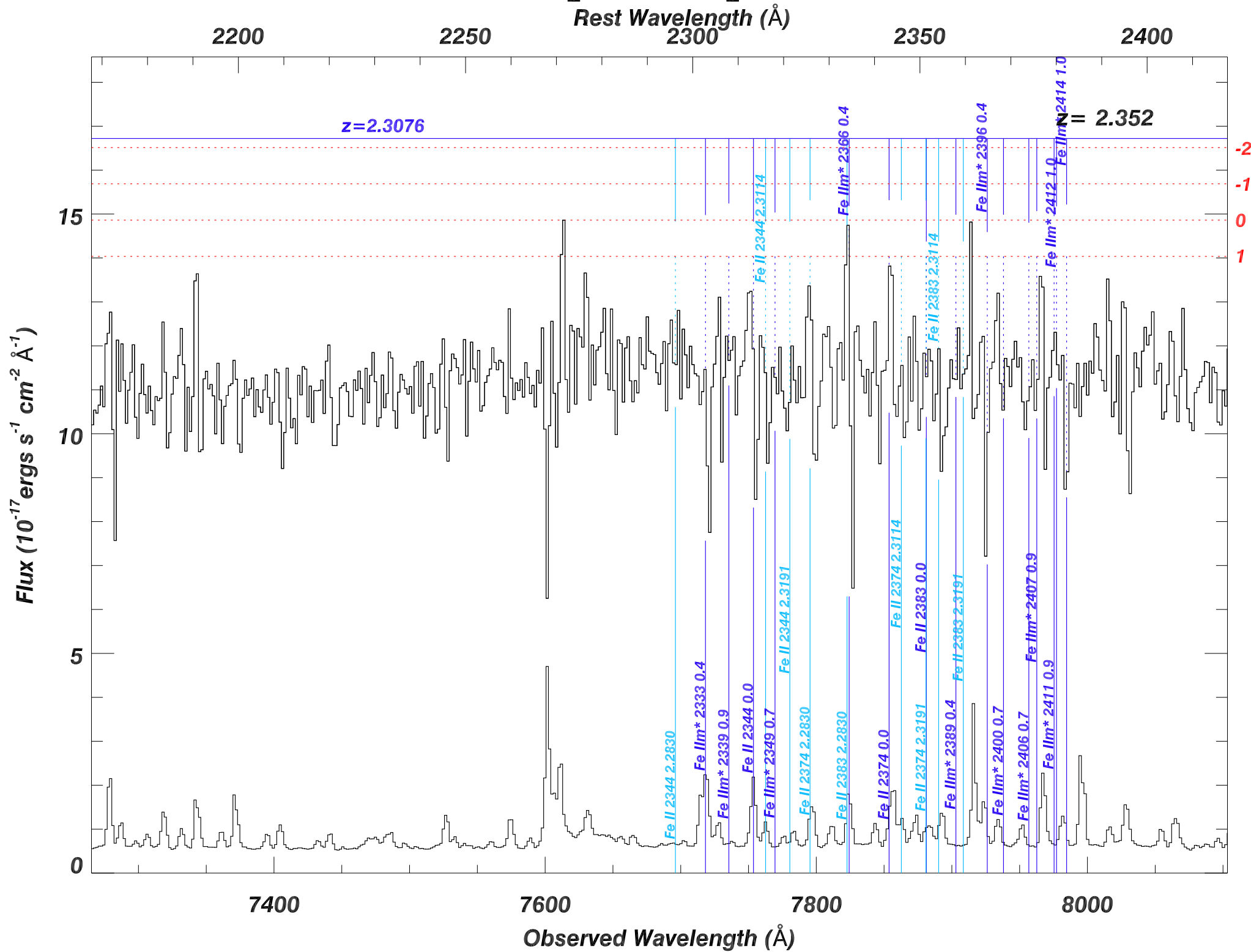
6600

Observed Wavelength (\AA)

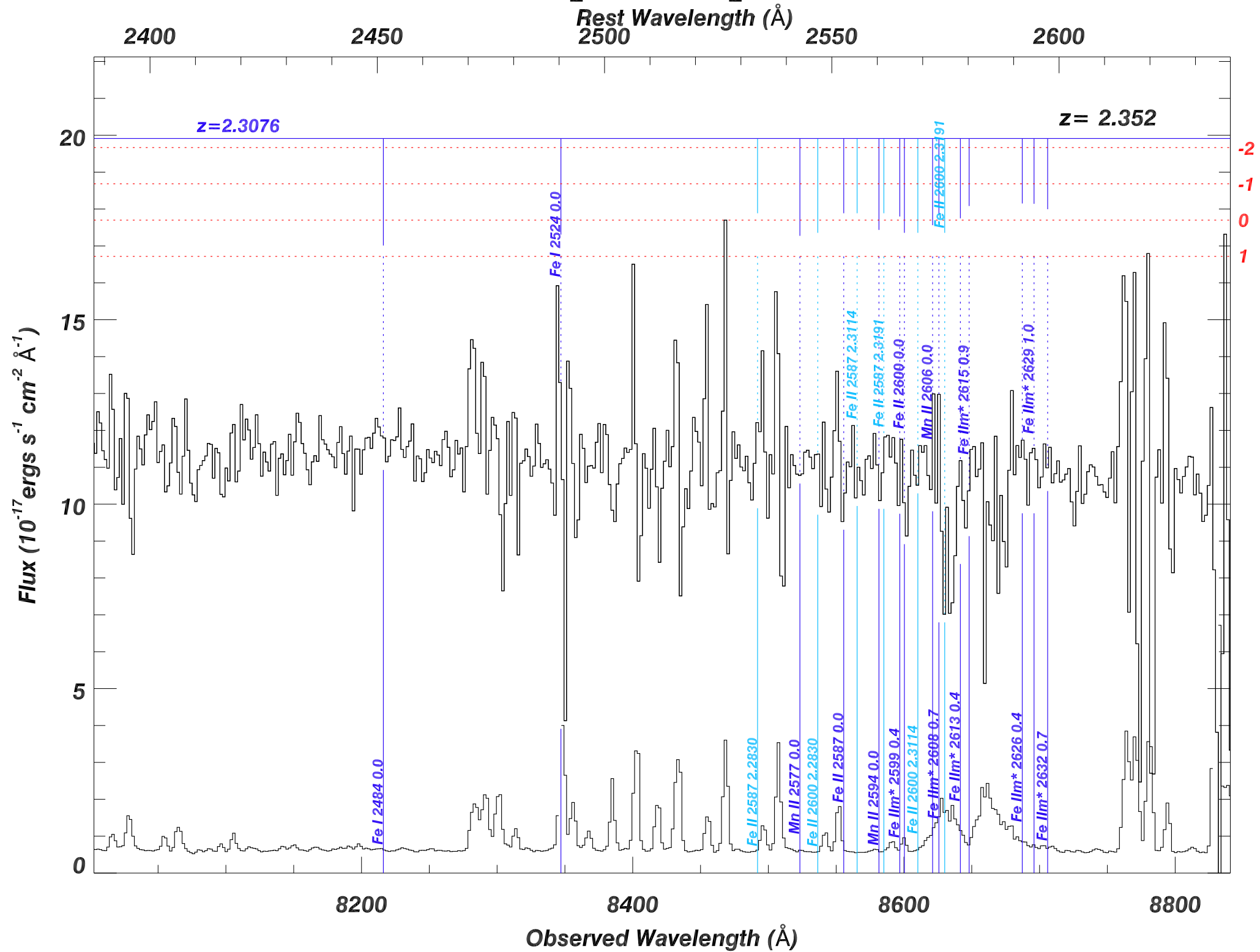
SDSS_J0859+4649_MJD55893



SDSS_J0859+4649_MJD55893

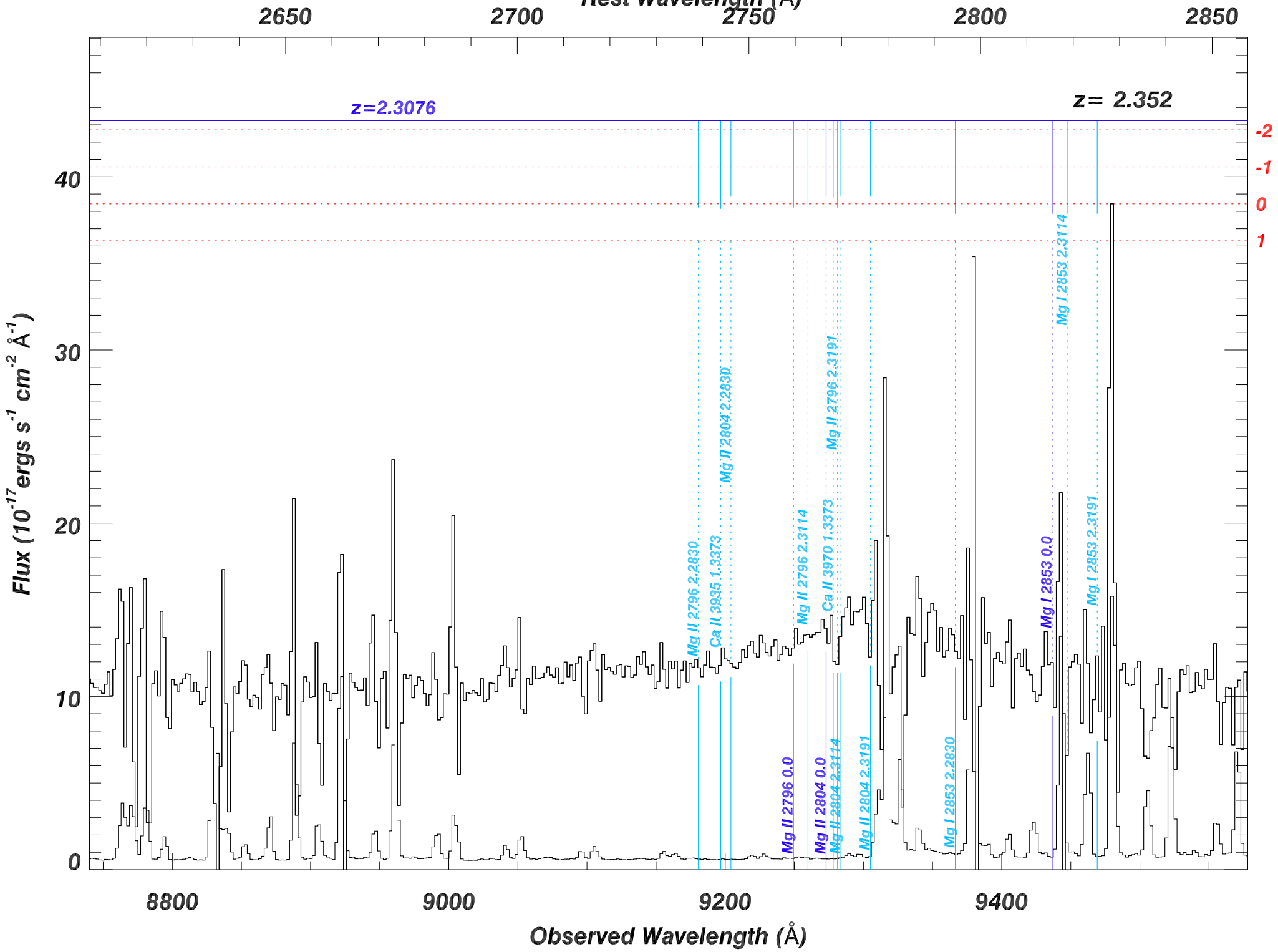


SDSS_J0859+4649_MJD55893



SDSS_J0859+4649_MJD55893

Rest Wavelength (\AA)



SDSS_J0859+4649_MJD55893

Rest Wavelength (\AA)

2850

2900

2950

3000

3050

$z=2.3076$

$z=2.352$

Flux ($10^{-17} \text{ ergs s}^{-1} \text{ cm}^{-2} \text{ \AA}^{-1}$)

40

30

20

10

0

-2

-1

0

1

He I m* 2946.159.9

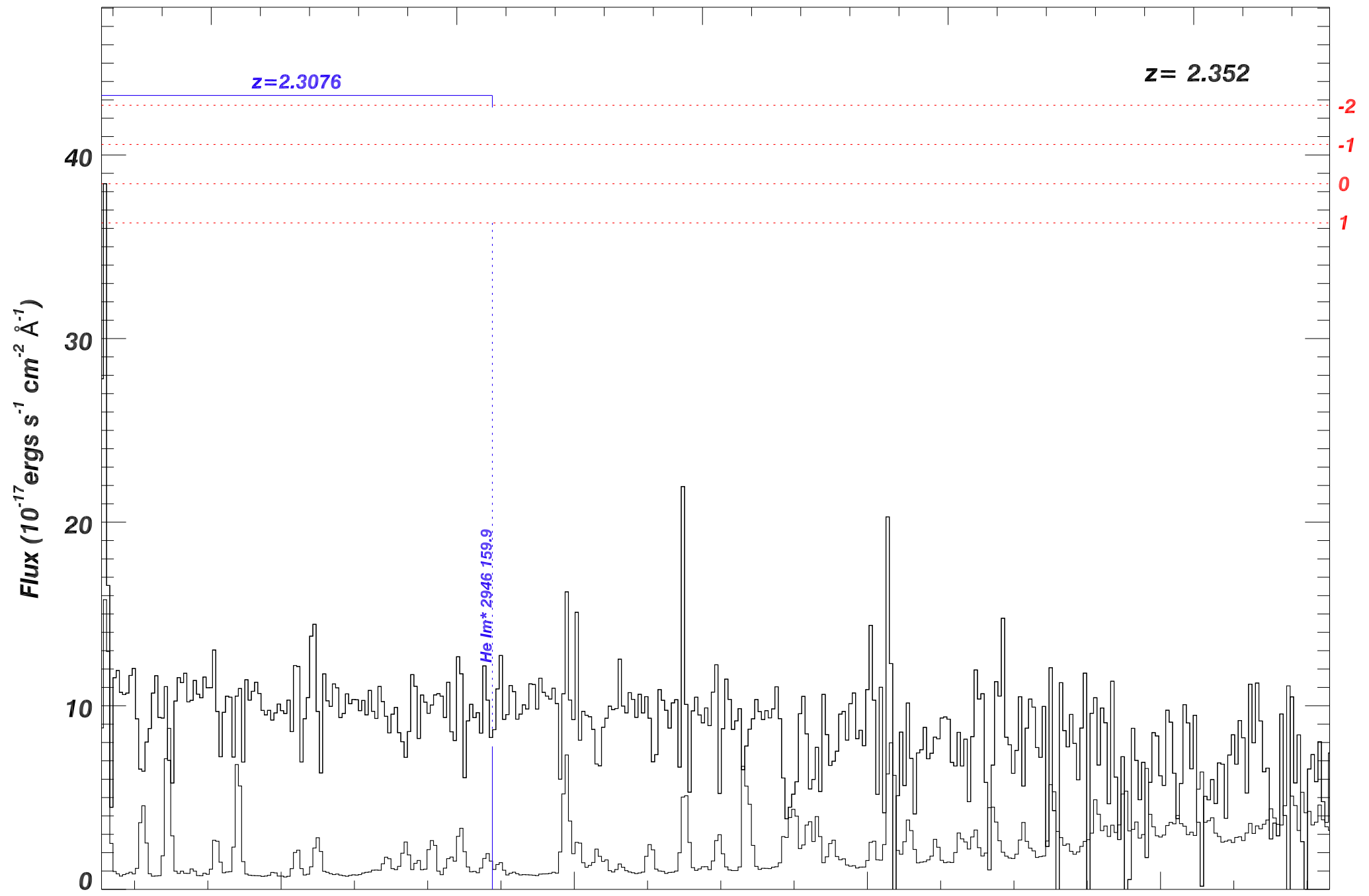
9.60×10^3

9.80×10^3

1.00×10^4

1.02×10^4

Observed Wavelength (\AA)



SDSS_J0859+4649_MJD55893

Rest Wavelength (\AA)

3100

3200

3300

3400

z = 2.352

Flux ($10^{-17} \text{ ergs s}^{-1} \text{ cm}^{-2} \text{ \AA}^{-1}$)

120

100

80

60

40

20

0

-2

-1

0

1

1.04×10^4

1.06×10^4

1.08×10^4

1.10×10^4

1.12×10^4

1.14×10^4

Observed Wavelength (\AA)

