

SDSS_J1653+4635_MJD56452

Rest Wavelength (\AA)

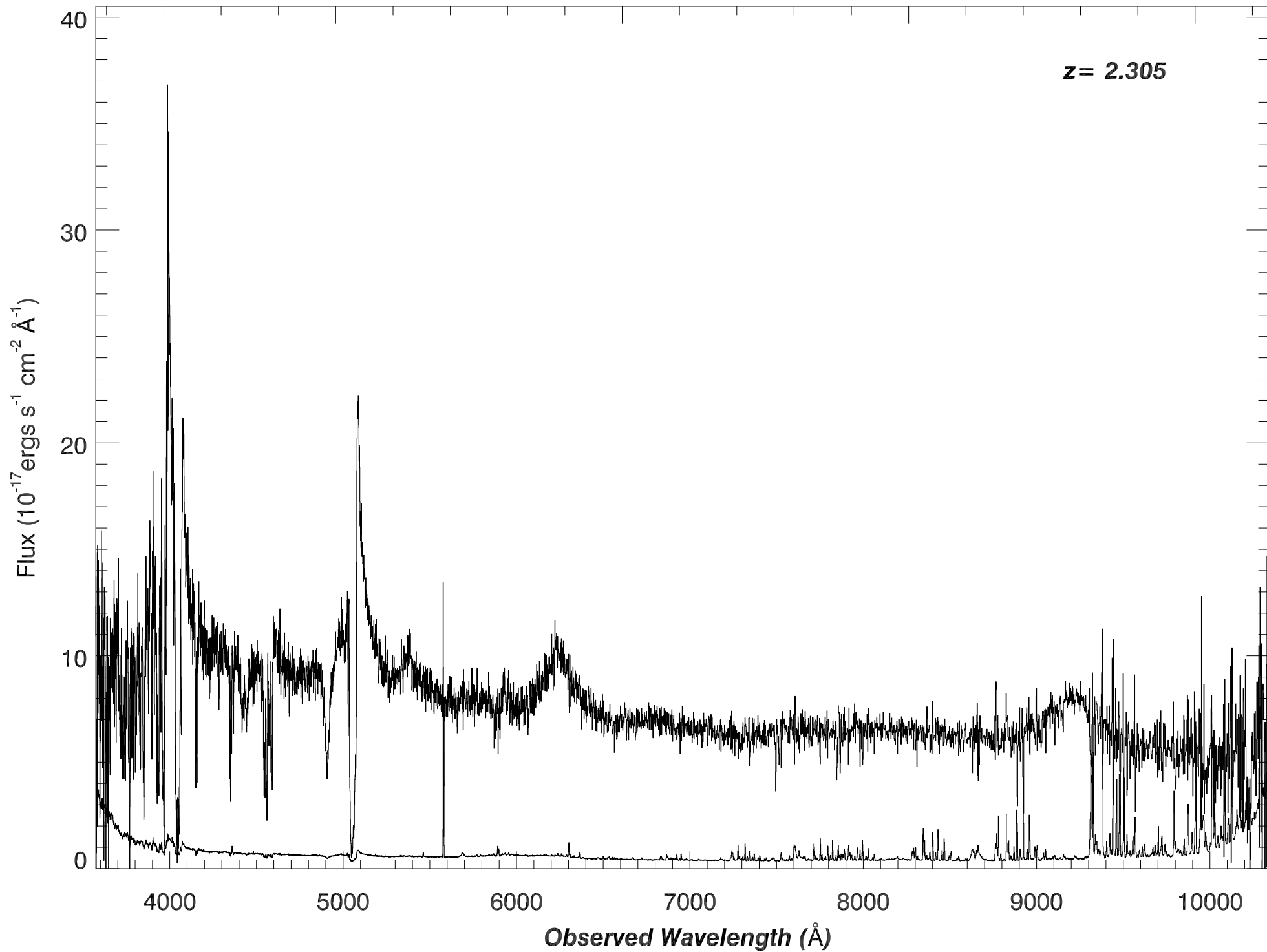
1500

2000

2500

3000

$z = 2.305$



SDSS_J1653+4635_MJD56452

Rest Wavelength (Å)

1100

1150

1200

1250

1300

Flux (10^{-17} ergs s^{-1} cm^{-2} Å $^{-1}$)

40

30

20

10

0

-2

-1

0

1

z=2.2720

z= 2.305

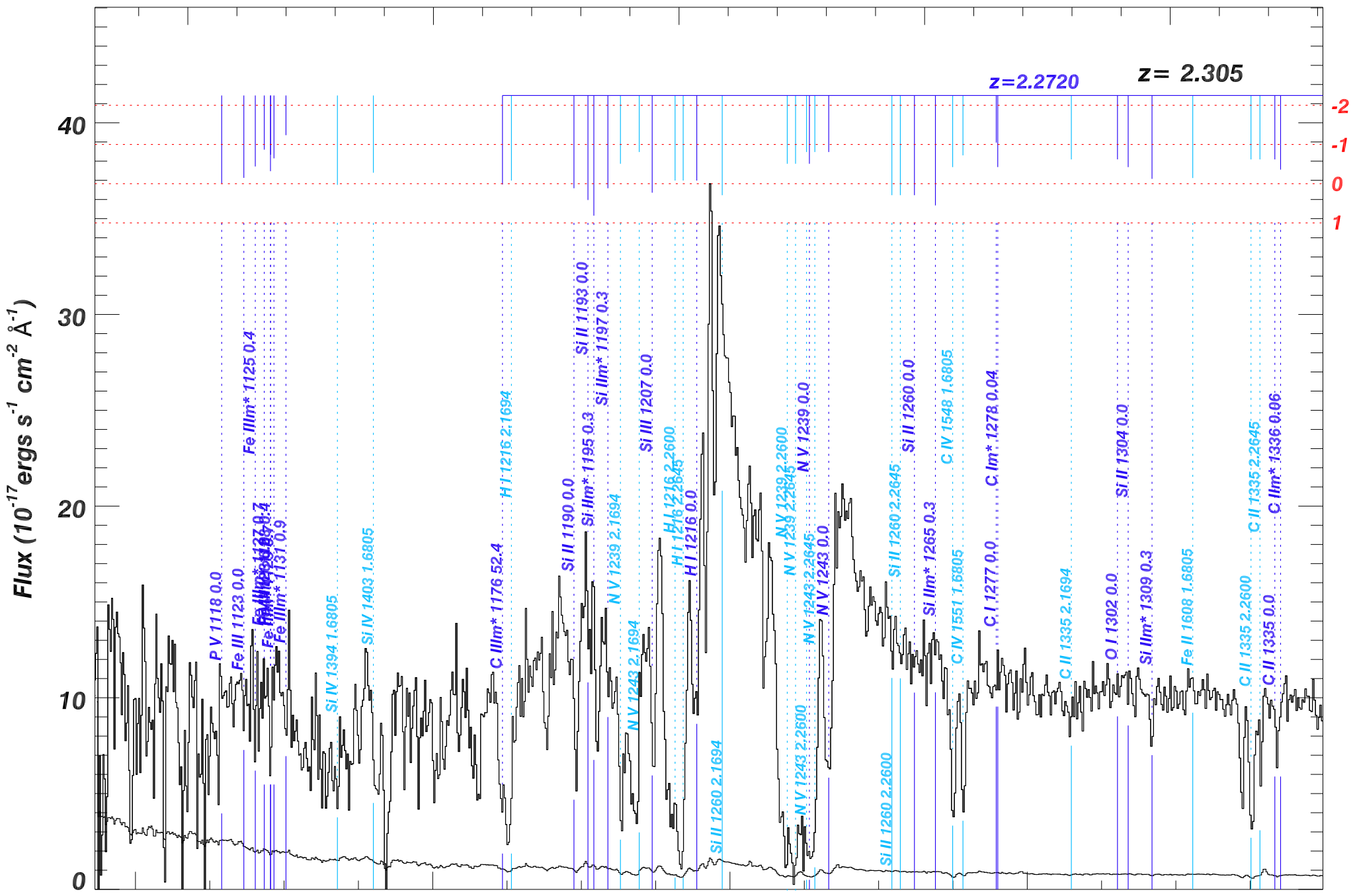
3600

3800

4000

4200

Observed Wavelength (Å)



P.V.1118 0.0

Fe III 1123 0.0

Fe III* 1127 0.7

Fe III* 1129 0.4

Fe III* 1131 0.9

Si IV 1394 1.6805

Si IV 1403 1.6805

C III* 1176 52.4

H I 1216 2.1694

Si II 1190 0.0

Si III* 1195 0.3

Si II 1193 0.0

Si III* 1197 0.3

N V 1243 2.1694

N V 1243 2.1694

Si III 1207 0.0

H I 1216 0.0

H I 1216 2.2645

H I 1216 2.2600

Si III 1260 2.1694

N V 1239 2.2600

N V 1239 2.2645

N V 1239 2.2600

N V 1243 2.2645

N V 1243 0.0

Si III 1260 2.2645

Si II 1260 0.0

Si III* 1265 0.3

C IV 1548 1.6805

C IV 1551 1.6805

C I 1277 0.0

C I* 1278 0.04

C II 1335 2.1694

O I 1302 0.0

Si III* 1309 0.3

Si II 1304 0.0

Fe II 1608 1.6805

C II 1335 2.2600

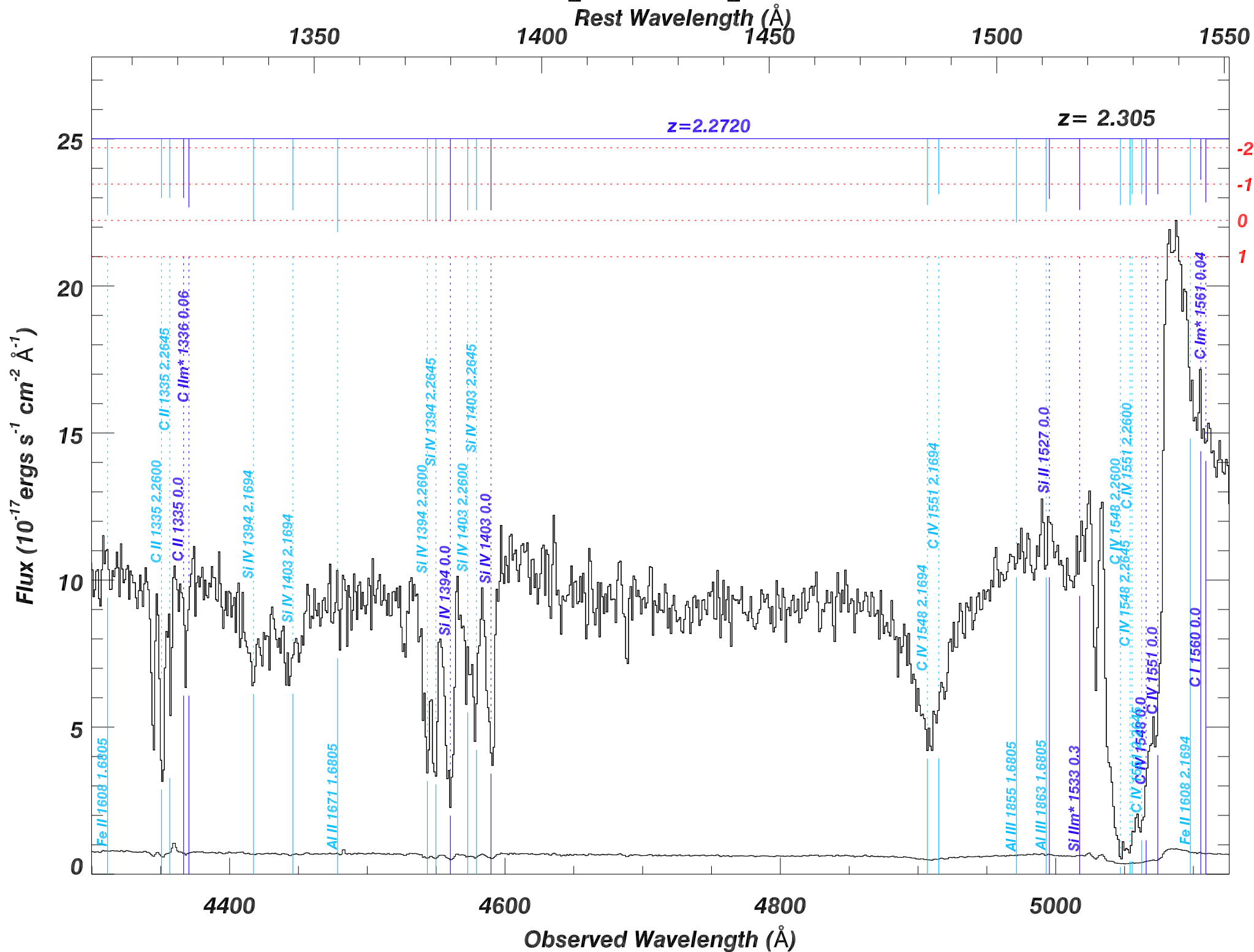
C II 1335 0.0

C II* 1336 0.06

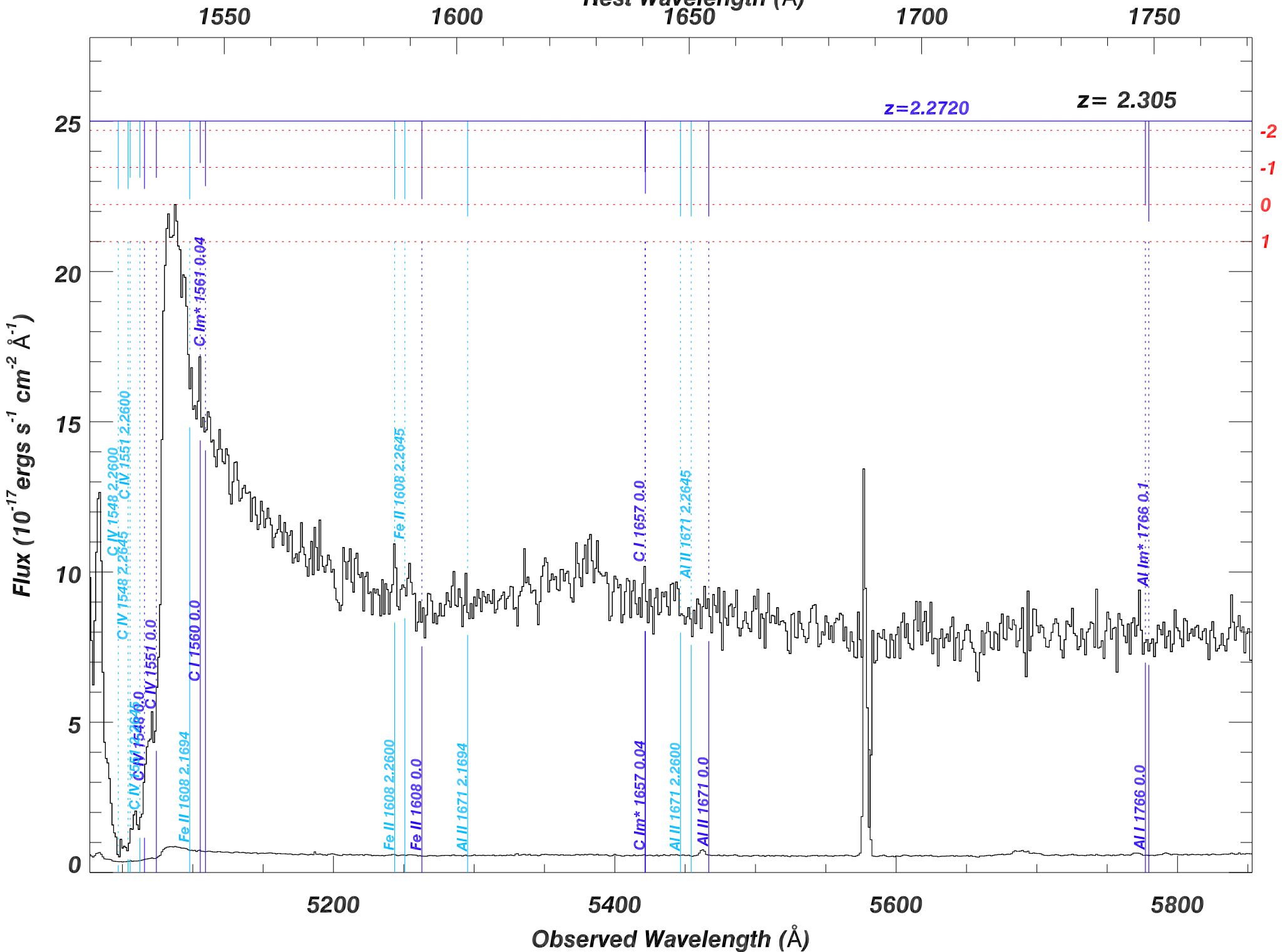
C II* 1335 2.2645

C II* 1336 0.06

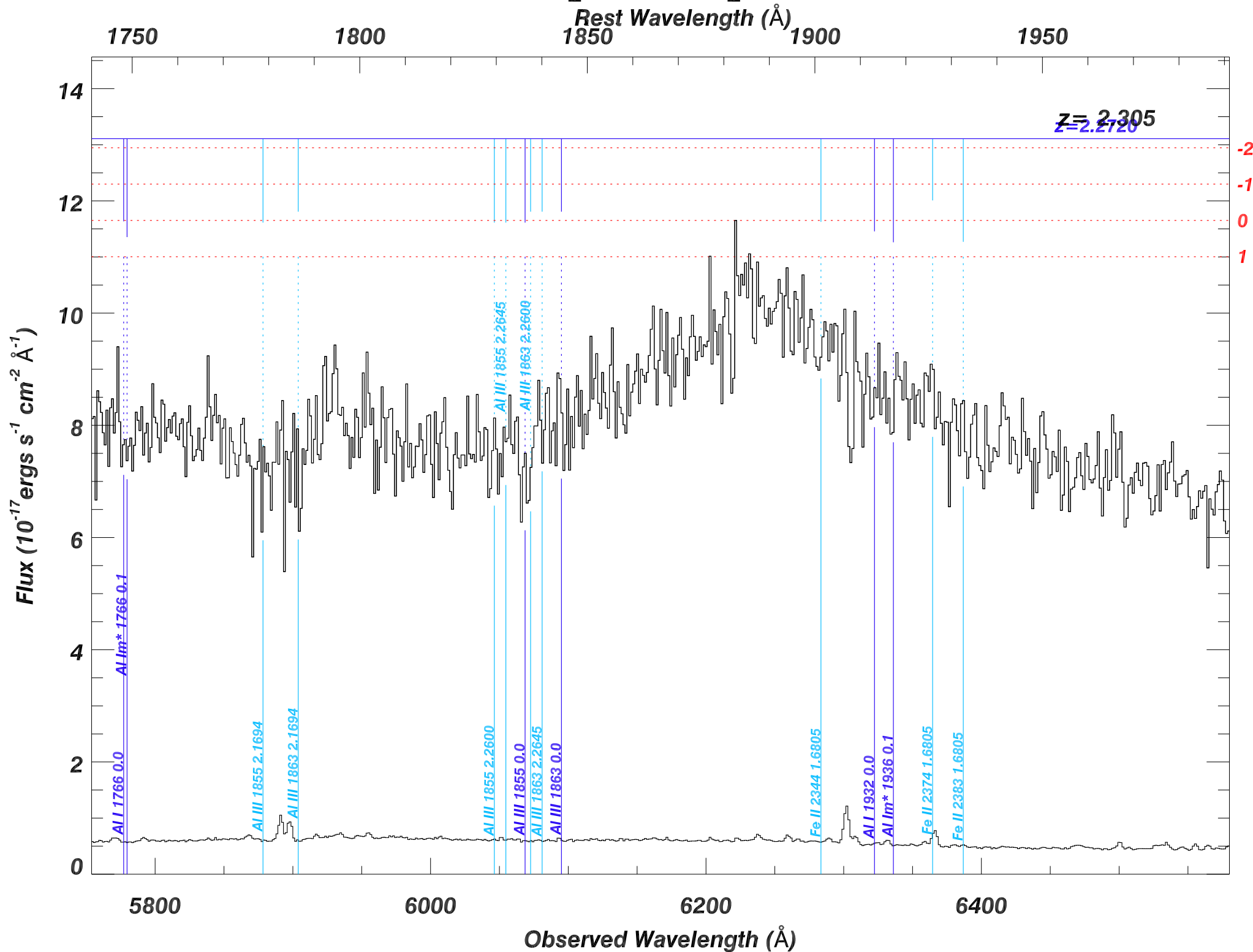
SDSS_J1653+4635_MJD56452



SDSS_J1653+4635_MJD56452

Rest Wavelength (\AA)

SDSS_J1653+4635_MJD56452



SDSS_J1653+4635_MJD56452

Rest Wavelength (\AA)

2000

2050

2100

2150

2200

$z=2.2720$

$z=2.305$

Flux ($10^{-17} \text{ ergs s}^{-1} \text{ cm}^{-2} \text{ \AA}^{-1}$)

10

8

6

4

2

0

-2

-1

0

1

6600

6800

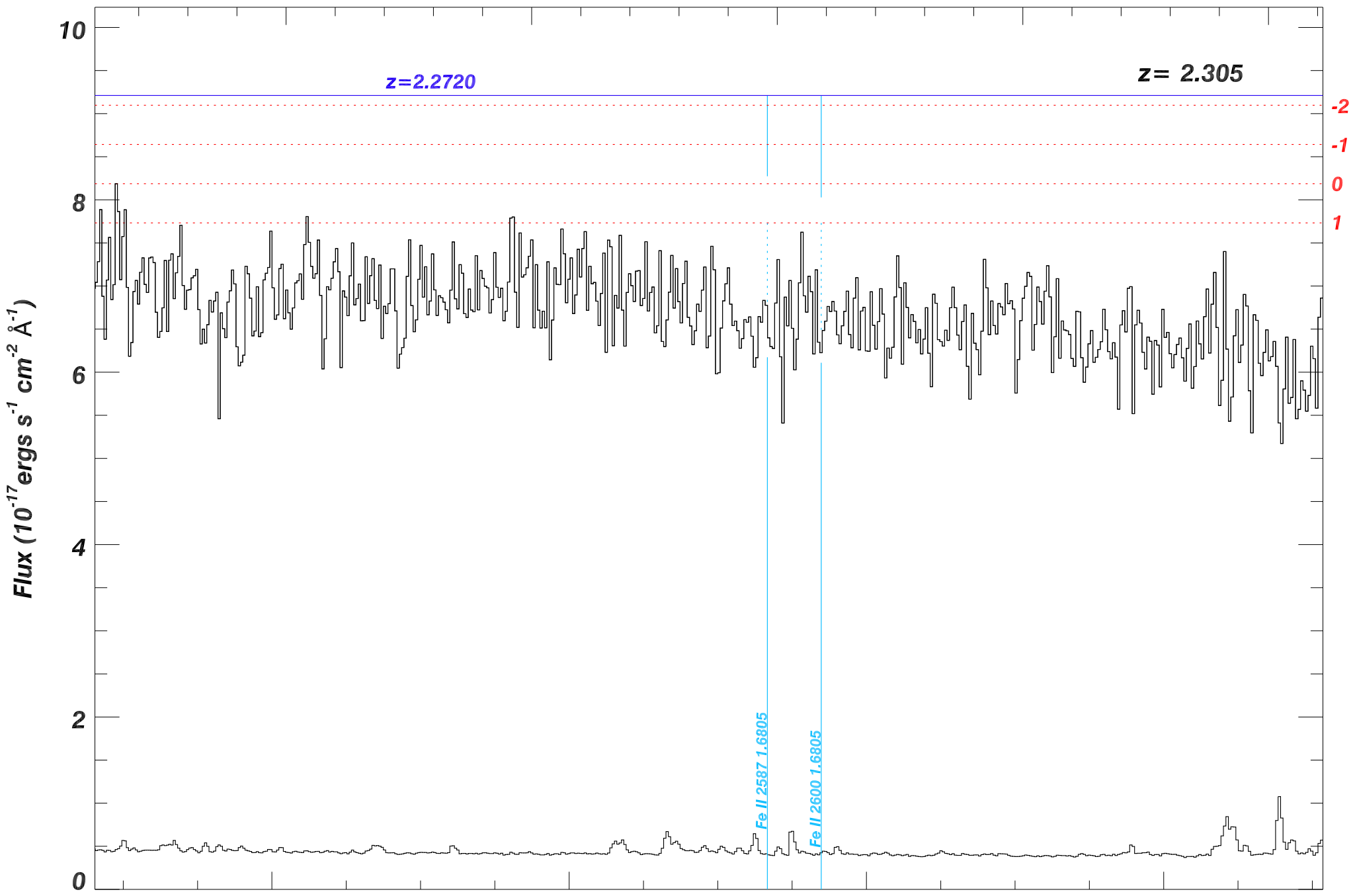
7000

7200

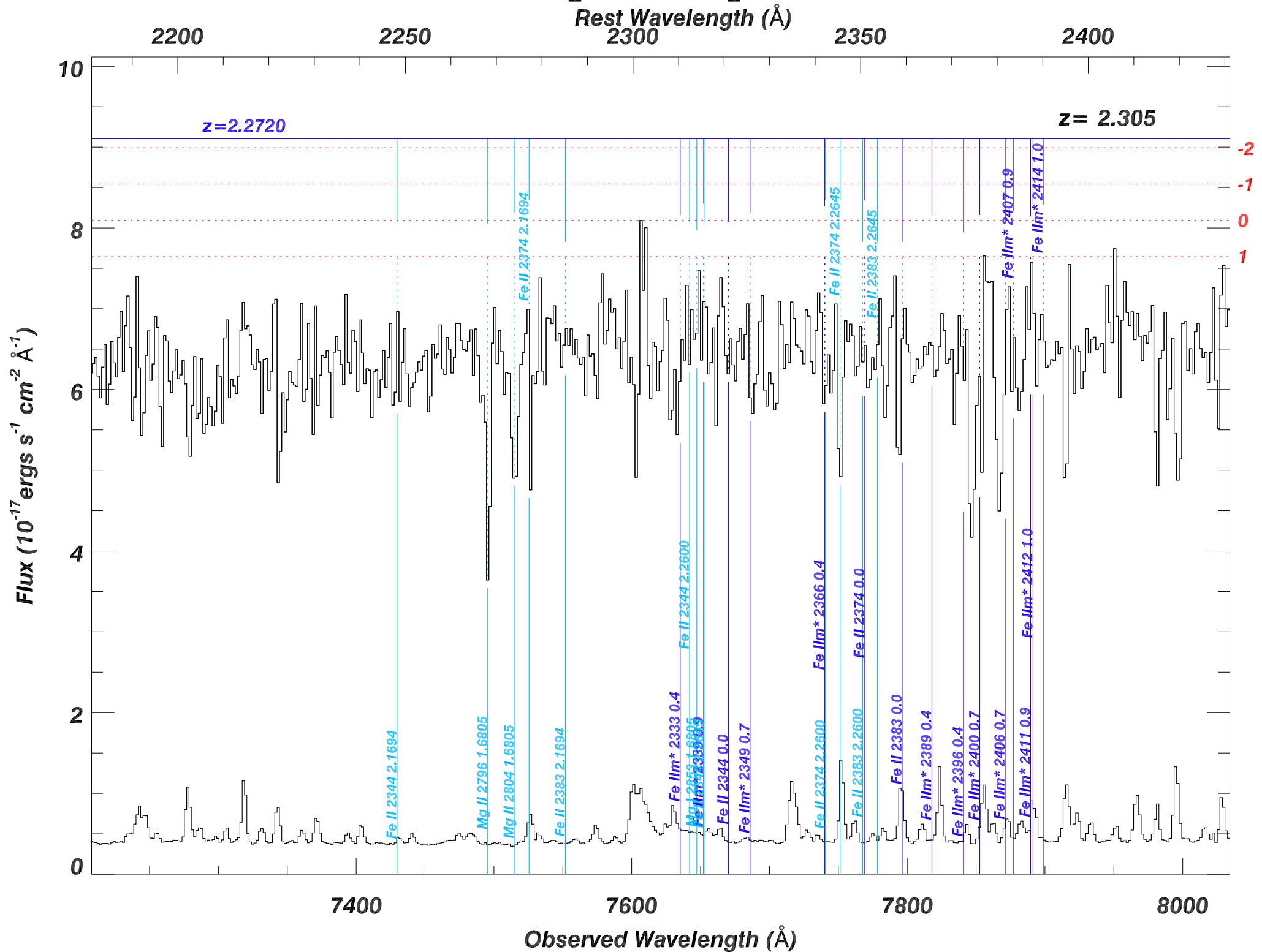
Observed Wavelength (\AA)

Fe II 2587 1.6805

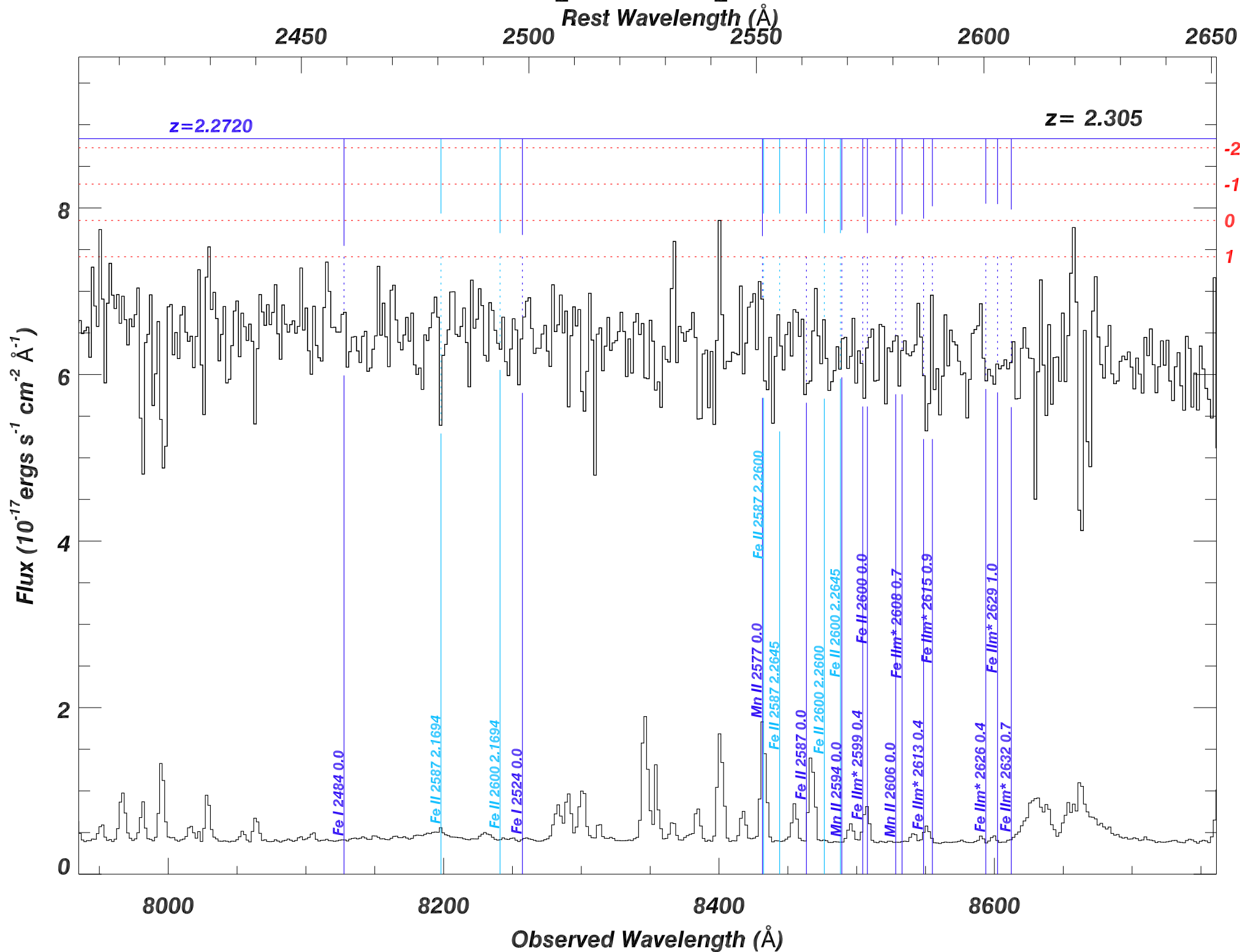
Fe II 2600 1.6805



SDSS_J1653+4635_MJD56452

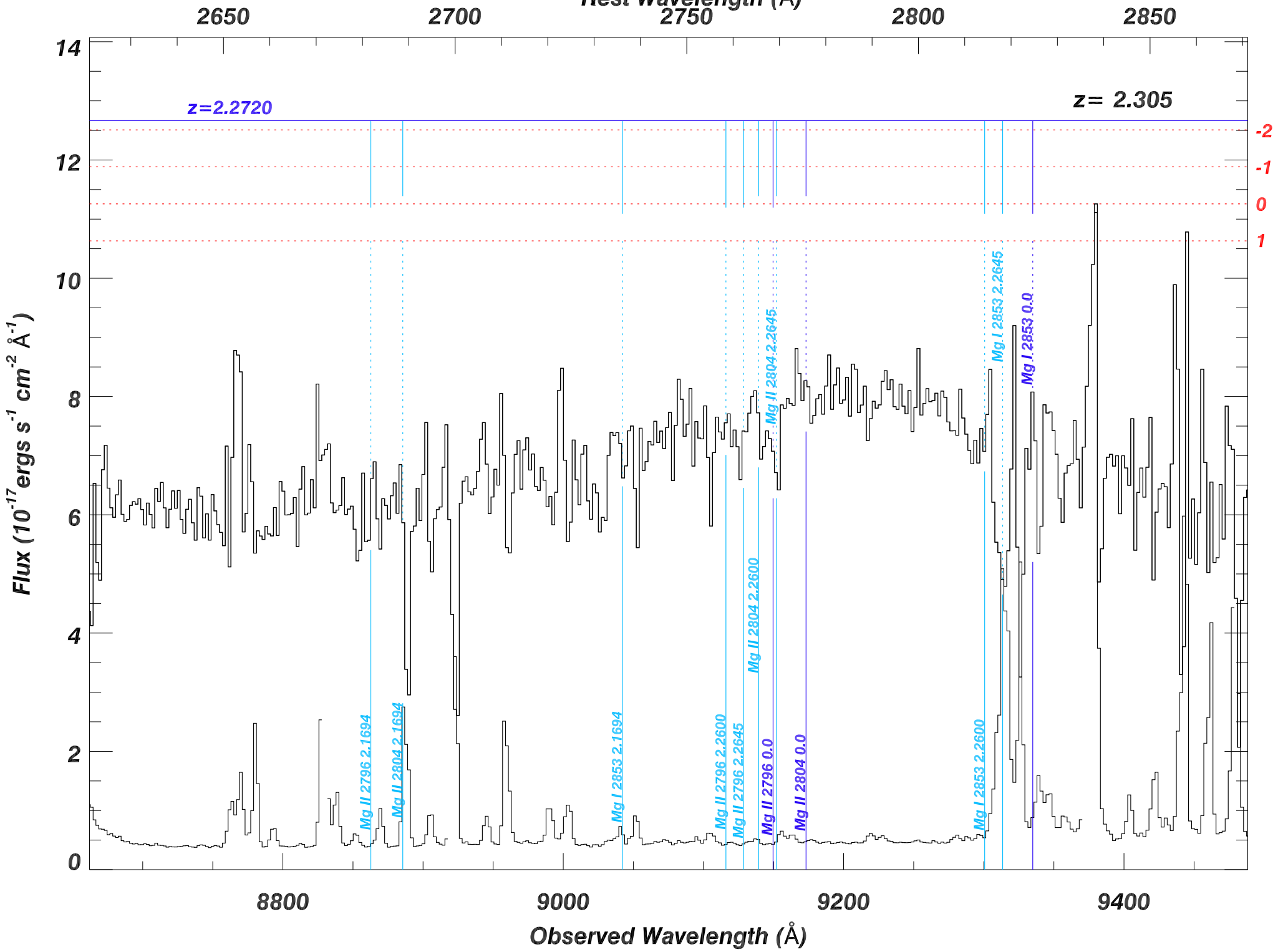


SDSS_J1653+4635_MJD56452

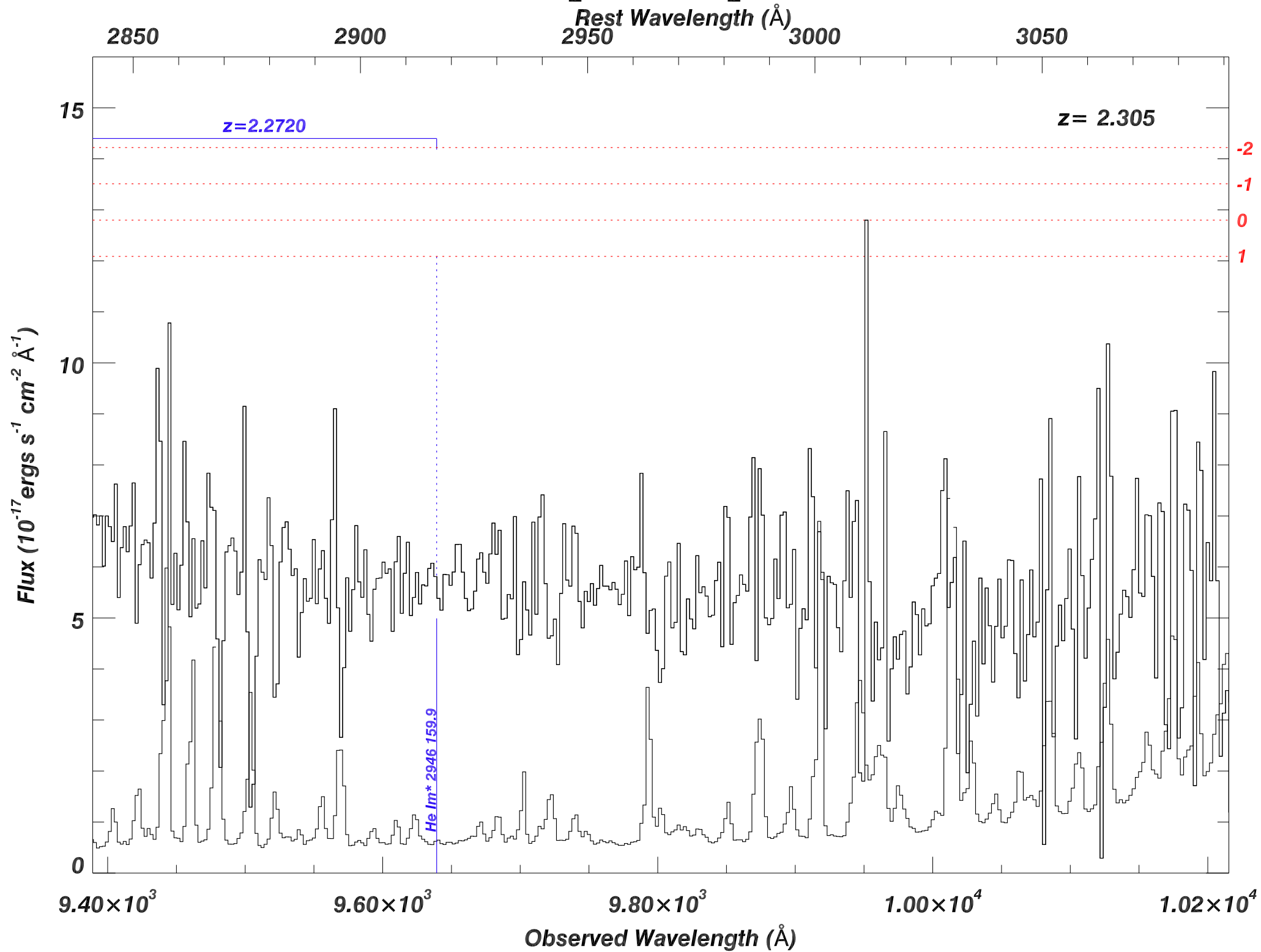


SDSS_J1653+4635_MJD56452

Rest Wavelength (\AA)



SDSS_J1653+4635_MJD56452



SDSS_J1653+4635_MJD56452

Rest Wavelength (Å)

3100

3200

3300

3400

z = 2.305

