

SDSS_J2229+2427_MJD56478

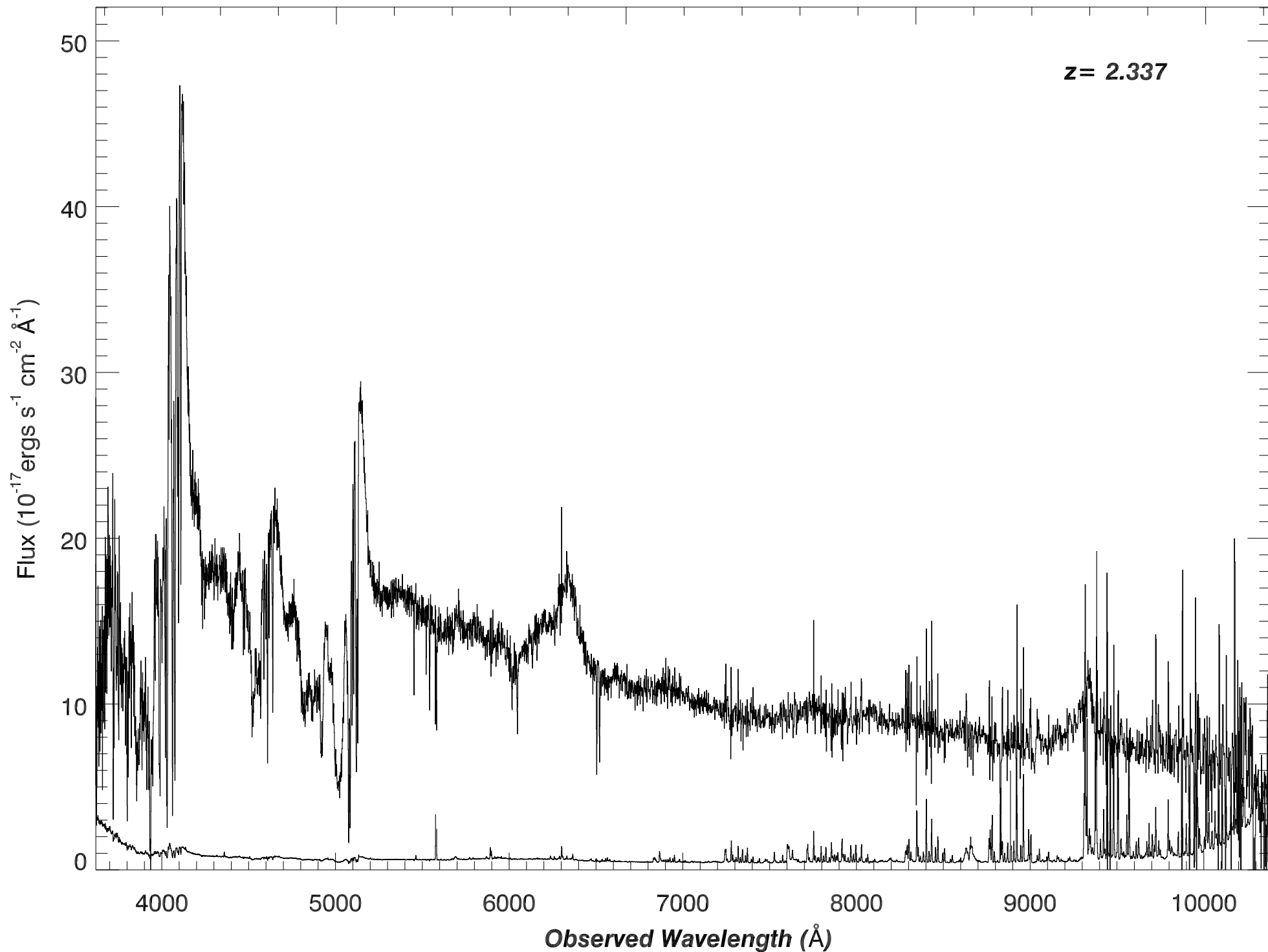
Rest Wavelength (\AA)

1500

2000

2500

3000



SDSS_J2229+2427_MJD56478

Rest Wavelength (Å)

1100

1150

1200

1250

1300

Flux (10^{-17} ergs s^{-1} cm^{-2} \AA^{-1})

50
40
30
20
10
0

$z=2.2428$

$z=2.337$

-2
-1
0
1

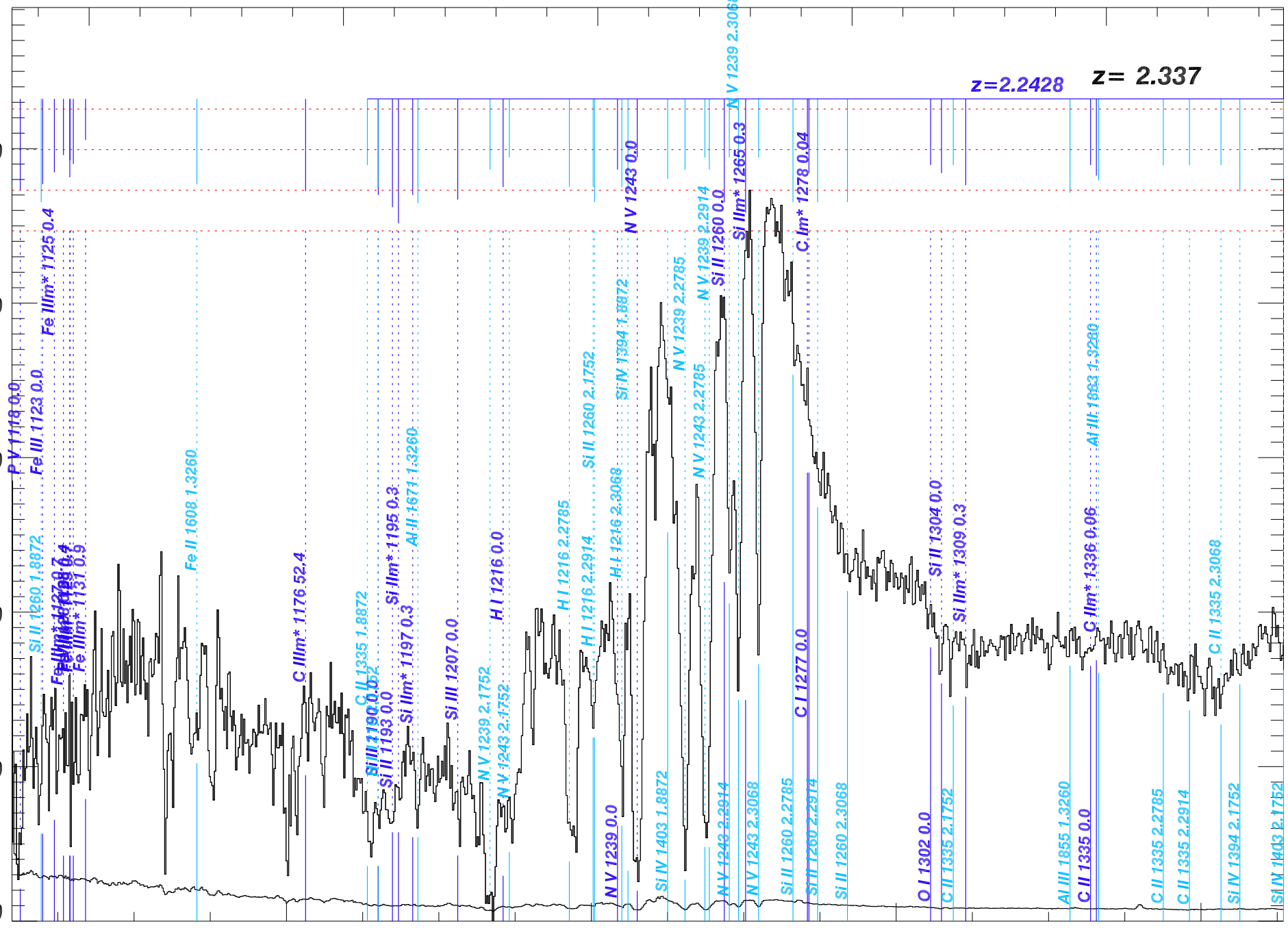
3800

4000

4200

4400

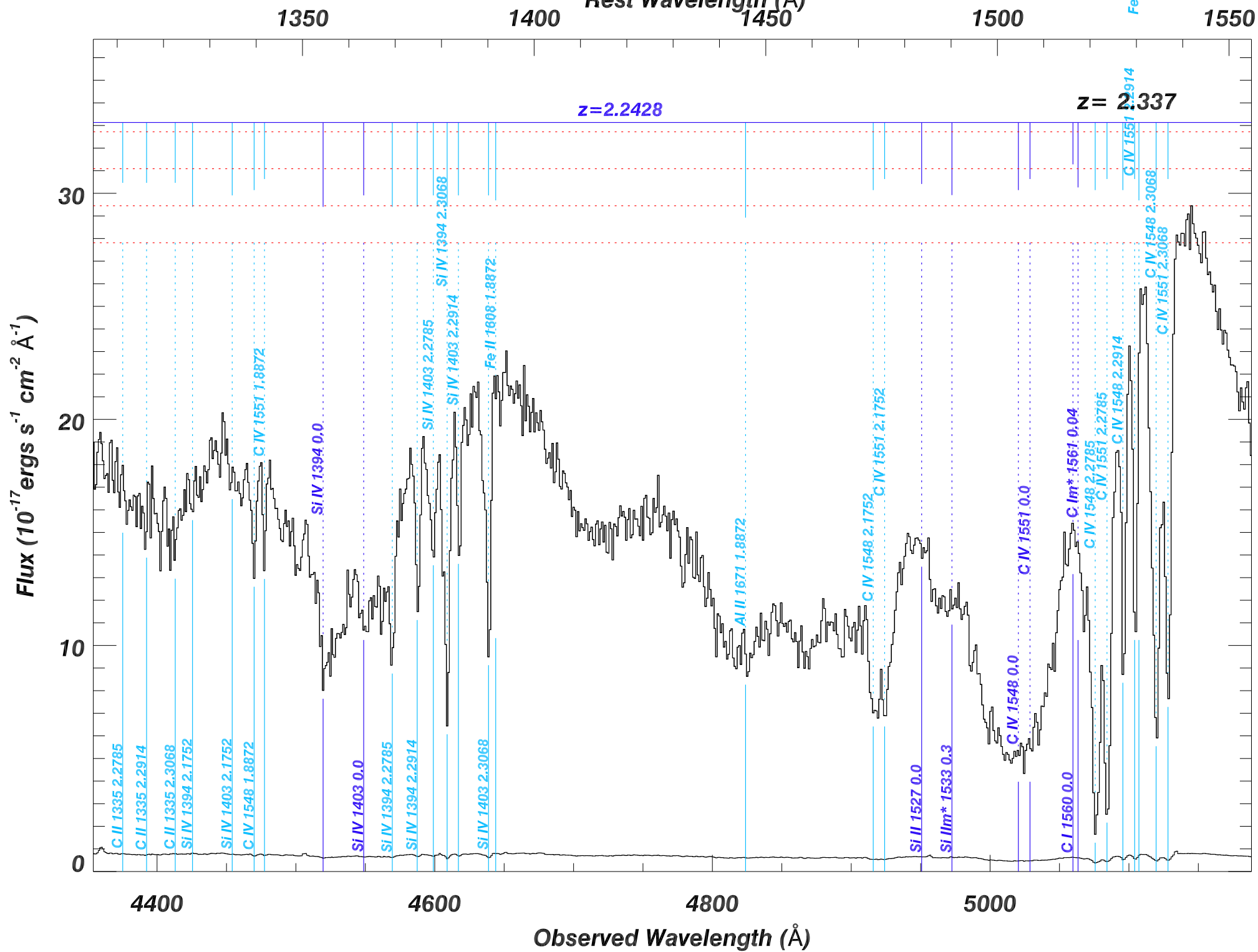
Observed Wavelength (Å)



- P V 1118 0.0
- Si II 1260 1.8872
- Fe III 1123 0.0
- Fe III m* 1125 0.4
- Fe III m* 1127 0.4
- Fe III m* 1131 0.9
- Fe II 1608 1.3260
- C III m* 1176 52.4
- Si III 1190 0.0
- Si III 1193 0.0
- Si III m* 1195 0.3
- Si III m* 1197 0.3
- Al II 1671 1.3260
- Si III 1207 0.0
- N V 1239 2.1752
- N V 1243 2.1752
- H I 1216 0.0
- H I 1216 2.2785
- H I 1216 2.2914
- Si II 1260 2.1752
- N V 1239 2.3068
- H I 1216 2.3068
- Si IV 1403 1.8872
- N V 1243 2.2785
- N V 1243 2.2914
- N V 1243 2.2914
- N V 1243 2.3068
- Si III 1260 2.2785
- Si III 1260 2.2914
- Si II 1260 2.3068
- C I 1277 0.0
- O I 1302 0.0
- C II 1335 2.1752
- Si II 1309 0.3
- Si II 1304 0.0
- Al III 1855 1.3260
- C II 1335 0.0
- Al III 1853 1.3260
- C II 1335 2.2785
- C II 1335 2.2914
- C II 1335 2.3068
- Si IV 1394 2.1752
- Si IV 1403 2.1752
- N V 1239 2.3068
- Si III m* 1265 0.3
- N V 1243 0.0
- Si III m* 1278 0.04
- C III m* 1336 0.06
- Al III 1853 1.3260
- C II 1335 2.3068
- Si IV 1394 2.1752
- Si IV 1403 2.1752

SDSS_J2229+2427_MJD56478

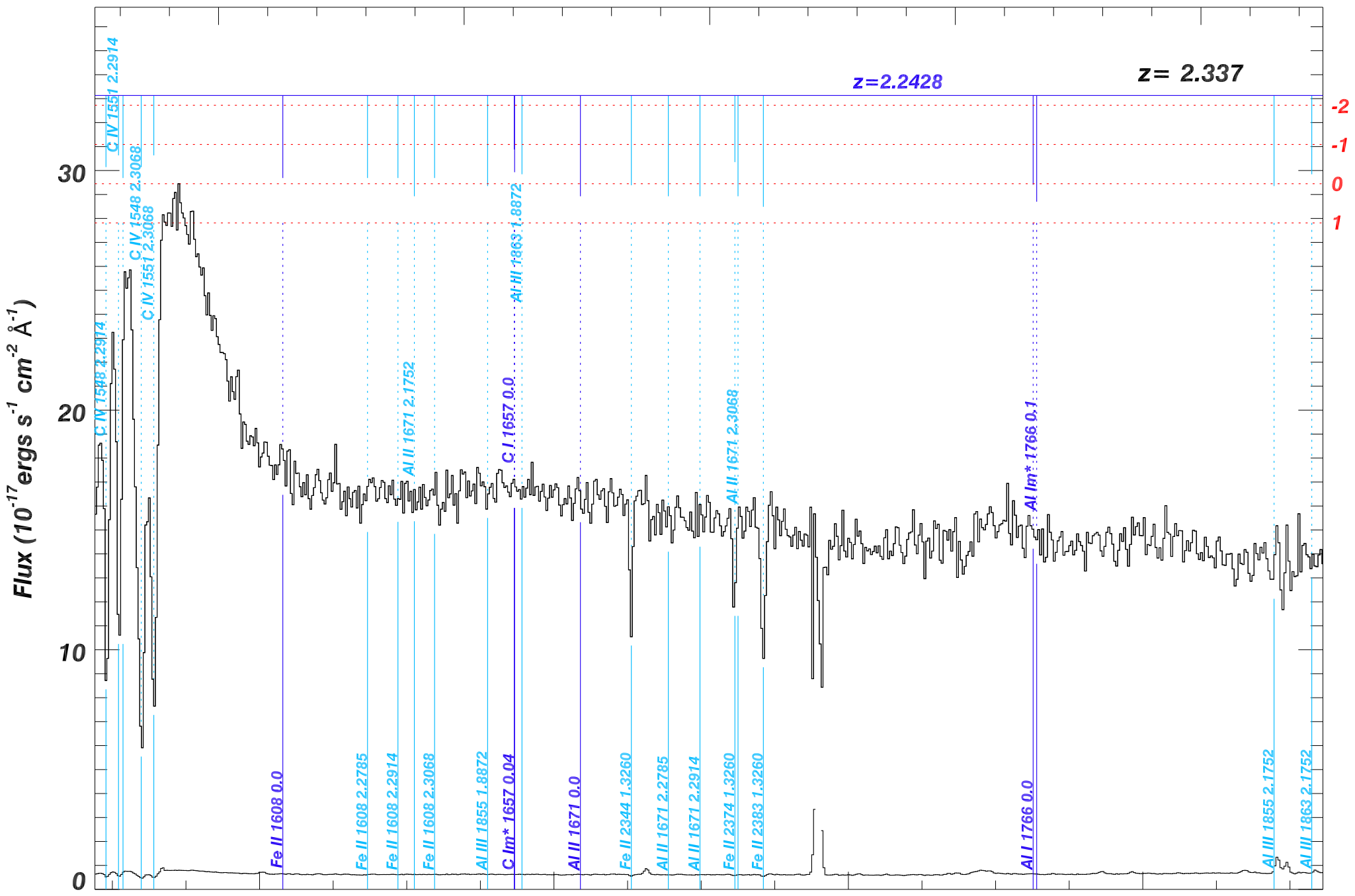
Rest Wavelength (\AA)



SDSS_J2229+2427_MJD56478

Rest Wavelength (\AA)

1550 1600 1650 1700 1750



5200

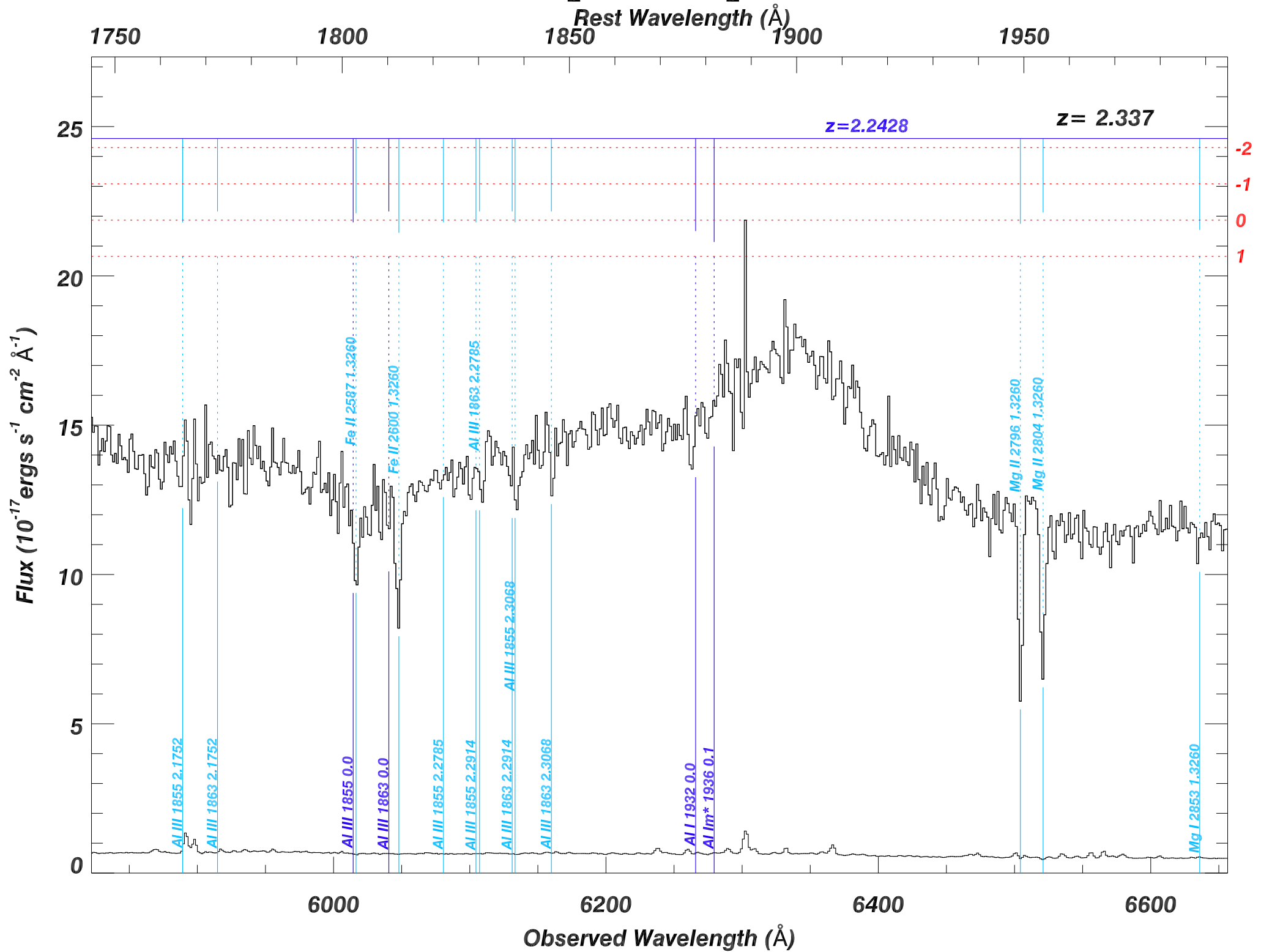
5400

5600

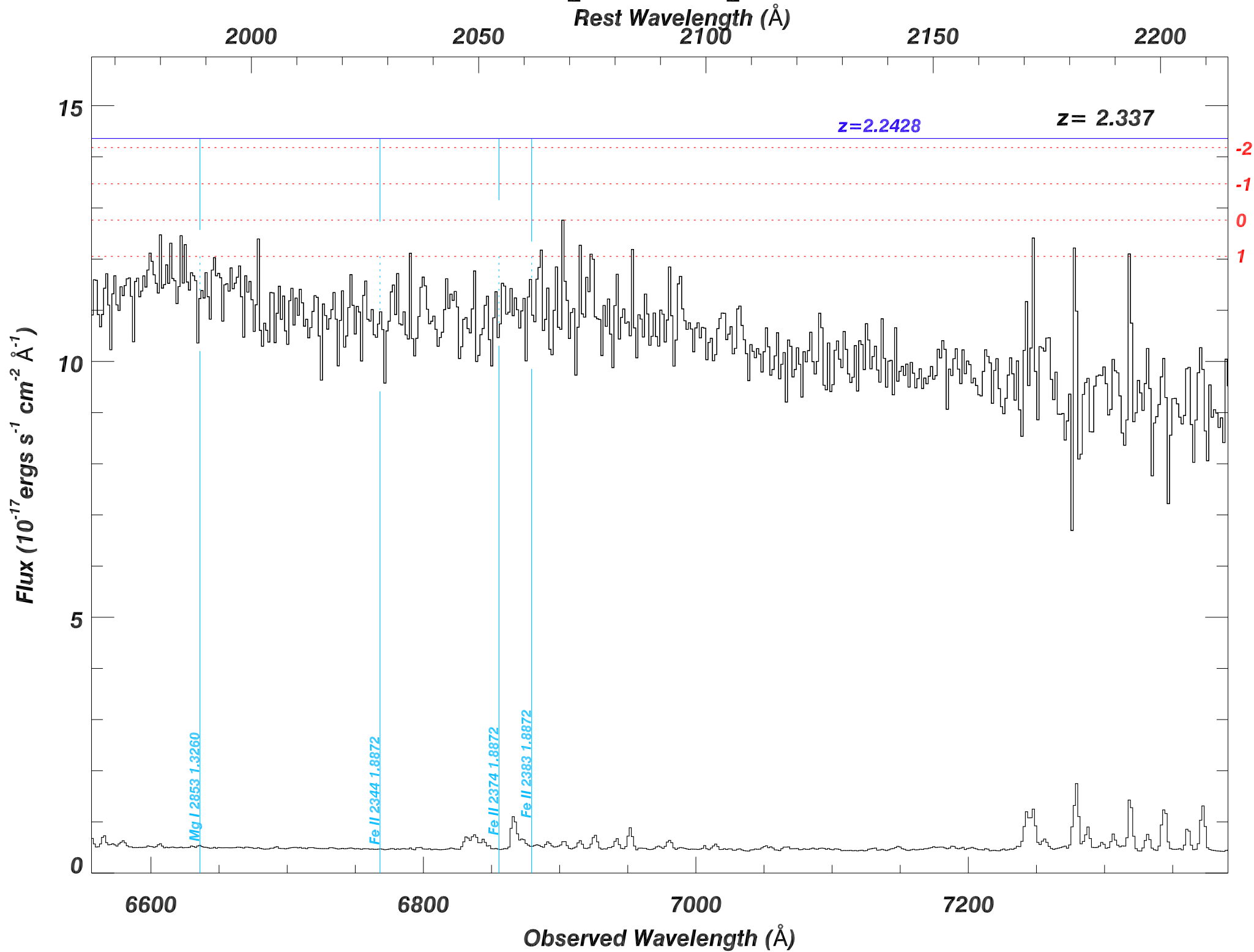
5800

Observed Wavelength (\AA)

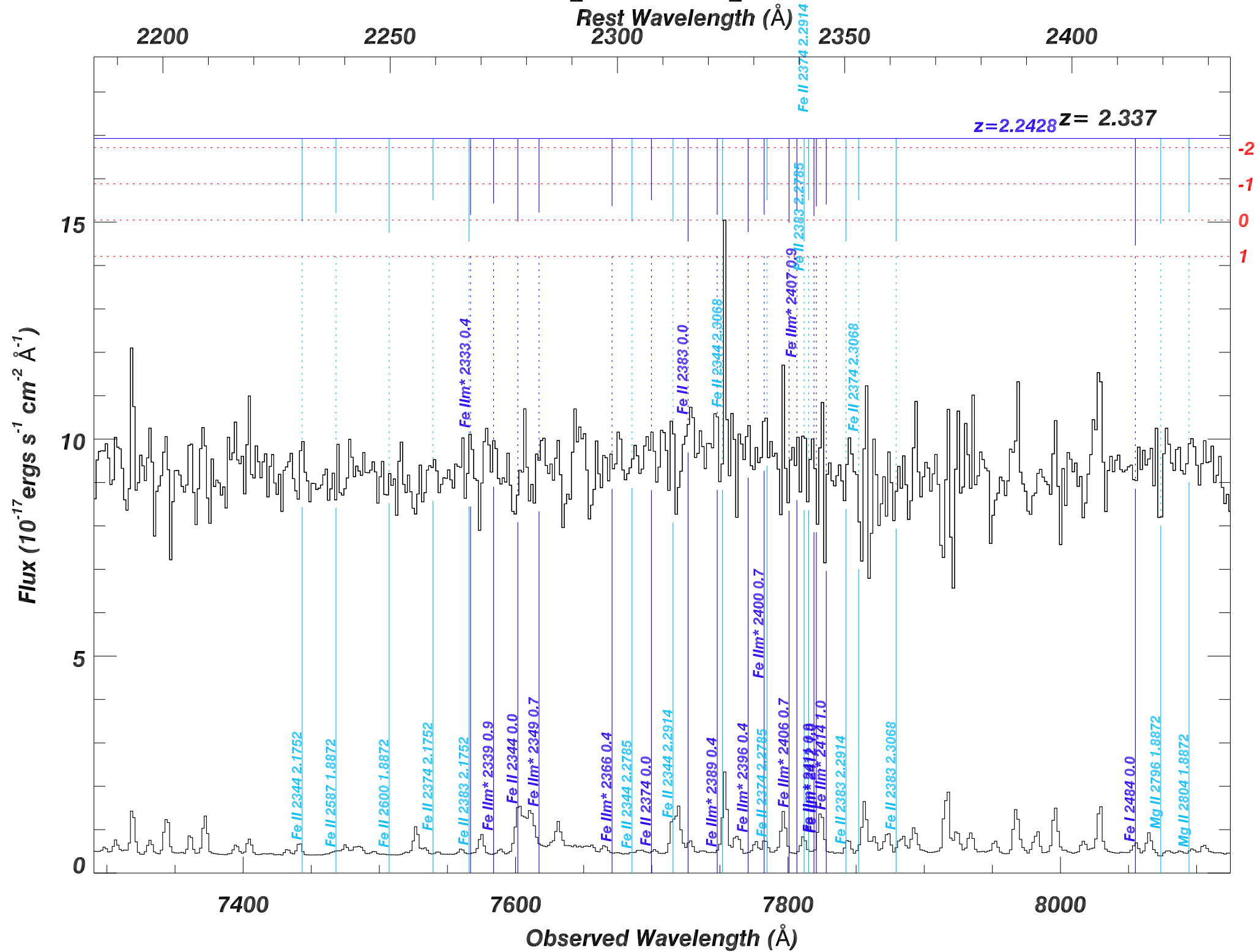
SDSS_J2229+2427_MJD56478



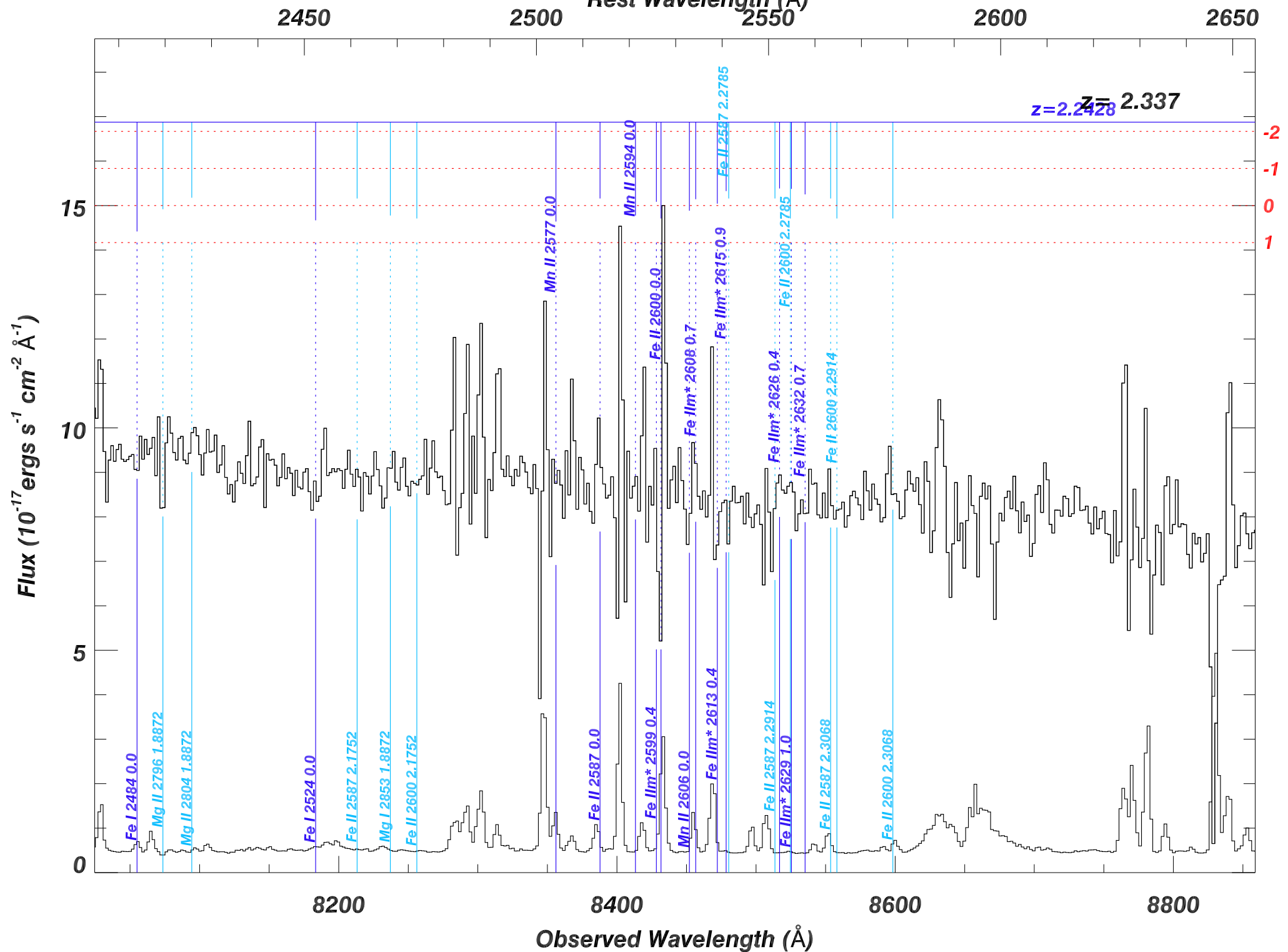
SDSS_J2229+2427_MJD56478



SDSS_J2229+2427_MJD56478



SDSS_J2229+2427_MJD56478

Rest Wavelength (\AA)

SDSS_J2229+2427_MJD56478

Rest Wavelength (\AA)

2650

2700

2750

2800

2850

$z=2.2428$

$z=2.337$

Flux ($10^{-17} \text{ ergs s}^{-1} \text{ cm}^{-2} \text{ \AA}^{-1}$)

20

15

10

5

0

-2

-1

0

1

8800

9000

9200

9400

Observed Wavelength (\AA)

Mg II 2796 2.1752

Mg II 2804 2.1752

Mg I 2853 2.1752

Mg II 2804 0.0

Ca II 3935 1.3260

Mg II 2796 2.2785

Mg II 2804 2.2785

Mg II 2796 2.2914

Mg II 2804 2.2914

Mg II 2796 2.3068

Mg II 2804 2.3068

Ca II 3970 1.3260

Mg I 2853 0.0

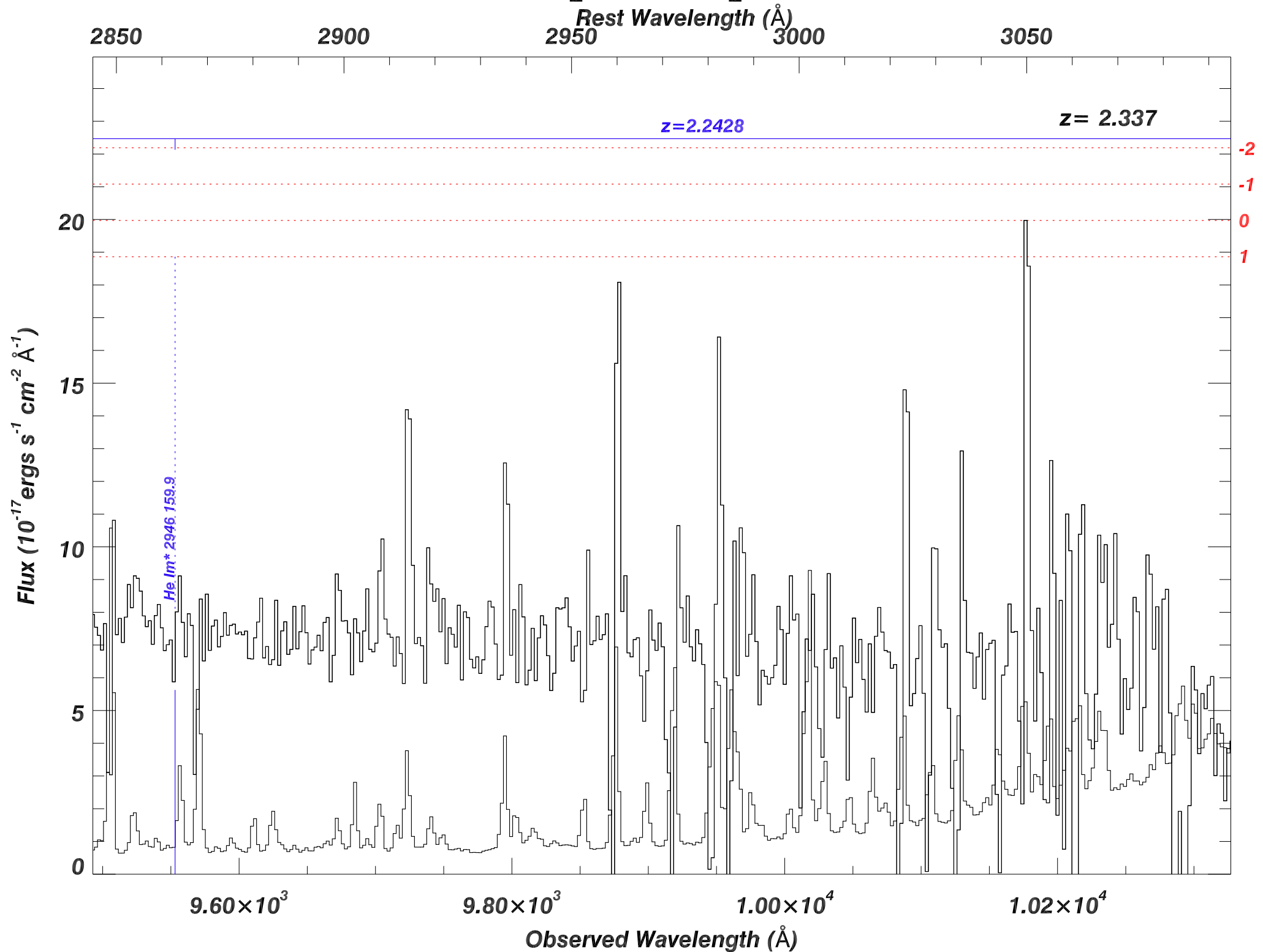
Mg I 2853 2.2785

Mg I 2853 2.2914

Mg I 2853 2.3068

He I m* 2946 159.9

SDSS_J2229+2427_MJD56478



SDSS_J2229+2427_MJD56478

Rest Wavelength (\AA)

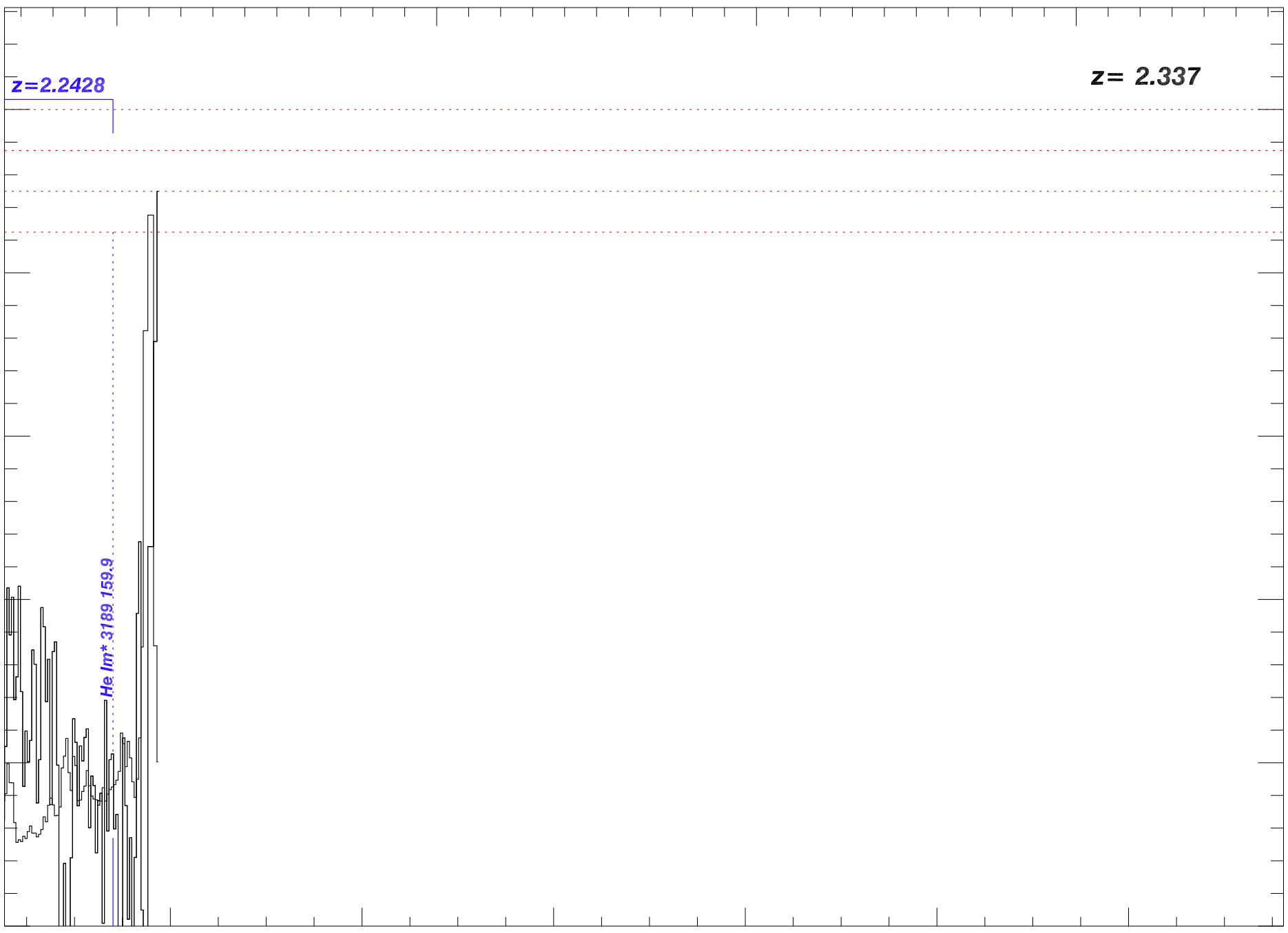
3100

3200

3300

3400

$z = 2.337$



Flux (10^{-17} ergs s^{-1} cm^{-2} \AA^{-1})

Observed Wavelength (\AA)

1.04×10^4

1.06×10^4

1.08×10^4

1.10×10^4

1.12×10^4

1.14×10^4

$z = 2.2428$

He I m* 3189.159.9

-2
-1
0
1