

SDSS_J0826+4254_MJD54524

Rest Wavelength (\AA)

2500

3000

3500

4000

4500

5000

$z = 0.7095$

Flux ($10^{-17} \text{ ergs s}^{-1} \text{ cm}^{-2} \text{ \AA}^{-1}$)

60

50

40

30

20

10

0

4000

5000

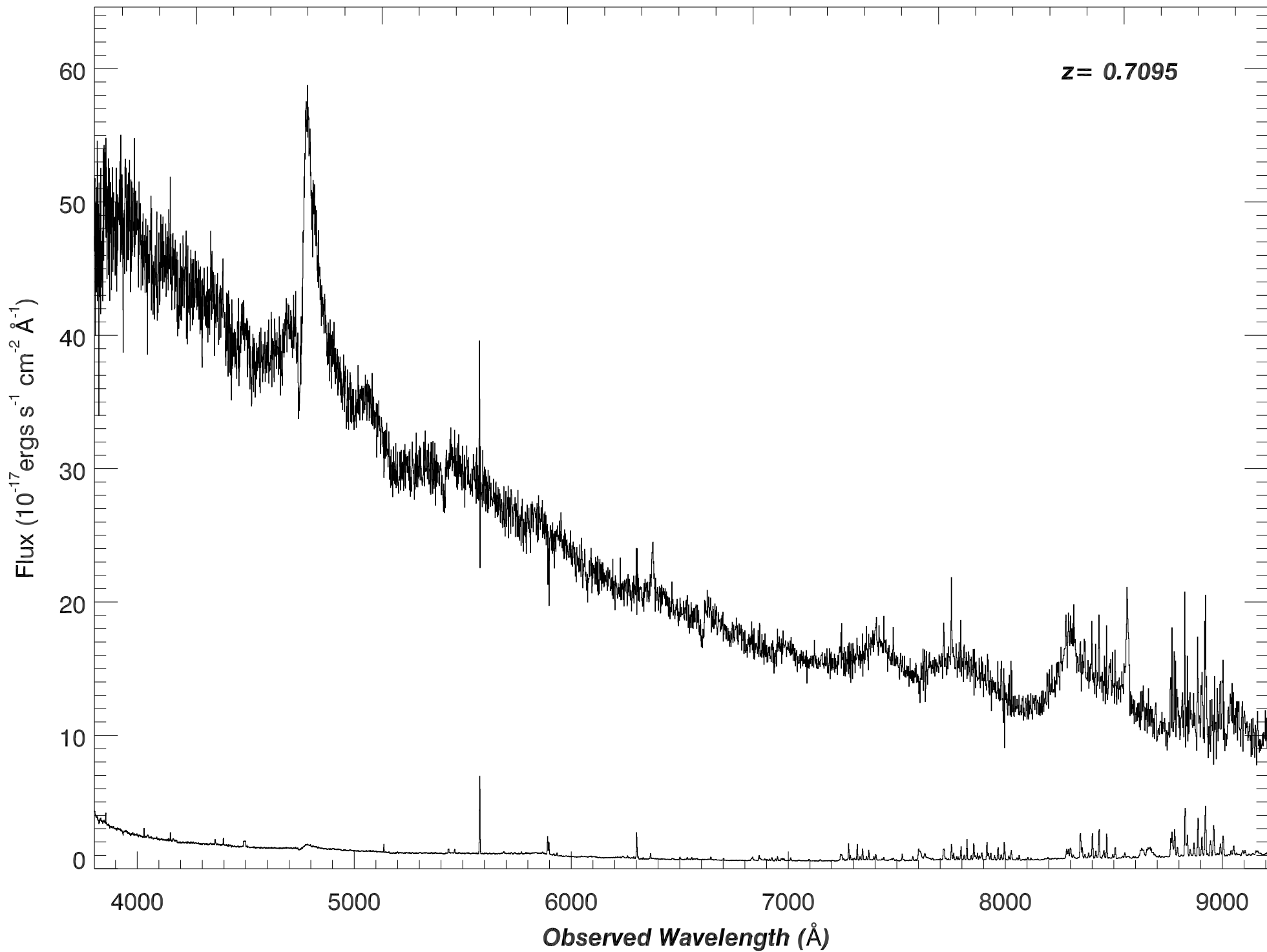
6000

7000

8000

9000

Observed Wavelength (\AA)



SDSS_J0826+4254_MJD54524

Rest Wavelength (\AA)

2250

2300

2350

2400

2450

Flux (10^{-17} ergs s^{-1} cm^{-2} \AA^{-1})

60
50
40
30
20
10
0

$z=0.6965$ $z=0.7095$

-2
-1
0
1

Fe III* 2333 0.4

Fe III* 2339 0.9

Fe II 2344 0.0

Fe III* 2349 0.7

Fe III* 2366 0.4

Fe II 2374 0.0

Fe II 2383 0.0

Fe III* 2389 0.4

Fe III* 2396 0.4

Fe III* 2400 0.7

Fe III* 2406 0.7

Fe III* 2411 0.9

Fe III* 2412 1.0

Fe III* 2414 1.0

Fe I 2484 0.0

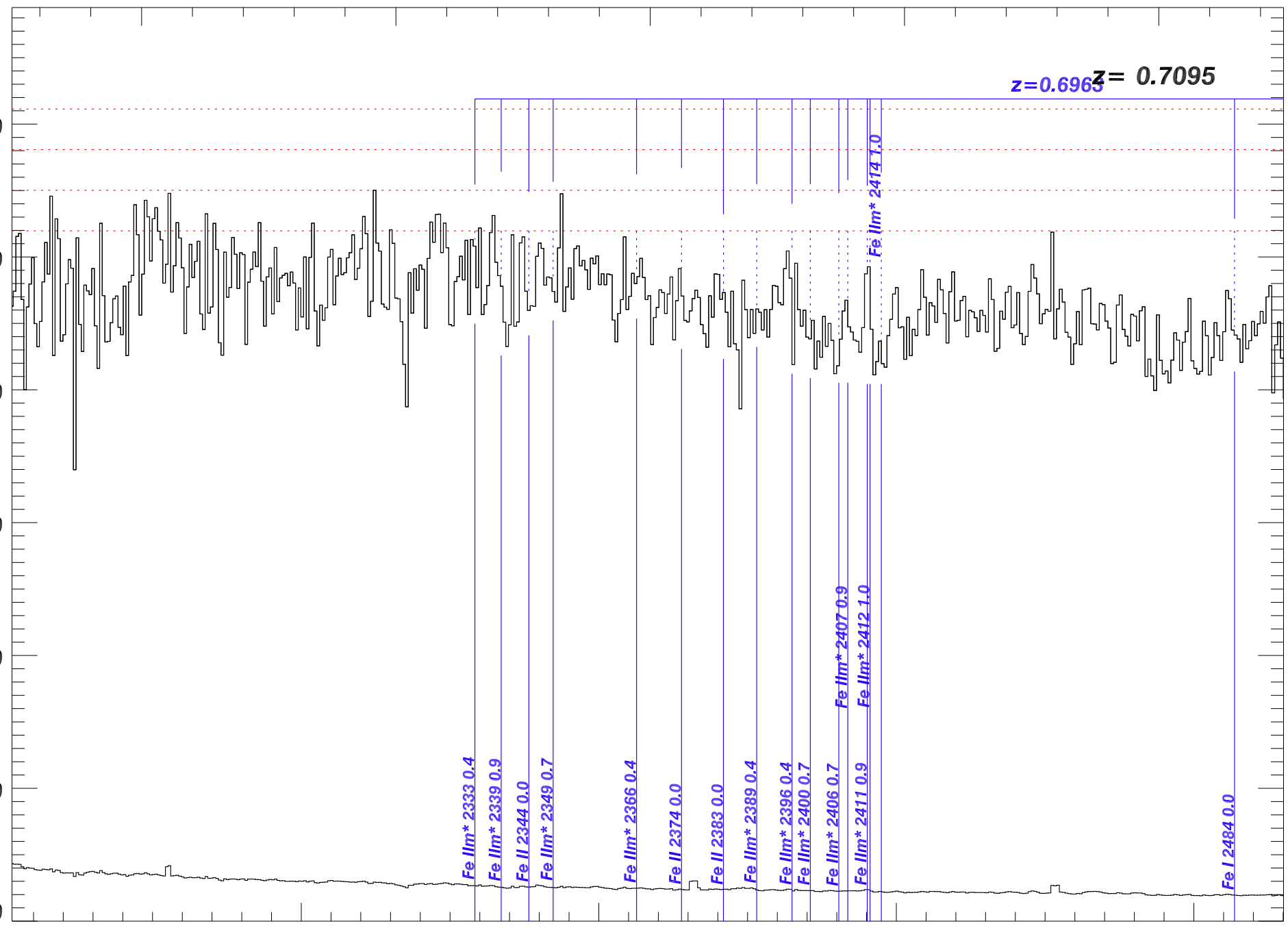
3900

4000

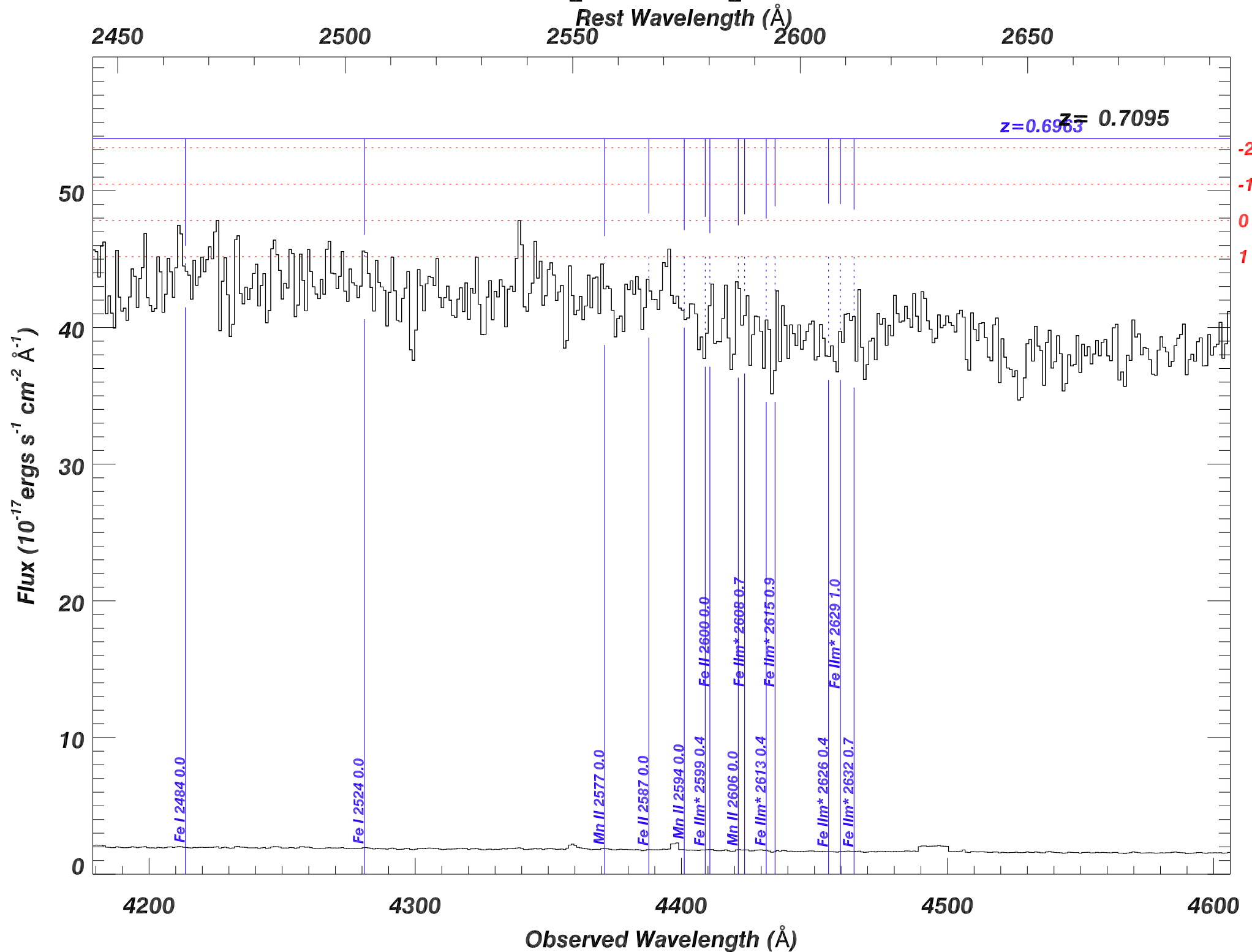
4100

4200

Observed Wavelength (\AA)



SDSS_J0826+4254_MJD54524



SDSS_J0826+4254_MJD54524

Rest Wavelength (\AA)

2700

2750

2800

2850

2900

$z=0.6963$

$z= 0.7095$

-2

-1

0

1

Flux ($10^{-17} \text{ ergs s}^{-1} \text{ cm}^{-2} \text{ \AA}^{-1}$)

60

40

20

0

4600

4700

4800

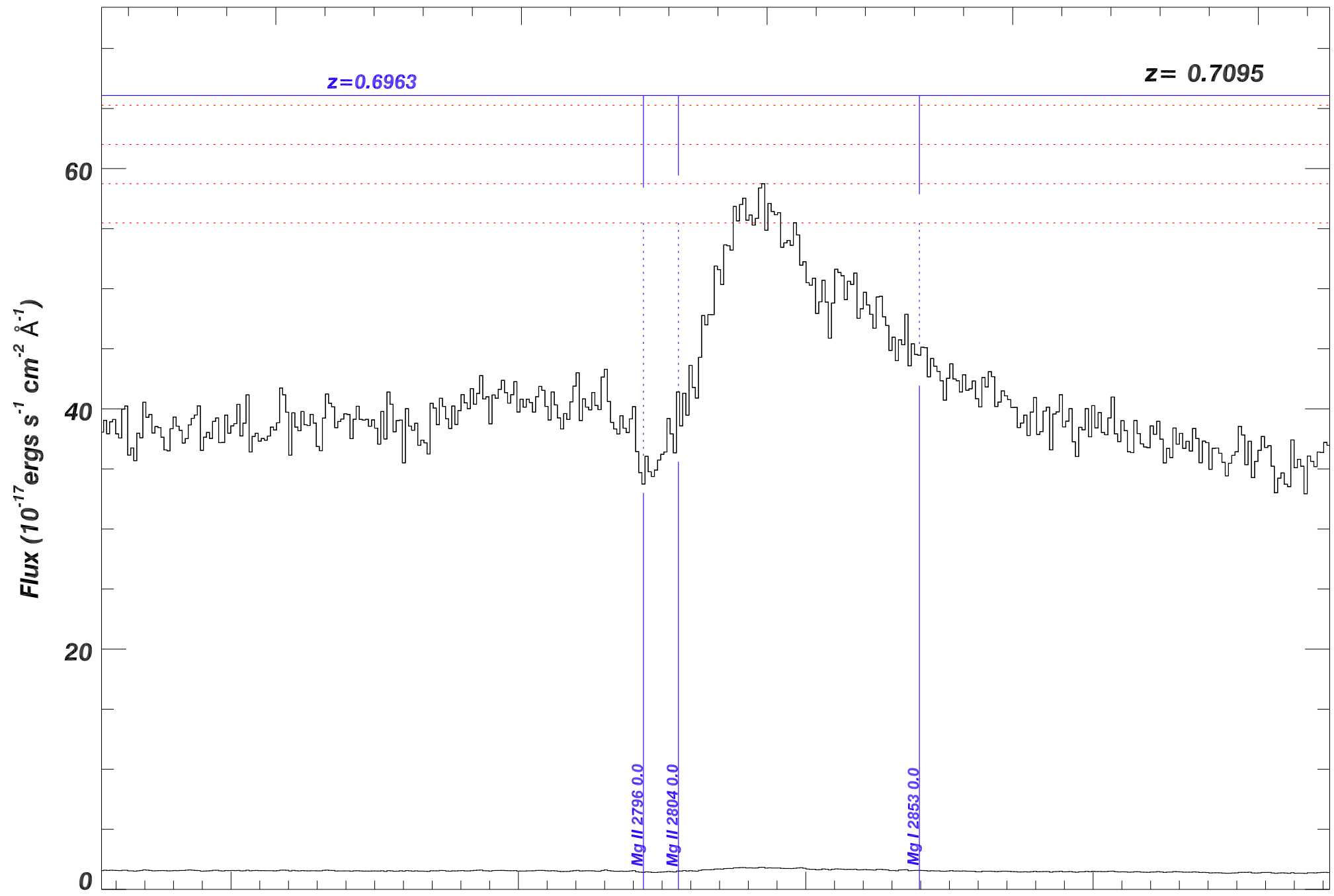
4900

Observed Wavelength (\AA)

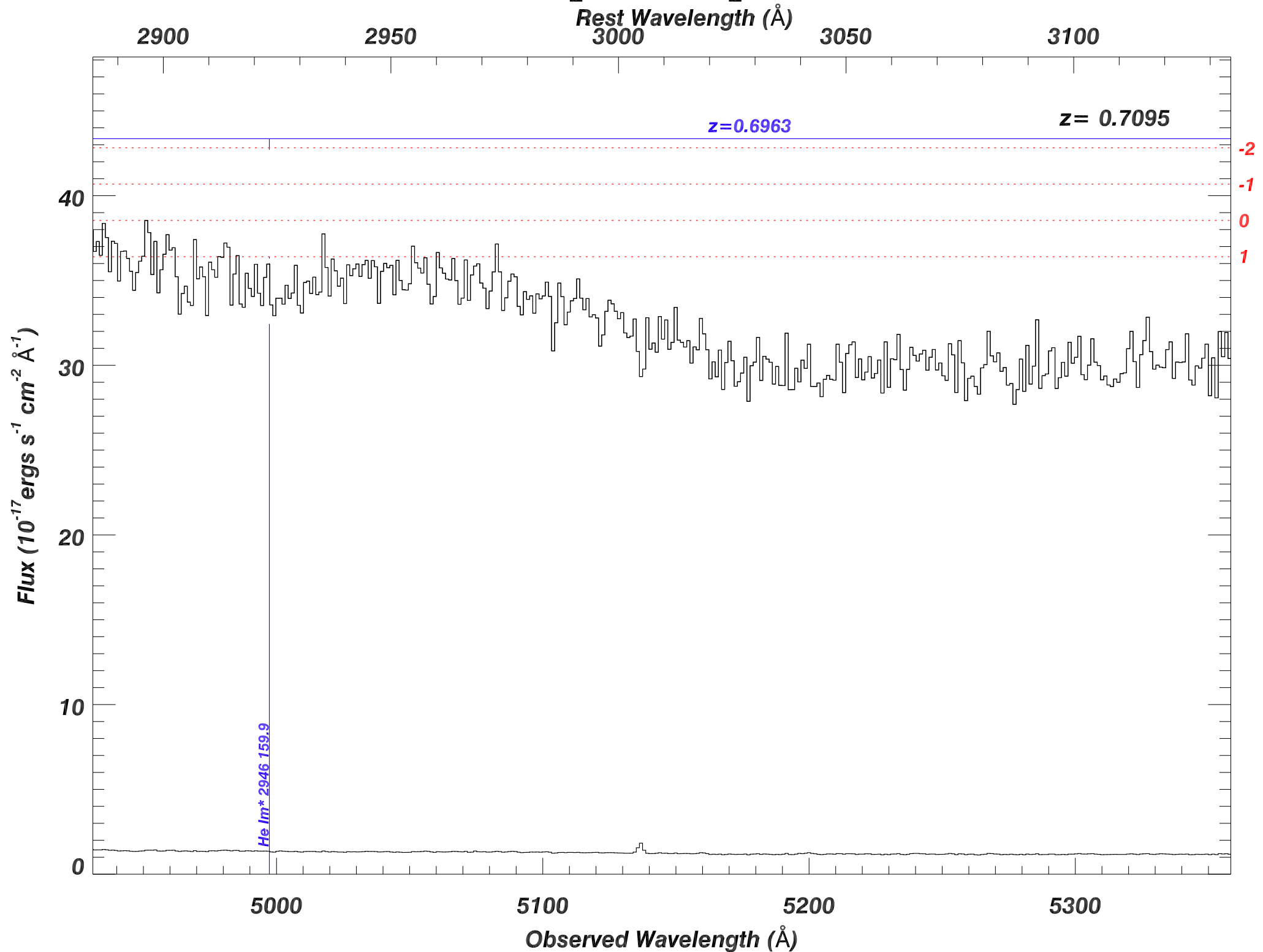
Mg II 2796 0.0

Mg II 2804 0.0

Mg I 2853 0.0



SDSS_J0826+4254_MJD54524



SDSS_J0826+4254_MJD54524

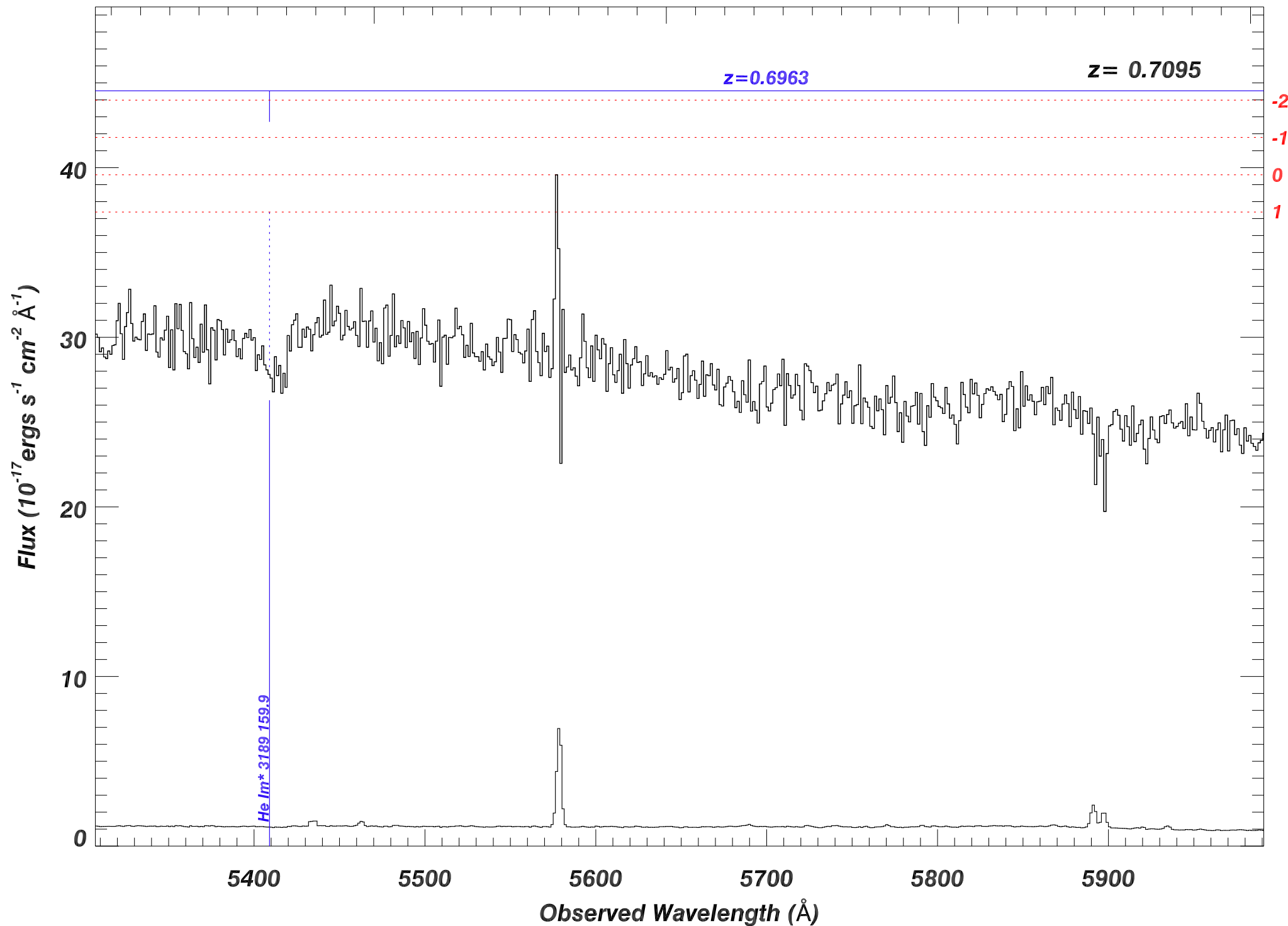
Rest Wavelength (\AA)

3200

3300

3400

3500



SDSS_J0826+4254_MJD54524

Rest Wavelength (\AA)

3500

3600

3700

3800

$z=0.6963$

$z=0.7095$

Flux ($10^{-17} \text{ ergs s}^{-1} \text{ cm}^{-2} \text{ \AA}^{-1}$)

30

25

20

15

10

5

0

-2

-1

0

1

He I m* 3890.159.9

6000

6100

6200

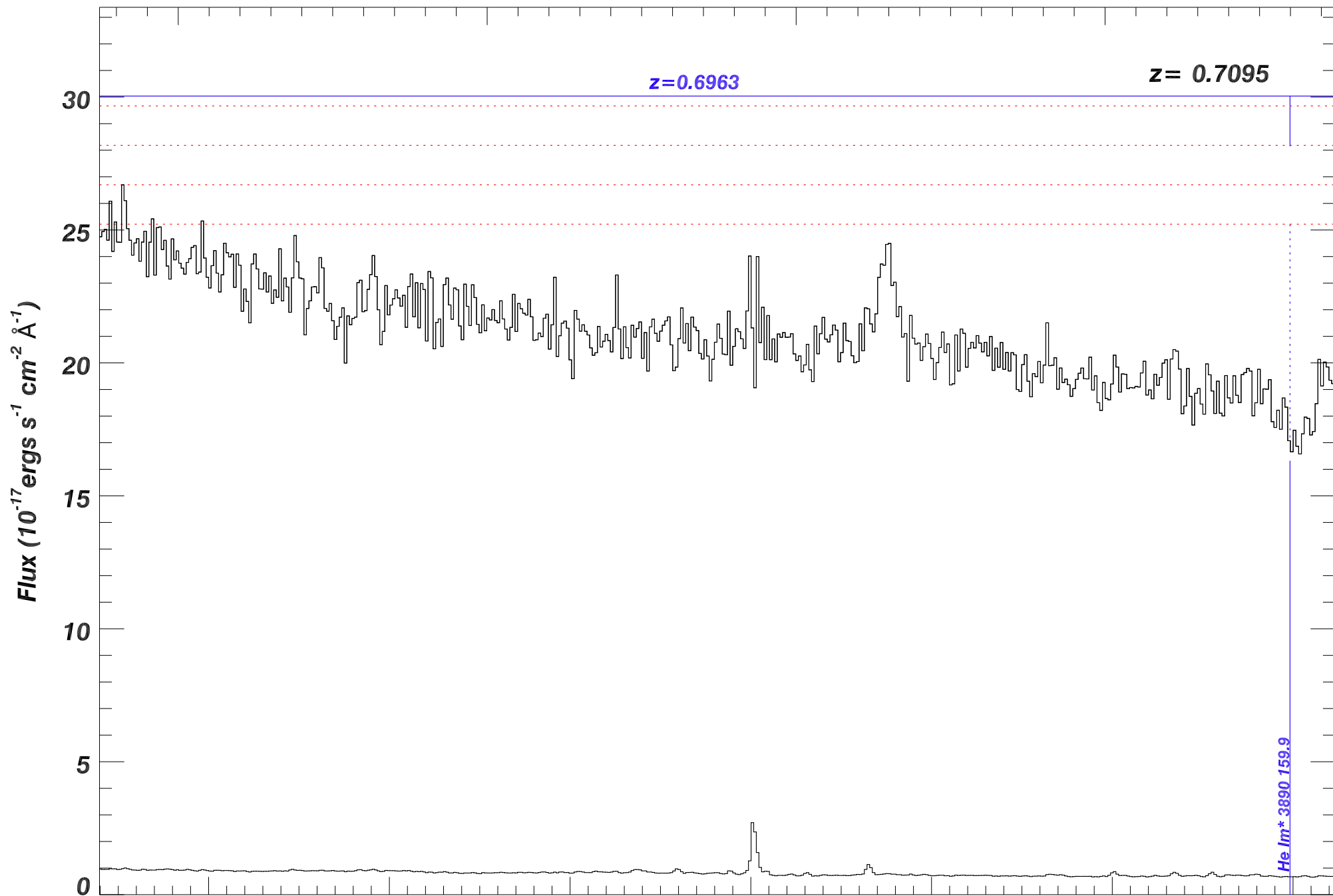
6300

6400

6500

6600

Observed Wavelength (\AA)



SDSS_J0826+4254_MJD54524

Rest Wavelength (\AA)

3900

4000

4100

4200

$z=0.6963$

$z=0.7095$

-2
-1
0
1

Flux (10^{-17} ergs s^{-1} cm^{-2} \AA^{-1})

25

20

15

10

5

0

6600

6700

6800

6900

7000

7100

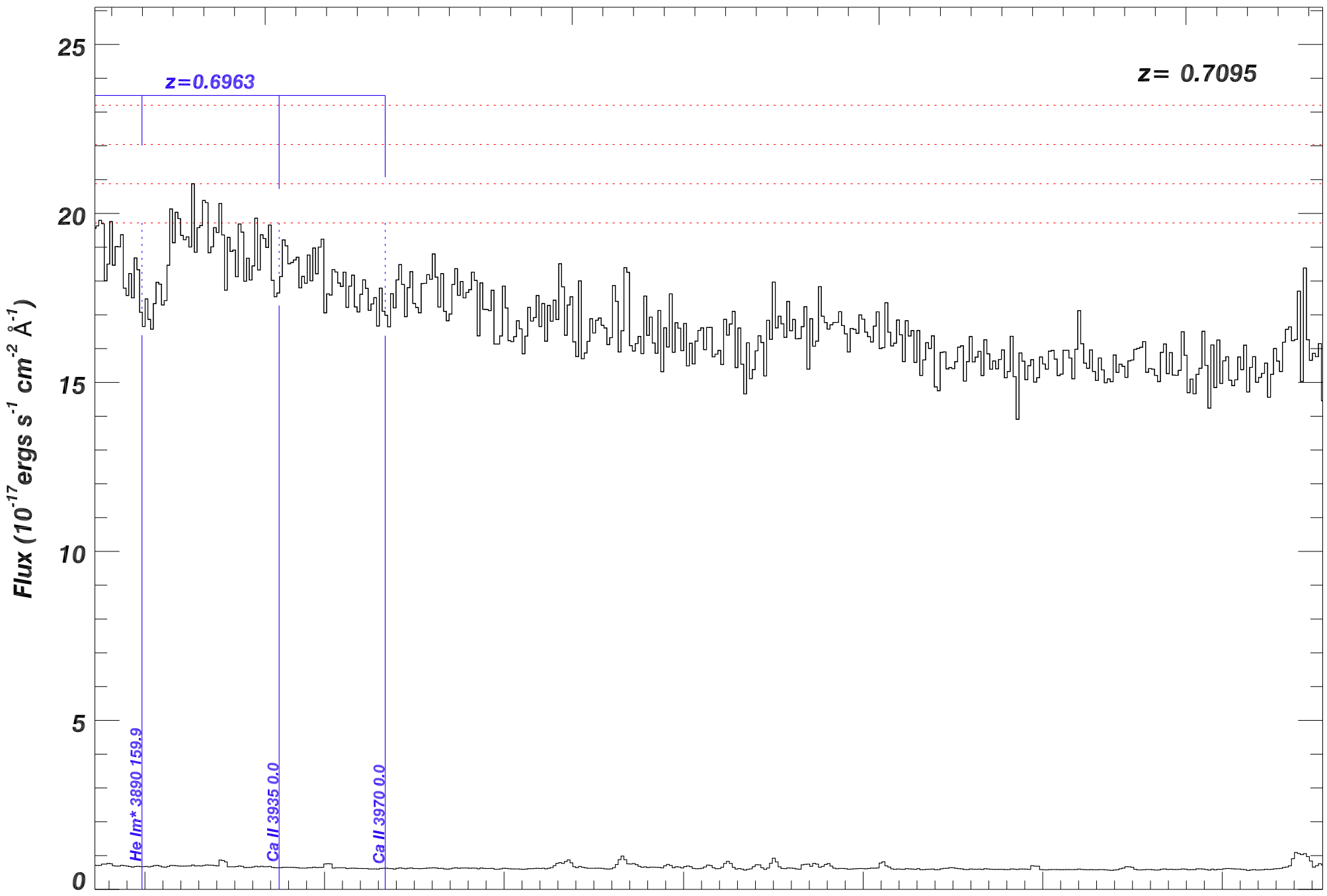
7200

Observed Wavelength (\AA)

He I m* 3890 159.9

Ca II 3935 0.0

Ca II 3970 0.0



SDSS_J0826+4254_MJD54524

Rest Wavelength (\AA)

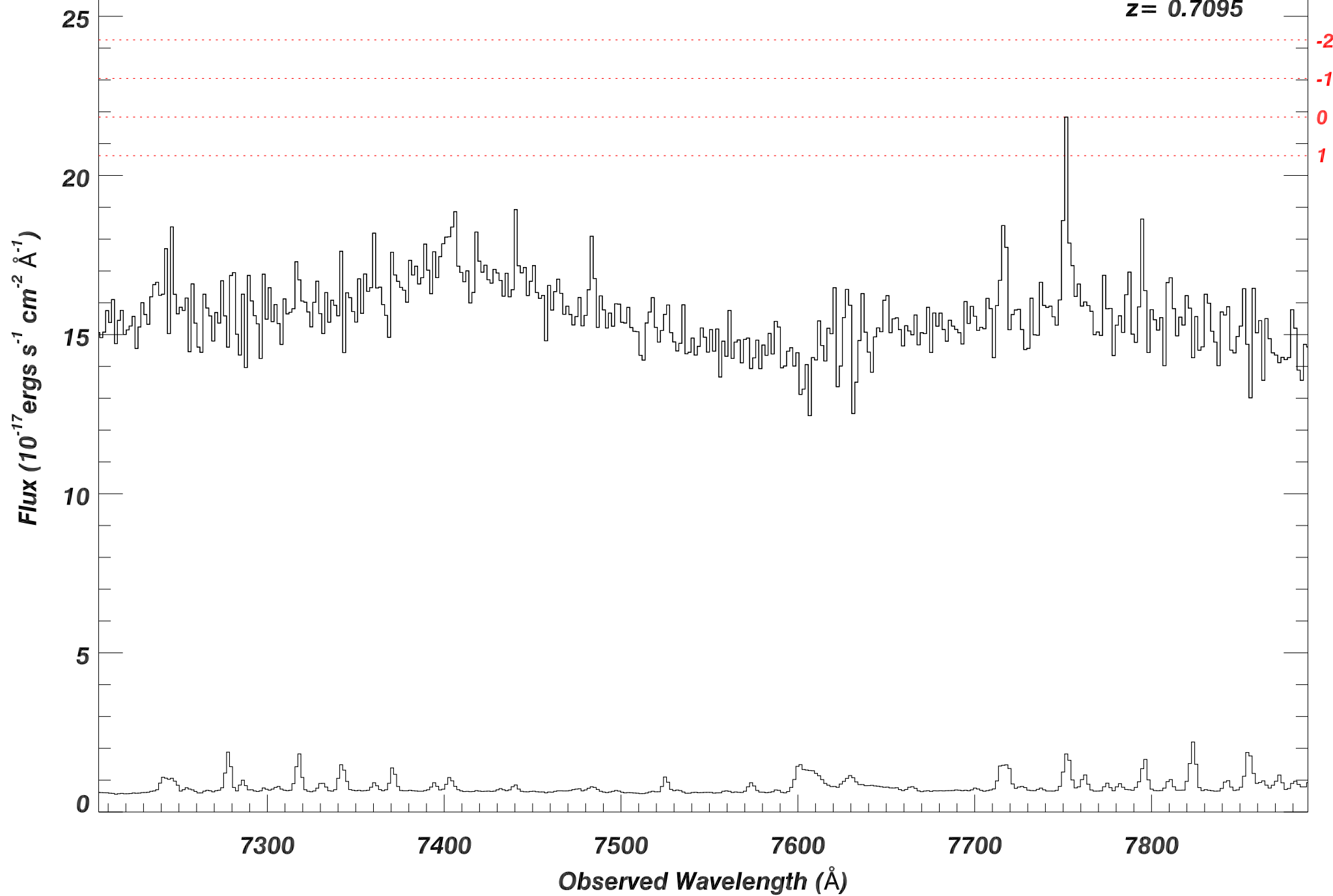
4300

4400

4500

4600

$z = 0.7095$



SDSS_J0826+4254_MJD54524

Rest Wavelength (\AA)

4600

4700

4800

4900

$z = 0.7095$

Flux ($10^{-17} \text{ ergs s}^{-1} \text{ cm}^{-2} \text{ \AA}^{-1}$)

20

15

10

5

0

-2

-1

0

1

7900

8000

8100

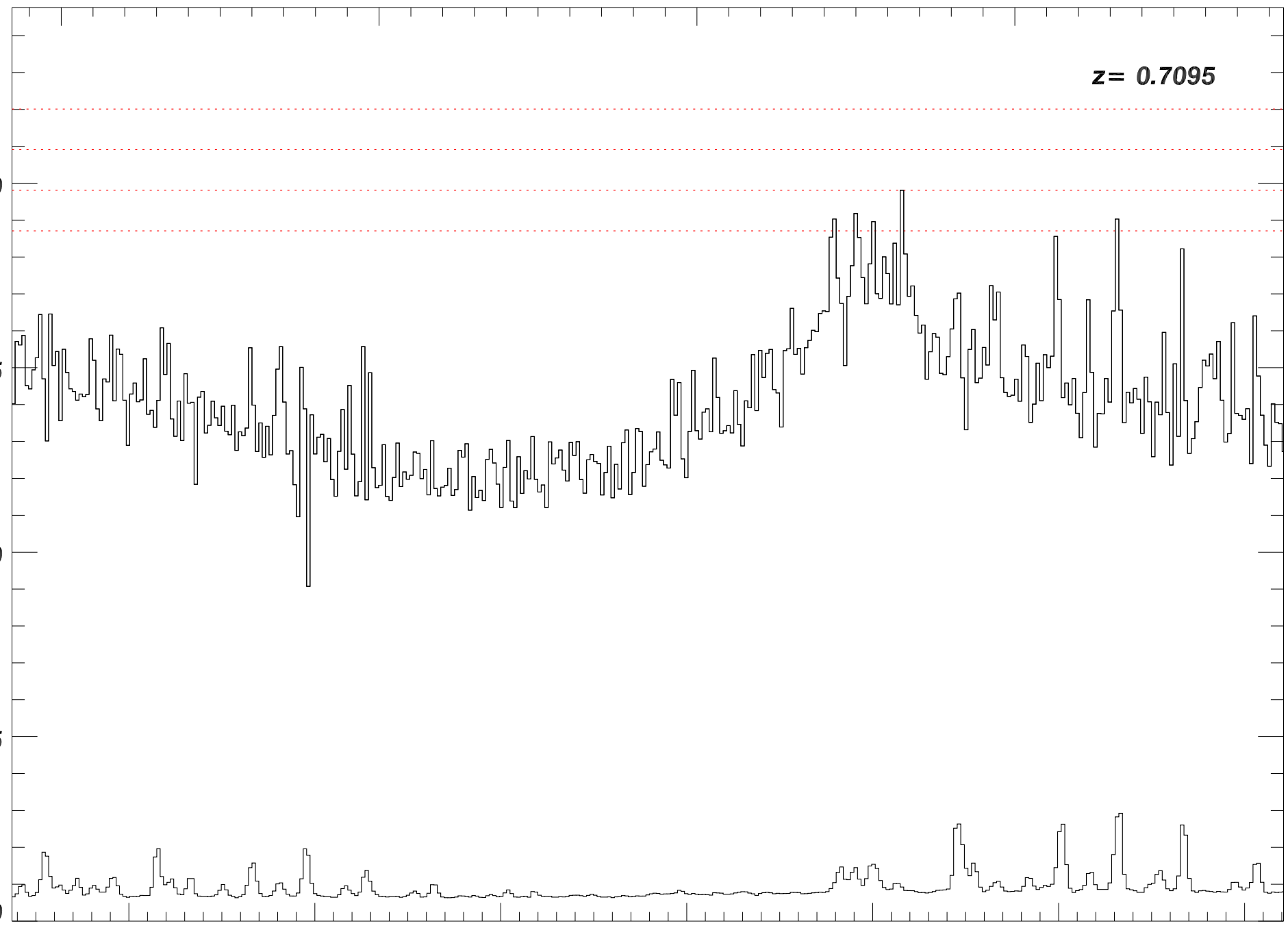
8200

8300

8400

8500

Observed Wavelength (\AA)



SDSS_J0826+4254_MJD54524

Rest Wavelength (Å)

5000

5100

5200

5300

$z = 0.7095$

Flux (10^{-17} ergs s^{-1} cm^{-2} \AA^{-1})

25

20

15

10

5

0

-2

-1

0

1

8600

8800

9000

9200

Observed Wavelength (Å)

